

Belvin Angus

14TH
ANNUAL



MARCH 3, 2026 AT THE FARM, INNISFAIL, ALBERTA

BULL SALE

B A

tuesday
march 3


WELCOME TO OUR 14TH ANNUAL BULL SALE



Welcome to the 2026 Belvin Angus Bull Sale. What a year it has been! Chances are, if you've sold cattle since I wrote this letter last year, you sold them for more money than you ever have before. It's so rewarding to see everyone in the cattle industry be rewarded for years and years of hard work and resilience. Ranchers being ranchers, we are always conditioned to expect the worst, waiting for "reality" to hit and the market to crash back to earth. Politics, weather, trade, (anything) aside, there is still a shortage of cattle on this continent, and in so many other beef producing countries around the world. Even with monstrous carcass weights being harvested in North America, supply and demand suggest that until there is an increase in the cowherd and more calves enter the market, prices should remain strong. The worry always exists that retail beef prices will price beef out of the market for many consumers and decrease demand. While we were hosting a Certified Angus Beef event this summer, a good point was re-enforced with regards to this, and how prices have gone up, but beef consumption has stayed strong. Beef is the most appetizing and desirable protein source there is, consumers may complain as prices rise, but they are generally willing to pay for beef, because the quality and the taste and the eating experience is worth it to them. We are all part of raising the best protein source in the world.

It's hard to believe, but this year marks our 14th Bull Sale held on the farm, and 47 years since Gavin and Mabel started into the purebred Angus business. In October of 2025 Gavin and Mabel celebrated their 50th Wedding Anniversary, congratulations to them.

We are extremely excited for the bulls we have on offer. With our ever-expanding cowherd, we are offering more bulls this year than ever before, but we feel the quality and consistency is the best we have ever offered. I say it every year, and at the risk of being repetitive and trite, the point still rings true: the commercial cattle industry is based on consistency, uniformity and quality. A rancher doesn't get paid based on their best calf, they get paid on the strength and uniformity of the group. We strive to produce a consistent set of bulls, backed by a working cowherd of functional, efficient, real-world cows. We utilize embryo transfer to get embryos from our best females, but most of our bulls are raised by a cow who makes her living in our cowherd, and sired by a bull that we own who has walked the pastures of our operation. We feel that any cow in our herd, whether she's 2 years old or 12, has the ability to raise a feature bull. Our commercial customers make their living on the productivity and consistency of their cowherd, and we feel that we should be the same.



1:30PM AT THE FARM, INNISFAIL, ALBERTA

In our conversations and visits with customers, the emphasis and desire for efficient, low input cows is always a focal point. We emphasize these same traits in our cowherd. Our winter calving cows graze banked grass or silage regrowth until just a couple weeks before they start calving, the summer calving cows eat as much straw as they do hay over the winter. We strive to make our cows work in the same manner that our customers make theirs. We never feed our cows any grain and the calves never get creep. Weaning a heavy calf is based on the cows milking ability, the calf's genetics, and our ability to manage our pastures and give the cow her best chance to succeed, the same as our customers.

We spend countless hours searching for the best genetics we can find to bring to our customers, and we are really excited about the herdsire battery that we have assembled. We believe the sire groups are consistent from sire to sire, and impressive across the board. The group of 46 Caldwell sons is the largest sire group we've ever offered. We strive to produce bulls that have a solid foundation, being structurally sound and eye appealing, with good hair, scrotal size and temperament. From this foundation, we can then add levels of calving ease, performance and carcass merit to the equation. There is so much information out there when it comes to breeding Angus cattle, we try and sort through all of that to make bulls that are balanced and work for our customers.

Our bulls are fed a forage-based ration. The bulls are fed a modest amount of grain, and we feel the bull's hair, semen tests, movement and feet reflect this. It is our opinion that feeding them in this manner allows them to show their true genetic potential. The bulls are all semen tested, vet inspected and fully guaranteed. We stand behind the bulls 100%, and if there are any issues with a bull sold in the sale, we will make sure it is looked after.

The yearling bulls were weaned the start of September. For the next two and a half months they ran as one group of 140 bulls in a twenty-acre field. They were

sorted into their pens in mid November, where they remain until sale day. The extra age bulls come from a completely different management group of 50 cows. The cows in the summer calving window calve on pasture from late May until July. These summer born bulls are weaned in early January. They graze again from June to late November, at which point they are moved to the sale facility. These bulls haven't been offered for sale before, they are bred specifically to be sold as extra age bulls. There are feature bulls in both the yearling and extra age groups.

A select group of open heifers will sell in this sale once again, highlighting the maternal side of the sires represented in the bulls. After a hiatus from our female sale last fall, we are again planning to host a female sale in late October, selling a group of bred heifers from the heart of our replacement pen. Stay tuned for more information regarding that.

We would like to invite you to our sale facility east of Bowden, on Tuesday, March 3rd. The sale cattle are always available for viewing, so we encourage people to come look at them anytime before the sale. Feel free to contact any of us to arrange a visit. The sale consultants listed in the catalogue are all familiar with the offering, so contact any of them for information or assistance with bidding. Online bidding will once again be offered with DLMS. Videos of the bulls will be posted online in the weeks leading up to the sale, on our website and at cattlevids.ca. We guarantee full satisfaction of any bulls that are purchased sight unseen.

Finally, we would like to sincerely thank all the people who support our program, whether it be buying, bidding, expressing interest or just showing support. This business is our livelihood, just like it is for our customers. We truly value the friendships and relationships we are lucky to have forged over our decades in this business.

Thank you and take care,

Gavin & Mabel • Colton

Brendyn, Quinn and Ivy



sale information

SALE LOCATION Exit from Queen ELizabeth #2 at Bowden. Go east 4 miles (6.4 km) on Highway 587 to Rge Rd 284, south 2 miles (3.2 km) to Twp Rd 342, east 1/2 mile (0.8 km). The sale location is on south side of road.



BELVIN ANGUS

Gavin, Mabel, and Colton Hamilton
Quinn, Brendyn, and Ivy Elliot
Box 6134 Innisfail, AB • T4G 1S8

HOME	403.224.2355	GAVIN	403.556.5246
COLTON	403.507.5416	QUINN	403.507.9142
MABEL	403.556.0127	BRENDYN	250.449.5071
RAYMOND	403.559.8235		

belvinangus@xplor.net
www.belvinangus.com

OFFERING 133 Yearling Bulls
15 Extra Age Bulls
12 Open Purebred Angus Heifers
Viewing of sale cattle is welcome at any time

SCHEDULE Tuesday, March 3, 2026
9:00 am Cattle available for viewing
12:00 pm Complimentary lunch
1:30 pm *Belvin Fourteenth Annual Bull Sale*
by video in heated sale facility



VIDEOS View videos of all bulls online at
belvinangus.com or cattlevids.ca

ONLINE VIEWING AND BIDDING The sale will be available for viewing and bidding through DLMS.ca. Log onto the website to sign up and if you have any problems, contact Mark Shologan 1.780.699.5082

sales staff

Ryan Dorran, Auctioneer	403.507.6483
Craig Flewelling, Ring Service	403.556.0515
Rod McLeod, Ring Service	403.540.7986
Mark Stock, Ring Service	403.357.8104

SALES REPRESENTATIVES

Bohrson Marketing

Scott Bohrson	403.370.3010
Riley Bohrson	639.213.7777

OBI Livestock Ltd.

Mark Holowaychuk	403.896.4990
Roger Peters	403.828.9815

Cantrix Livestock

Dave Saretsky	403.896.9616
---------------	--------------

Southern Alberta Representative

Ty Streeter	403.601.0145
-------------	--------------

BC Representative

Clint Ellis	604.309.5355
-------------	--------------

Canadian Angus Association Representative

Myles Immerkar, CEO

DELIVERY Belvin Angus will deliver bulls free in Western Canada OR bring your own trailer and receive a \$100.00 discount on the purchase price of the bull. All bulls remaining at Belvin Angus must be insured. Insurance will be available.

TERMS Full terms and conditions listed on page 76.

SALE ACCOMMODATIONS

Best Western Inn (Olds)	403.556.5900
Ramada Inn (Olds)	403.556.8349
Days Inn (Innisfail)	403.227.4405
Super 8 (Innisfail)	403.227.6001

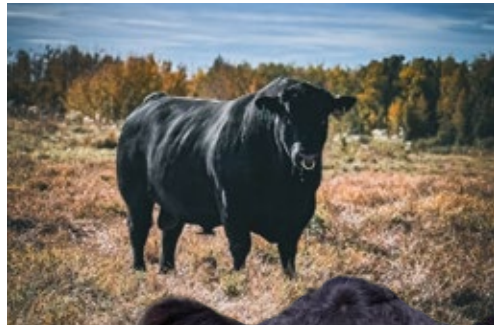
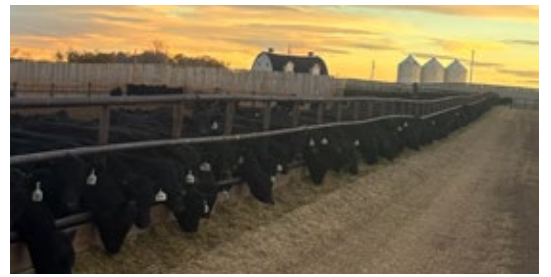


BA

14th annual bull sale

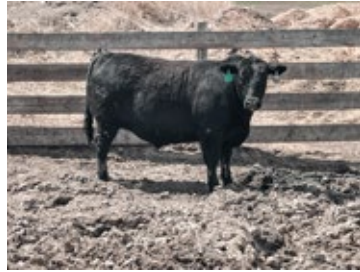
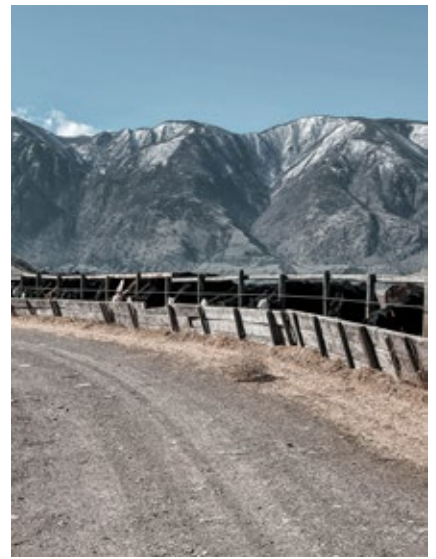
MARCH 3, 2026 AT 1:30PM AT THE FARM, INNISFAIL, ALBERTA

Catalog design/photos/videos by **top stock**



BA





FROM PASTURE, TO RAIL, TO PLATE...

**Bred to be profitable in all
segments of the industry.**

MAVERICK SIRED CARCASS



PROUD TO WORK
WITH INDUSTRY
PARTNERS



BA caldwell

SHAW CALDWELL 11432



Katie Senger
top stock

reference **B** sires **A** caldwell

SHAW CALDWELL 11432

Owned with Semex. Our never-ending search for herd bulls lead us to Shaw Cattle Co. in Southern Idaho in 2023. Shaw Caldwell 11432 was one of those rare bulls that when you laid eyes on him, you instantly knew you needed to own him. Selected as the \$59,000, all-time High Seller from the notable Shaw program, Caldwell has done nothing but excite us since then. His combination of calving ease, performance, scrotal, foot quality, body mass and style, in a mature frame that levels out to an acceptable and efficient level, is extremely impressive and hard to find. Not to mention, Caldwell is one of the most athletic and efficient breeders we've ever seen. This years group of Caldwell sons is the largest sire group we've ever offered. The consistency in this sire group, 46 head deep, is phenomenal, and hard to achieve. The first Caldwell daughters are calving, and they are angular, efficient, maternal cows with excellent udder quality. Sired by the popular Sitz Resilient 10208, and out of a full sister to Tehama Tahoe B767, Caldwell has a pedigree featuring some of the breeds most proven and tested genetics from the last decade. Last year the Caldwell sons were very well received, with 32 bulls averaging over \$17,600, the group this year is just as exciting and impressive. *46 sons sell.*

BW	WW	YW	MK	CED	CEM	CW	MB	REA	FT
-2.6	71	125	41	12.0	10.0	43	0.72	0.65	0.056



revival

WOODHILL REVIVAL H028 was the high selling bull in the 2021 Woodhill Farms sale at \$55,000. He is sired by the popular and deceased Woodhill Relevance, and out of a donor female from the very maternal Woodhill program. The Revival calves are born easily yet show impressive growth and shape at an early age. Revival is a strong footed bull who was admired by many visitors for his impressive phenotype. He also features leading EPD's across the board, with calving ease, growth, feed conversion and carcass quality. The Revival sons are extremely consistent in their type, with the length, shape, feed efficiency and eye appeal of their father. The Revival daughters are beautiful females, feminine in their design with impeccable udder quality. Due to his untimely death with an injury last spring, this will be the last big sire group of Revival sons we will sell. *Owned with Canadian Sires and Woodhill Farms. 22 sons sell.*



may city

BELVIN MAY CITY 0136 was the highlight and High Seller of our 2021 Female Sale. His combination of awesome muscle shape, a soft middle, great feet, big scrotal and a commanding presence made May City a popular individual, not to mention his outcross pedigree. The dam of May City is a feature cow in our program, she's deep ribbed, wedge shaped and great footed with an awesome udder. The May City sons are dense made like him, strong footed and deep sided. May City daughters are doing an excellent job as well, with offspring highlighted in this sale. *Owned with Canadian Sires and Brooking Angus. 11 sons sell.*



lawman

RIVERBEND LAWMAN J053 was selected from the 2022 Riverbend Ranches Sale as a balanced trait sire, who ranks near the top of the breed for CBI. Lawman is one of those elusive bulls who is over +1 for both marbling and REA, and he has added another level of carcass merit to our operation. The Lawman sons are rugged, muscular, good footed bulls, while the Lawman daughters to calve have a maternal look with great udders. His combination of carcass quality and maternal ability is hard to pull off. Lawman has a different pedigree with two leading donor dams backing him maternally. *Owned with Semex. 11 sons sell.*





BW	WW
-4.6	67
YW	MK
110	29
CED	CEM
17.0	16.0
CW	MB
39	0.38
REA	FT
0.32	0.046

HEIKEN TRADEMARK 1018 is a surefire calving ease sire, who combines a CE EPD of +17 with a BW EPD of -4.6, both numbers that are in the top 1% of the breed. Trademark calves have been born true to those numbers, making him an almost unmatched calving ease bull. Sired by the very popular Sitz Logo 12694, Trademark also has solid growth, exceptional docility and fertility built into his pedigree. Phenotypically he is soft made with impressive muscle, and he breeds that consistently into his offspring. The consistency of the Trademark sire group, both for calving ease and type, is very impressive. *10 sons sell.*



BW	WW
1.4	77
YW	MK
130	25
CED	CEM
4.0	3.0
CW	MB
54	1.27
REA	FT
0.81	0.005

BELVIN HIGHMORE 0330 was our \$34,000 High Seller in 2022 to Semex and Yarrow Creek, who was unfortunately lost to injury. Our best Maverick son, Highmore was a standout phenotypically, who had solid performance and the awesome marbling of his sire. His dam, Black Angel 3'17, is one of our most attractive and admired donor cows. A flush sister to Highmore is a standout in the summer herd. Due to limited semen, the number of Highmore calves is small, but the quality of the flush brothers on offer is exceptional. *4 sons sell.*



BW	WW
1.5	73
YW	MK
129	35
CED	CEM
2.0	7.0
CW	MB
51	1.05
REA	FT
0.69	0.055

CONNELY CRAFTSMAN, the \$500,000 High Seller at the 2022 Connealy Angus Sale, was the leading sire for registration in the American Angus Association for 2025. We selected Craftsman as an AI sire to incorporate his blend of growth, foot quality and carcass attributes. The Craftsman offspring are long-bodied, hairy, athletic bulls with the foot quality you would expect from their sire. *8 sons sell.*

BW	WW	YW	MK	CED	CEM	CW	MB	REA	FT
0.5	63	105	28	8.0	14.0	43	1.15	0.68	0.006

HART LIMIT UP 0506 was purchased from Hart Angus in South Dakota in their 2021 sale. His dam is the most productive female in the history of their program. Limit Up is a maternal brother to the \$290,000 Hart Showcase owned by Semex, while full brothers to Limit Up are owned by ST Genetics and Grimmus Cattle. Limit Up is as well rounded a sire as we have. He moderates frame while adding volume and the muscle expression of his sire, Hoover No Doubt. Limit Up also improves scrotal, has an incredible foot, and a Marb EPD of 1.15, ranking in the top 3% of the breed. *12 sons sell.*



limit
up

BA



BW	WW
2.0	74
YW	MK
128	29
CED	CEM
-3.0	3.0
CW	MB
51	0.59
REA	FT
0.87	-0.014

BALDRIDGE VEGAS G082 is an own son of the breed legend Baldridge Isabel Y69, making Vegas a maternal brother to the currently popular Badger as well as leading sires such as Colonel, Bronc, 38 Special and so many others. With his dynamic maternal pedigree, the Vegas daughters are some of our nicest young cows. The Vegas sons are dense made, stout and good footed. This will be the last chance to buy direct Vegas sons. *5 sons sell.*



BW	WW
3.0	55
YW	MK
95	33
CED	CEM
-2.0	5.0
CW	MB
28	0.20
REA	FT
0.21	0.038

BROOKING ROLL CALL is a bull with a maternally charged pedigree, with the foundation cow families of the Brooking program, Rose, Beauty and Annie K, all in his pedigree. Roll Call was a sale feature at the 2020 Brooking Sale, and his dam is the prolific Brooking Beauty 333 cow, one of the high earning cows in the history of the Brooking program. Roll Call daughters are excellent young cows, true to their maternal lineage. *4 sons sell.*



BW	WW
4.4	70
YW	MK
123	35
CED	CEM
-5.0	-4.0
CW	MB
50	0.55
REA	FT
0.64	0.036

BELVIN KOKANEE 2022 is a bull we retained to use ourselves, mostly based on the strength of his dam, Georgina 14'14, who is arguably our best and most influential cow of the past decade. Kokanee is a powerhouse sire, who himself has added frame, bone, muscle, scrotal and hair, and he has bred true to his type. The Kokanee sons on offer are some of the phenotypic standouts in the sale. Combining this body type and power with the maternal quality of 14'14 makes for an exciting sire group. *5 sons sell.*



BW	WW
2.3	108
YW	MK
169	29
CED	CEM
8.0	9.0
CW	MB
90	1.71
REA	FT
0.87	0.020

BASIN JAMESON 1076 was the \$600,000 sensation of the 2022 Sale Season. A bull with an almost unmatched combination of performance, carcass merit and foot quality, Jameson has become one of the widely used bulls in the breed. Selected for use as an outcross ET sire, Jameson did a great job siring bulls true to his projections, and daughters that are broody and powerful. The performance and scale of the Jameson sons is almost unmatched. *3 sons sell.*



BW	WW
1.0	67
YW	MK
119	27
CED	CEM
4.0	15.0
CW	MB
59	0.80
REA	FT
0.64	0.062

MUSGRAVE 316 EXCLUSIVE is an extremely maternal sire we used in our embryo program. Time tested and proven, Exclusive is sired by the legendary LD Capitalist 316. The Exclusive sons on offer are soggy, stout, good looking bulls with excellent foot quality. *4 sons sell.*



BW	WW
0.8	38
YW	MK
79	34
CED	CEM
7.0	8.0
CW	MB
38	0.74
REA	FT
0.42	0.015

BELVIN JUSTIFICATION 1402 was the lead off bull in our 2024 Sale, selling to our good friends at Lakeroad Angus. One of the best Vegas sons we've had, Justification is an all-around bull who sires good footed, balanced, docile offspring with muscle shape and style. *2 sons sell.*

yearling
bulls

— FORTY-SEVEN YEARS OF ANGUS —

BA





1

BELVIN NECHAKO 5001

MALE #2434143 DECEMBER 01 2024 BA 5001M PEN 3

LD Capitalist 316

MUSGRAVE 316 EXCLUSIVE

Musgrave Prim Lassie 163-386

SA V Pioneer 7301

BELVIN LADY BLOSSOM 23'12

Belvin Lady Blossom 62'06

Connealy Capitalist 028

LD Dixie Erica 2053

Musgrave Foundation

SCR Prim Lassie 80634

SA V Final Answer 0035

SA V Blackbird 5297

Peak Dot Stockman 254N

Belvin Lady Blossom 71'03

BW	ADJ 205	ADJ 365	BW	WW	YW	MK	CED	CEM	CW	MARB	REA	FT
65	656	1094	1.1	43	79	21	6.0	10.0	27	0.55	0.53	0.031

Magnum 4164
MATERNAL BROTHER



Nechako 5001 leads off a solid group of Exclusive 316 flush brothers from our potent Lady Blossom 23'12 donor female. These brothers are all balanced, deep sided, sound and eye appealing. The production record of 23'12 reads like a who's who of our bull customers, with sons selling to East & West Ranching Co. Ltd. (2), Jahnke Ranches (2), Flying E Ranche, Ilnicki Ranch, Mullin Ranches, ES Cattle Co, Whey Lake Farms and Niznik Ranches. Upcoming herdsire Belvin Magnum 4164, owned with IL Ranch, is another top end son of 23'12. Longevity, maternal strength and style are hallmarks of the 23'12 offspring. (EMBRYO TRANSFER).

5

BELVIN EXCLUSIVE 5005

MALE #2433005 DECEMBER 13 2024 BA 5005M PEN 4

LD Capitalist 316

MUSGRAVE 316 EXCLUSIVE

Musgrave Prim Lassie 163-386

SA V Pioneer 7301

BELVIN LADY BLOSSOM 23'12

Belvin Lady Blossom 62'06

Connealy Capitalist 028

LD Dixie Erica 2053

Musgrave Foundation

SCR Prim Lassie 80634

SA V Final Answer 0035

SA V Blackbird 5297

Peak Dot Stockman 254N

Belvin Lady Blossom 71'03

BW	ADJ 205	ADJ 365	BW	WW	YW	MK	CED	CEM	CW	MARB	REA	FT
86	631	1080	2.6	62	105	28	-1.0	10.0	48	0.41	0.54	-0.002

(EMBRYO TRANSFER)

Lady Blossom 23'12 DAM OF LOT 1, 5, 6, 15



6

BELVIN EXCLUSIVE 5006

MALE #2433004 DECEMBER 14 2024 BA 5006M PEN 2

LD Capitalist 316

MUSGRAVE 316 EXCLUSIVE

Musgrave Prim Lassie 163-386

SA V Pioneer 7301

BELVIN LADY BLOSSOM 23'12

Belvin Lady Blossom 62'06

Connealy Capitalist 028

LD Dixie Erica 2053

Musgrave Foundation

SCR Prim Lassie 80634

SA V Final Answer 0035

SA V Blackbird 5297

Peak Dot Stockman 254N

Belvin Lady Blossom 71'03

BW	ADJ 205	ADJ 365	BW	WW	YW	MK	CED	CEM	CW	MARB	REA	FT
92	745	1138	2.1	64	112	20	2.0	13.0	52	0.66	0.60	0.056

(EMBRYO TRANSFER).



BA 5006M

7

BELVIN NIGHT TRAIN 5007

MALE #2433003 DECEMBER 14 2024 BA 5007M PEN 2

Basin Deposit 6249

BASIN JAMESON 1076

Basin JOY 9140

Belvin Panic Switch 2'11

BELVIN GEORGINA 45'15

Belvin Georgina 60'00

Basin Advance 3134

Basin Lucy 4288

EXAR Monumental 6056B

Basin Joy 5367

SA V Pioneer 7301

Belvin Lady Blossom 14'09

G D A R Rolls Royce 203

Belvin Georgina 52'95

BW	ADJ 205	ADJ 365	BW	WW	YW	MK	CED	CEM	CW	MARB	REA	FT
91	848	1374	3.1	91	149	13	3.0	9.0	58	1.02	0.83	-0.005

Night Train 5007 is one of the performance standouts in the sale, with WW and YW EPD's in the Top 1% of the breed in Canada, and with a WW Ratio of 120. A flush brother to 5007 was a 2025 Sale Highlight to Pine Hill Colony. That bull was the powerhouse bull in last years sale, and 5007 matches his performance numbers. The dam of 5007 is a donor female with a notable track record of producing daughters and sons. 45'15 is best known as being the maternal grandam of May City, the Canadian Sires and Brooking Angus herdsire. (ET).



BA 5007M



Georgina 45'15 DAM OF LOT 7, 9



BA 5009M

9

BELVIN JAMESON 5009

MALE #2445145 DECEMBER 15 2024 BA 5009M PEN 2

Basin Deposit 6249

BASIN JAMESON 1076

Basin Joy 9140

Belvin Panic Switch 2'11

BELVIN GEORGINA 45'15

Belvin Georgina 60'00

Basin Advance 3134

Basin Lucy 4288

EXAR Monumental 6056B

Basin Joy 5367

S A V Pioneer 7301

Belvin Lady Blossom 14'09

G D A R Rolls Royce 203

Belvin Georgina 52'95

BW	ADJ 205	ADJ 365	BW	WW	YW	MK	CED	CEM	CW	MARB	REA	FT
94	883	1373	5.3	86	143	21	-4.0	9.0	64	0.98	0.70	-0.011

(EMBRYO TRANSFER).

10

BELVIN CALDWELL 5010

MALE #2417216 DECEMBER 16 2024 BA 5010M PEN 4

Sitz Resilient 10208

SHAW CALDWELL 11432

Tehama Mary Blackbird Dog4

LT Warden 8316

BELVIN QUEEN GEM 273'21

Belvin Queen Gem 8'15

Sitz Stellar 726D

Sitz Miss Burgess 1856

Tehama Upward Y238

Tehama Mary Blackbird Y684

Koupals B&B Titan 3013

LT Lucy 4078 TW

Belvin Tres Marias Patron 205

Braeside Queen Gem 41'13

BW	ADJ 205	ADJ 365	BW	WW	YW	MK	CED	CEM	CW	MARB	REA	FT
71	605	1127	-1.0	49	88	32	11.0	12.0	28	0.73	0.18	0.090

14

BELVIN CALDWELL 5014

MALE #2419750 DECEMBER 16 2024 BA 5014M PEN 6

Sitz Resilient 10208

SHAW CALDWELL 11432

Tehama Mary Blackbird Dog4

Bar-E-L Natural Law 52Y

BELVIN ECHO 3'21

HF Echo 111Y

Sitz Stellar 726D

Sitz Miss Burgess 1856

Tehama Upward Y238

Tehama Mary Blackbird Y684

S A V Bismarck 5682

Bar-E-L Magnolia 143K

HF El Tigre 28U

HF Echo 207N

BW	ADJ 205	ADJ 365	BW	WW	YW	MK	CED	CEM	CW	MARB	REA	FT
55	625	1051	0.2	64	119	36	5.0	6.0	43	0.75	0.23	0.075

TWIN



BA 5010M



BA 5015M

15

BELVIN EXCLUSIVE 5015

MALE #2433001 DECEMBER 16 2024 BA 5015M PEN 3

LD Capitalist 316

MUSGRAVE 316 EXCLUSIVE

Musgrave Prim Lassie 163-386

SA V Pioneer 7301

BELVIN LADY BLOSSOM 23'12

Belvin Lady Blossom 62'06

Connealy Capitalist 028

LD Dixie Erica 2053

Musgrave Foundation

SCR Prim Lassie 80634

SA V Final Answer 0035

SA V Blackbird 5297

Peak Dot Stockman 254N

Belvin Lady Blossom 71'03

BW	ADJ 205	ADJ 365	BW	WW	YW	MK	CED	CEM	CW	MARB	REA	FT
81	692	1094	3.6	65	110	18	2.0	10.0	47	0.70	0.37	0.072

(EMBRYO TRANSFER)

17

BELVIN JAMESON 5017

MALE #2432999 DECEMBER 16 2024 BA 5017M PEN 2

Basin Deposit 6249

BASIN JAMESON 1076

Basin JOY 9140

Belvin Panic Switch 2'11

BELVIN GEORGINA 45'15

Belvin Georgina 60'00

Basin Advance 3134

Basin Lucy 4288

EXAR Monumental 6056B

Basin Joy 5367

SA V Pioneer 7301

Belvin Lady Blossom 14'09

G D A R Rolls Royce 203

Belvin Georgina 52'95

BW	ADJ 205	ADJ 365	BW	WW	YW	MK	CED	CEM	CW	MARB	REA	FT
92	792	1241	3.6	83	141	28	4.0	10.0	71	1.35	0.54	0.043

(EMBRYO TRANSFER).

18

BELVIN TRADEMARK 5018

MALE #2417221 DECEMBER 17 2024 BA 5018M PEN 3

Sitz Logo 12964

HEIKEN TRADEMARK 1018

JCH HKN Lucy 9397

Baldrige Alternative E125

BELVIN ERELLA 230'23

Elliot 3E Erella 03X

Sitz Tebow 11860

Sitz Shauna 3152

JCH Chisum 7019

JCH Hazel 6155

Poss Easy Impact 0119

Baldrige Blackbird A030

SA V Final Answer 0035

Willow Erella R10

Trademark 5018 is a top end calving ease bull in the offering, with a double-digit CED and -1.4 BW EPD, both ranking in the Top 5% of the breed. 5018 couples his calving ease with solid performance and a gentle nature. His first calving dam is a beautifully constructed cow with a great udder. Her dam was a donor in our program as well.



BA 5018M

Elliot 3E Erella 03X

MATERNAL GRAND-DAM



BW	ADJ 205	ADJ 365	BW	WW	YW	MK	CED	CEM	CW	MARB	REA	FT
77	761	1187	-1.4	58	96	25	12.0	12.0	31	0.56	0.45	0.020



20

BELVIN NITRO 5020

MALE #2417222 DECEMBER 17 2024 BA 5020M PEN 1

Sitz Resilient 10208

SHAW CALDWELL 11432

Tehama Mary Blackbird D094

Woodhill Revival H028

BELVIN GEORGINA 223'23

Belvin Georgina 85'19

Sitz Stellar 726D

Sitz Miss Burgess 1856

Tehama Upward Y238

Tehama Mary Blackbird Y684

Woodhill Relevance

Woodhill Evergreen A43-F039

Connealy Earnan 076E

Belvin Georgina 105'10

A sale feature, Nitro 5020 is one of the phenotypic standouts in this year's group. Long bodied, stout made and packed full of muscle, 5020 combines that power with an eye appealing look and herdbull presence. We are very high on our Revival daughters, and females like the first calving dam of 5020 are the reason why, as she is feminine, efficient and perfect uddered. 5020 weaned off more than 800 lbs, over 2/3 the body weight of his dam. 5020 is an awesome combination of power, eye appeal, maternal strength and efficiency.

BW	ADJ 205	ADJ 365	BW	WW	YW	MK	CED	CEM	CW	MARB	REA	FT
83	802	1389	0.7	67	116	32	1.0	4.0	41	0.65	0.43	0.083

Georgina 105'10 GREAT GRAND-DAM





BA 5024M

22

BELVIN CALDWELL 5022

MALE #2417628 DECEMBER 20 2024 BA 5022M PEN 2

Sitz Resilient 10208

SHAW CALDWELL 11432

Tehama Mary Blackbird Dog4

EF Commando 1366

BELVIN QUEEN GEM 4'18

Belvin Queen Gem 75'16

Sitz Stellar 726D

Sitz Miss Burgess 1856

Tehama Upward Y238

Tehama Mary Blackbird Y684

EF Complement 8088

Riverbend Young Lucy W1470

KR Cash 4003

Braeside Queen Gem 41'13

BW	ADJ 205	ADJ 365	BW	WW	YW	MK	CED	CEM	CW	MARB	REA	FT
70	673	1234	0.1	69	124	40	7.0	3.0	46	0.70	0.68	0.084

TWIN.

Herdsmen Raymond "Mayday" Turney



24

BELVIN CALDWELL 5024

MALE #2419751 DECEMBER 20 2024 BA 5024M PEN 3

Sitz Resilient 10208

SHAW CALDWELL 11432

Tehama Mary Blackbird Dog4

Don Jose 176 Maxi

BELVIN TM KATE 1'22

Tres Marias A124 Federal 7630 T/E

Sitz Stellar 726D

Sitz Miss Burgess 1856

Tehama Upward Y238

Tehama Mary Blackbird Y684

O C C Headliner 661H

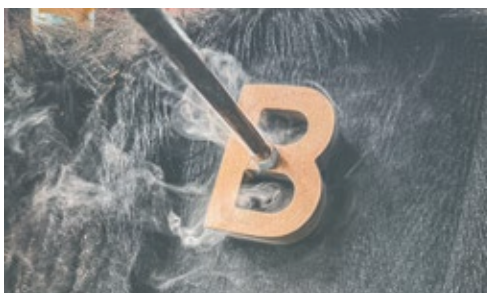
Tres Marias 6204 Hornero 5314

Tres Marias 9257 Federal

Tres Marias 7630 Zorzal 5740

BW	ADJ 205	ADJ 365	BW	WW	YW	MK	CED	CEM	CW	MARB	REA	FT
78	705	1252	-0.4	67	108	35	6.0	5.0	41	0.47	0.72	0.017

Caldwell 5024 is a sound made calving ease bull with solid performance, big scrotal and a unique twist to his maternal pedigree. The dam of 5024 is a beautifully made cow who was an embryo from the renowned Tres Marias program in Argentina. Her outcross pedigree traces back to Federal, who was a Two-Time Palermo Champion, as well as the breed legend Zorzal.



25

BELVIN TRADEMARK 5025

MALE #2417630 DECEMBER 20 2024 BA 5025M PEN 4

Sitz Logo 12964

HEIKEN TRADEMARK 1018

JCH HKN Lucy 9397

LT Warden 8316

BELVIN QUEEN GEM 68'23

Belvin Queen Gem 8'15

Sitz Tebow 11860

Sitz Shauna 3152

JCH Chisum 7019

JCH Hazel 6155

Koupals B&B Titan 3013

LT Lucy 4078 TW

Belvin Tres Marias Patron 205

Braeside Queen Gem 41'13

BW	ADJ 205	ADJ 365	BW	WW	YW	MK	CED	CEM	CW	MARB	REA	FT
73	763	1276	-2.2	62	109	28	11.0	11.0	39	0.75	0.42	0.048



BA 5025M

26

BELVIN TRADEMARK 5026

MALE #2417631 DECEMBER 22 2024 BA 5026M PEN 2

Sitz Logo 12964

HEIKEN TRADEMARK 1018

JCH HKN Lucy 9397

Soo Line Motive 9016

BELVIN LADY WREN 294'23

Willow Lady Wren So4

Sitz Tebow 11860

Sitz Shauna 3152

JCH Chisum 7019

JCH Hazel 6155

HF Kodiak 5R

TLA Beauty 5R

Vermilion Dateline 7078

BJ Lady Wren 3'97

BW	ADJ 205	ADJ 365	BW	WW	YW	MK	CED	CEM	CW	MARB	REA	FT
72	768	1297	-1.8	60	101	24	12.0	8.0	41	0.28	0.42	0.036



BA 5026M

30

BELVIN CALDWELL 5030

MALE #2417632 DECEMBER 23 2024 BA 5030M PEN 3

Sitz Resilient 10208

SHAW CALDWELL 11432

Tehama Mary Blackbird Dog4

Baldridge Mercenary Doo2

BELVIN LASSIE 51'23

Belvin Lassie 236'21

Sitz Stellar 726D

Sitz Miss Burgess 1856

Tehama Upward Y238

Tehama Mary Blackbird Y684

EF Commando 1366

Baldridge Rachel A029

Baldridge Discovery D121

Belvin Lassie 13'06

BW	ADJ 205	ADJ 365	BW	WW	YW	MK	CED	CEM	CW	MARB	REA	FT
78	814	1362	-1.6	70	123	35	11.0	5.0	66	0.65	0.80	0.039

The Caldwell sire group is remarkable for their consistency in type and quality. 5030 is another curve bending bull, with double digit CE coupled with top end performance. His ADJ WW of 814 lbs gives him a WW Ratio of 114. The dam of 5030 is a moderate framed Mercenary daughter with a really nice udder.



BA 5030M



BA 5033M

33

BELVIN NASHVILLE 5033

MALE #2417636 DECEMBER 23 2024 BA 5033M PEN 1

Sitz Resilient 10208

SHAW CALDWELL 11432

Tehama Mary Blackbird Dog4

Hart Limit Up 0506

BELVIN LADY BLOSSOM 21'23

Belvin Lady Blossom 43'21

Sitz Stellar 726D

Sitz Miss Burgess 1856

Tehama Upward Y238

Tehama Mary Blackbird Y684

Hoover No Doubt

Hart Whitney 3206

Baldrige Alternative E125

Belvin Lady Blossom 44'14

Nashville 5033 is yet another feature Caldwell son. Long bodied and big topped, 5033 is phenotypically imposing. A big spread bull, 5033 ranks in the Top 10% of the breed for BW, WW and YW, as well as SC and Milk. His numbers fused with his structural quality and solid carcass merit make 5033 one of the most balanced trait bulls in the sale. The dam of 5033 is one of the nicest Limit Up daughters we have, while his maternal grandam was a powerhouse donor cow. This combination of power, balanced traits and body type make 5033 a definite sale highlight.

BW	ADJ 205	ADJ 365	BW	WW	YW	MK	CED	CEM	CW	MARB	REA	FT
75	820	1362	-0.3	75	129	30	8.0	7.0	54	0.55	0.63	0.018





BA 5037M

BW	ADJ 205	ADJ 365	BW	WW	YW	MK	CED	CEM	CW	MARB	REA	FT
78	702	1173	0.5	59	109	33	5.0	5.0	40	0.28	0.94	-0.012

37

BELVIN CALDWELL 5037

MALE #2428375 DECEMBER 24 2024 BA 5037M PEN 3

Sitz Resilient 10208

SHAW CALDWELL 11432

Tehama Mary Blackbird D094

Belvin Velasquez 203'11

BELVIN LADY BLOSSOM 21'14

Belvin Lady Blossom 54'12

Sitz Stellar 726D

Sitz Miss Burgess 1856

Tehama Upward Y238

Tehama Mary Blackbird Y684

S A V Bismarck 5682

Belvin Lady Blossom 31'96

Belvin Tres Marias Patron 205

Belvin Lady Blossom 45'10

Another top end Caldwell son, 5037 is a sale highlight with his exceptional maternal backing coupled with solid growth, structural quality, milk and big scrotal. The dam of 5037 is a feature donor cow who has 5 sons selling in this year's sale. A daughter of Velasquez going back to Patron, Lady Blossom 21'14 has a long history of top end production. Sons of 21'14 have sold to East & West Ranching Co. Ltd., Flying E Rancho, IL Ranch, Wheatland Farming Co., Whey Lake Farms, Glenbar Ranching, Double F Farms, Box Elder Farming Co., Seven Four Ranches and Barrington Ranch. (EMBRYO TRANSFER).

38

BELVIN NAVAJO 5038

MALE #2417641 DECEMBER 24 2024 BA 5038M PEN 2

Sitz Resilient 10208

SHAW CALDWELL 11432

Tehama Mary Blackbird D094

Baldrige Vegas G082

BELVIN LADY BLOSSOM 57'23

Belvin Lady Blossom 15'15

Sitz Stellar 726D

Sitz Miss Burgess 1856

Tehama Upward Y238

Tehama Mary Blackbird Y684

Spring Cove Reno 4021

Baldrige Isabel Y69

B C Lookout 7024

Belvin Lady Blossom 5'13

Navajo 5038 is possibly the best combination of calving ease and growth in the sale. From 67 lbs at birth to an 825 lb ADJ WW off a first calf heifer, the curve bending ability of 5038 is immense. His +14 CE and -2.4 BW EPD's manifest to +75 and +128 at weaning and a year. All those figures are in the Top 10% of the breed. Phenotypically, 5038 is thick made with added length and frame. The maternal strength of the Lady Blossom cow family and Vegas round out what is a very impressive genetic package.



BA 5038M

BW	ADJ 205	ADJ 365	BW	WW	YW	MK	CED	CEM	CW	MARB	REA	FT
67	825	1296	-2.4	75	128	44	14.0	9.0	45	0.75	0.75	0.004



Queen Gem 34'23 DAM



BA 5039M

BW	ADJ 205	ADJ 365	BW	WW	YW	MK	CED	CEM	CW	MARB	REA	FT
85	788	1349	1.7	60	109	22	3.0	2.0	51	0.72	0.87	0.065

39

BELVIN NORDEGG 5039

MALE #2417642 DECEMBER 24 2024 BA 5039M PEN 1

Woodhill Relevance

WOODHILL REVIVAL H028

Woodhill Evergreen A43-F039

Baldrige Mercenary D002

BELVIN QUEEN GEM 34'23

Belvin Queen Gem 273'21

Connealy Confidence Plus

Woodhill Blackbird X197-Z7

Basin Payweight 1682

Woodhill Evergreen Y10-A43

EF Commando 1366

Baldrige Rachel A029

LT Warden 8316

Belvin Queen Gem 8'15

Nordegg 5039 is a feature Revival son in this year's sale. Soggy made and eye appealing, 5039 is an excellent combination of feed efficiency, carcass quality and phenotype. The Mercenary sired dam of 5039 is a beautiful uddered, moderate framed, first calver. Look for 5039 to sire feed efficient steers with maternal, easy keeping daughters.

40

BELVIN NIRVANA 5040

MALE #2417643 DECEMBER 24 2024 BA 5040M PEN 1

Sitz Resilient 10208

CONNEALY CRAFTSMAN

Black Cathy of Conanga 8521

Brooking Bank Note 4040

ANCHORAGE JUNE 8152F

Bobo June 0690

Sitz Stellar 726D

Sitz Miss Burgess 1856

Connealy Niobrara 5451

Black Carla of Conanga 450

Connealy Earnan 076E

E A Rose 918

SQ Credence 67S

EXAR June 7341

Nirvana 5040 is a high performance, featured Craftsman son. His WW and YW EPDs are in the top 2% of the breed. The actual WW of 5040 isn't as high as it would have been, due to the fact that his mother died in April, and he was on his own from that point forward. The end product merit of 5040 is solid, while his mother was a beautiful made Bank Note daughter. A maternal sister to 5040 sold to Lake Road Angus in the 2025 Angus Collection Sale. 5040 is a solid combination of performance and maternal strength.



June 75'24 MATERNAL SISTER



BA 5040M

BW	ADJ 205	ADJ 365	BW	WW	YW	MK	CED	CEM	CW	MARB	REA	FT
93	747	1270	5.2	87	146	12	-9.0	1.0	52	0.91	0.70	0.050



BA 5043M

43

BELVIN CALDWELL 5043

MALE #2417645 DECEMBER 24 2024 BA 5043M PEN 3

Sitz Resilient 10208

SHAW CALDWELL 11432

Tehama Mary Blackbird Dog4

Woodhill Revival Ho28

BELVIN GEORGINA 125'23

Belvin Georgina 26'20

Sitz Stellar 726D

Sitz Miss Burgess 1856

Tehama Upward Y238

Tehama Mary Blackbird Y684

Woodhill Relevance

Woodhill Evergreen A43-F039

Baldrige Discovery D121

Belvin Georgina 159'12

BW	ADJ 205	ADJ 365	BW	WW	YW	MK	CED	CEM	CW	MARB	REA	FT
78	717	1278	0.6	69	127	32	8.0	4.0	49	0.33	0.69	0.064



BA 5044M

44

BELVIN CALDWELL 5044

MALE #2417916 DECEMBER 25 2024 BA 5044M PEN 3

Sitz Resilient 10208

SHAW CALDWELL 11432

Tehama Mary Blackbird Dog4

Baldrige Mercenary Doo2

BELVIN LADY BLOSSOM 273'23

Belvin Lady Blossom 48'13

Sitz Stellar 726D

Sitz Miss Burgess 1856

Tehama Upward Y238

Tehama Mary Blackbird Y684

EF Commando 1366

Baldrige Rachel A029

Belvin Warrior 6'09

Belvin Lady Blossom 51'07

BW	ADJ 205	ADJ 365	BW	WW	YW	MK	CED	CEM	CW	MARB	REA	FT
74	759	1299	0.8	66	116	38	6.0	9.0	51	0.54	0.88	0.017

45

BELVIN CRAFTSMAN 5045

MALE #2428373 DECEMBER 25 2024 BA 5045M PEN 6

Sitz Resilient 10208

CONNEALY CRAFTSMAN

Black Cathy of Conanga 8521

SA V Heavy Hitter 6347

BELVIN LADY BLOSSOM 42'10

Belvin Lady Blossom 40'01

Sitz Stellar 726D

Sitz Miss Burgess 1856

Connealy Niobrara 5451

Black Carla of Conanga 450

SA V 8180 Traveler 004

SA V Bessie Heiress 1184

Woodlawn Stockyard 208

Belvin Lady Blossom 45'97

BW	ADJ 205	ADJ 365	BW	WW	YW	MK	CED	CEM	CW	MARB	REA	FT
87	586	1089	3.2	61	101	38	-1.0	3.0	44	0.16	0.15	0.054



CONGRATULATIONS

Callum Miller

on an incredible season of bullriding.

46

BELVIN NIGHTINGALE 5046

MALE #2428372 DECEMBER 25 2024 BA 5046M PEN 2

*Poss Maverick***BELVIN HIGHMORE 0330***Belvin 3E Black Angel 3'17**Belvin Velasquez 203'11***BELVIN LADY BLOSSOM 21'14***Belvin Lady Blossom 54'12**Basin Payweight 1682**Poss Pride 5163**Soo Line Motive 9016**Werner Black Angel 1299**S A V Bismarck 5682**Belvin Lady Blossom 31'96**Belvin Tres Marias Patron 205**Belvin Lady Blossom 45'10*

BW	ADJ 205	ADJ 365	BW	WW	YW	MK	CED	CEM	CW	MARB	REA	FT
85	700	1390	2.7	59	107	28	2.0	6.0	48	0.57	0.90	0.026

(EMBRYO TRANSFER)



BA 5046M

49

BELVIN NANTON 5049

MALE #2428371 DECEMBER 25 2024 BA 5049M PEN 1

*Poss Maverick***BELVIN HIGHMORE 0330***Belvin 3E Black Angel 3'17**Belvin Velasquez 203'11***BELVIN LADY BLOSSOM 21'14***Belvin Lady Blossom 54'12**Basin Payweight 1682**Poss Pride 5163**Soo Line Motive 9016**Werner Black Angel 1299**S A V Bismarck 5682**Belvin Lady Blossom 31'96**Belvin Tres Marias Patron 205**Belvin Lady Blossom 45'10*

BW	ADJ 205	ADJ 365	BW	WW	YW	MK	CED	CEM	CW	MARB	REA	FT
80	732	1280	1.9	60	107	24	5.0	7.0	43	0.49	0.51	0.018

Nanton 5049 is a front-end Highmore son patterning much like his full brothers, who sell as lots 46, 87, and 161. This big bodied, loose hid bull ties it all together with performance, smooth muscle pattern, maternal merit and a balanced set of figures. 5049 combines two of our very prominent donor females, with the highly potent Lady Blossom 21'14 and the storied 3'17, who is one of the elite production females of her era in our program. (EMBRYO TRANSFER).



BA 5049M



53

BELVIN NEXT LEVEL 5053

MALE #2417946 DECEMBER 25 2024 BA 5053M PEN 1

Sitz Resilient 10208

SHAW CALDWELL 11432

Tehama Mary Blackbird D094

Baldrige Mercenary D002

BELVIN QUEEN 37'19

Belvin Queen 177'16

Sitz Stellar 726D

Sitz Miss Burgess 1856

Tehama Upward Y238

Tehama Mary Blackbird Y684

EF Commando 1366

Baldrige Rachel A029

Belvin Velasquez 203'11

Belvin Queen 144'10

BW	ADJ 205	ADJ 365	BW	WW	YW	MK	CED	CEM	CW	MARB	REA	FT
89	746	1307	1.8	66	114	32	7.0	10.0	38	0.45	0.84	0.021

An elite sale feature, Next Level 5053 has been a standout from the start. Stout, dense made, big boned and good headed, 5053 showed early maturity and has been an imposing bull since early summer. The exceptional dam of 5053, Queen 37'19, is one of our absolute best cows. Referred to as the "Fertility Queen", 37'19 has now remarkably calved 6 times in a five-day calving window. The last two sons of 37'19 were sale features to Lucky Springs Farms and Greenwood Angus. The 2nd High Selling Bull to CMT Farms in last years sale was out of a 37'19 daughter. 5053 combines maternal power, fertility, structural quality and scrotal size into a powerhouse package.

Loan Shark 3027 MATERNAL BROTHER



Modelo 4032 MATERNAL BROTHER



Mercenary D002 MATERNAL GRAND-SIRE





56

BELVIN REVIVAL 5056

MALE #2417953 DECEMBER 26 2024 BA 5056M PEN 3

Woodhill Relevance

WOODHILL REVIVAL H028

Woodhill Evergreen A43-F039

Sitz Major 707F

BELVIN GEORGINA 21'22

Belvin Georgina 024'14

Connealy Confidence Plus

Woodhill Blackbird X197-Z7

Basin Payweight 1682

Woodhill Evergreen Y10-A43

Sitz Stellar 726D

Sitz Lady 383D

SA V Final Answer 0035

Belvin Georgina 81'03

BW	ADJ 205	ADJ 365	BW	WW	YW	MK	CED	CEM	CW	MARB	REA	FT
82	704	1299	1.0	67	125	20	6.0	9.0	51	0.29	0.50	0.045

61

BELVIN CALDWELL 5061

MALE #2417958 DECEMBER 26 2024 BA 5061M PEN 2

Sitz Resilient 10208

SHAW CALDWELL 11432

Tehama Mary Blackbird D094

Poss Maverick

BELVIN BARBARA 47'20

Belvin Barbara 38'15

Sitz Stellar 726D

Sitz Miss Burgess 1856

Tehama Upward Y238

Tehama Mary Blackbird Y684

Basin Payweight 1682

Poss Pride 5163

Belvin Tres Marias Patron 205

Barbara of Ring Creek 65Y

Caldwell 5061 is another big spread bull, with extra size and length. Negative BW, double digit CE and top end performance make 5061 yet another of the top Caldwell sons. 5061 features ten different EPD's in the top 10% of the breed, including a CBI in the top 1%. The Maverick sired dam of 5061 is a powerhouse cow with extra volume and performance. She goes back to a beautiful donor female purchased from Ring Creek Farms. The Caldwell sire group is packed with quality, and 5061 rates near the top.

62

BELVIN CALDWELL 5062

MALE #2417959 DECEMBER 26 2024 BA 5062M PEN 4

Sitz Resilient 10208

SHAW CALDWELL 11432

Tehama Mary Blackbird D094

Woodhill Revival H028

BELVIN BARAJA 73'23

Belvin Tres Marias 6'13

Sitz Stellar 726D

Sitz Miss Burgess 1856

Tehama Upward Y238

Tehama Mary Blackbird Y684

Woodhill Relevance

Woodhill Evergreen A43-F039

Tres Marias 6301 Zorzal

Tres Marias 6914 Baraja 5526

BW	ADJ 205	ADJ 365	BW	WW	YW	MK	CED	CEM	CW	MARB	REA	FT
88	728	1234	2.4	70	126	23	-1.0	5.0	39	0.52	0.30	0.079



BA 5061M

BW	ADJ 205	ADJ 365	BW	WW	YW	MK	CED	CEM	CW	MARB	REA	FT
78	811	1310	-0.9	85	138	40	11.0	10.0	51	0.81	0.24	0.058



Miss Legacy 019 **GRAND-DAM**



BA 5066M

BW	ADJ 205	ADJ 365	BW	WW	YW	MK	CED	CEM	CW	MARB	REA	FT
72	760	1283	0.6	65	110	24	8.0	6.0	28	0.24	0.70	-0.023

66

BELVIN NICKEL PLATE 5066

MALE #2417964 DECEMBER 27 2024 BA 5066M PEN 1

Sitz Resilient 10208

SHAW CALDWELL 11432

Tehama Mary Blackbird D094

Belvin May City 0136

BELVIN MISSIE 147'23

KFC 839L Miss Legacy 019

Sitz Stellar 726D

Sitz Miss Burgess 1856

Tehama Upward Y238

Tehama Mary Blackbird Y684

Vermilion Reride F116

Belvin Georgina 121'17

O C C Legacy 839L

KFC 4532 Miss Rainmaker

The Caldwell x May City mating has worked very well, and Nickel Plate 5066 is no exception. Deep sided, hairy, sound and dense made, 5066 is an attractive made bull. His dam is a member of one of our best flushes in recent years, May City crossed with the prominent 0190X donor female. We have three exceptional young cows from that flush, while another one resides at Everblack Angus and one in Mexico. One of the very top heifer calves in the replacement pen is a full sibling in blood to 5066, a Caldwell out of his dam's flush sister. The maternal strength behind 5066 is huge.

70

BELVIN NIXON 5070

MALE #2418031 DECEMBER 27 2024 BA 5070M PEN 3

Sitz Resilient 10208

SHAW CALDWELL 11432

Tehama Mary Blackbird D094

Poss Maverick

BELVIN ERICA 9'21

Belvin Erica 26'19

Sitz Stellar 726D

Sitz Miss Burgess 1856

Tehama Upward Y238

Tehama Mary Blackbird Y684

Basin Payweight 1682

Poss Pride 5163

Baldrige Mercenary D002

Belvin Erica 56'17

At the risk of sounding repetitive, Nixon 5070 is another top flight member of the Caldwell sire group, and one of the feature calving ease bulls in the sale. A maternal sister to 5070 is a front end first calver this year. Awesome muscle shape, breed character and great feet make 5070 a phenotypic standout. Calving ease, solid performance, feed efficiency, a big ribeye and a CBI over +400 make 5070 a genotypic standout as well.



BA 5070M

BW	ADJ 205	ADJ 365	BW	WW	YW	MK	CED	CEM	CW	MARB	REA	FT
89	705	1279	-1.0	61	109	41	9.0	6.0	46	0.64	1.08	0.011



BA 5077M

77

BELVIN NAVIGATOR 5077

MALE #2428367 DECEMBER 28 2024 BA 5077M PEN 2

Sitz Resilient 10208

CONNEALY CRAFTSMAN

Black Cathy of Conanga 8521

SA V Heavy Hitter 6347

BELVIN LADY BLOSSOM 42'10

Belvin Lady Blossom 40'01

Sitz Stellar 726D

Sitz Miss Burgess 1856

Connealy Niobrara 5451

Black Carla of Conanga 450

SA V 8180 Traveler 004

SA V Bessie Heiress 1184

Woodlawn Stockyard 208

Belvin Lady Blossom 45'97

BW	ADJ 205	ADJ 365	BW	WW	YW	MK	CED	CEM	CW	MARB	REA	FT
87	799	1283	1.4	62	111	37	7.0	5.0	49	0.57	0.85	-0.007

(EMBRYO TRANSFER).

81

BELVIN KOKANEE 5081

MALE #2418039 DECEMBER 28 2024 BA 5081M PEN 2

Square B Atlantis 8060

BELVIN KOKANEE 2022

Belvin Georgina 14'14

Poss Maverick

BELVIN LADY BLOSSOM 95'21

Belvin Lady Blossom 102'12

SA V Rainfall 6846

Elbanna of Conanga 1209

Belvin Tres Marias Patron 205

Belvin Georgina 33'12

Basin Payweight 1682

Poss Pride 5163

Belvin Vicarious 1'10

Belvin Lady Blossom 7'05

BW	ADJ 205	ADJ 365	BW	WW	YW	MK	CED	CEM	CW	MARB	REA	FT
93	732	1265	4.1	70	122	34	-5.0	3.0	52	0.92	0.86	0.019

82

BELVIN NIGHT SHIFT 5082

MALE #2418040 DECEMBER 28 2024 BA 5082M PEN 1

Sitz Resilient 10208

SHAW CALDWELL 11432

Tehama Mary Blackbird Dog4

Square B Atlantis 8060

BELVIN ANDRIA 19'23

Belvin Andria 48'15

Sitz Stellar 726D

Sitz Miss Burgess 1856

Tehama Upward Y238

Tehama Mary Blackbird Y684

SA V Rainfall 6846

Elbanna of Conanga 1209

Wawa Creek Monarch 248'12

Belvin Tres Marias Andria 7313

Night Shift 5082 is big nuttred, stout hipped, sound made and packed full of muscle, he is one of the best-looking bulls in the sale. The dam of 5082 is a gorgeous Atlantis daughter, her full sister was the lead off female in our 2024 Female Sale, selling to Angus El Sauz in Mexico. The maternal grandam of 5082 was a preeminent donor cow in our operation. This Caldwell son is maternally charged and impressive from every angle, one of the definite standouts in the sale.



BA 5082M

Andria 25'23 FULL SISTER TO DAM



BW	ADJ 205	ADJ 365	BW	WW	YW	MK	CED	CEM	CW	MARB	REA	FT
82	810	1345	0.1	72	115	36	5.0	4.0	46	0.45	0.78	0.018



Monterrey 4125
BA 5087M MATERNAL BROTHER



84

BELVIN TRADEMARK 5084

MALE #2418311 DECEMBER 28 2024 BA 5084M PEN 4

Sitz Logo 12964

HEIKEN TRADEMARK 1018

JCH HKN Lucy 9397

Sitz Major 707F

BELVIN LADY BLOSSOM 166'23

Belvin Lady Blossom 174'19

Sitz Tebow 11860

Sitz Shauna 3152

JCH Chisum 7019

JCH Hazel 6155

Sitz Stellar 726D

Sitz Lady 383D

Musgrave 316 Stunner

Belvin Lady Blossom 43'14

BW	ADJ 205	ADJ 365	BW	WW	YW	MK	CED	CEM	CW	MARB	REA	FT
61	769	1201	-2.4	75	126	24	13.0	12.0	51	0.03	0.41	0.062

87

BELVIN NICOLA 5087

MALE #2428364 DECEMBER 29 2024 BA 5087M PEN 2

Poss Maverick

BELVIN HIGHMORE 0330

Belvin 3E Black Angel 3'17

Belvin Velasquez 203'11

BELVIN LADY BLOSSOM 21'14

Belvin Lady Blossom 54'12

Basin Payweight 1682

Poss Pride 5163

Soo Line Motive 9016

Werner Black Angel 1299

S A V Bismarck 5682

Belvin Lady Blossom 31'96

Belvin Tres Marias Patron 205

Belvin Lady Blossom 45'10

BW	ADJ 205	ADJ 365	BW	WW	YW	MK	CED	CEM	CW	MARB	REA	FT
98	800	1438	2.5	62	108	30	1.0	0.0	47	0.33	0.48	0.019

Nicola 5087 is one of the top power bulls in the sale and has been a favorite from day one. A member of the popular Highmore x Lady Blossom 21'14 flush mates that are on offer. 5087 is massive and heavily muscled, with added bone and hair, presented in a up headed, attractive phenotype. This heavy weight has commanding presence and elite performance indexing at the top of his contemporary at both WW and YW. A maternal brother was selected last year as a sale feature by Double F Farms Ltd. 5087 should go to a home where he can run in larger groups and be handled less intimately. (EMBRYO TRANSFER).



Gavin and Mabel on their 50th wedding anniversary



BA 5089M

BW	ADJ 205	ADJ 365	BW	WW	YW	MK	CED	CEM	CW	MARB	REA	FT
81	734	1301	0.2	73	126	30	6.0	11.0	51	0.91	0.77	-0.016

89

BELVIN NATIONAL 5089

MALE #2418320 DECEMBER 29 2024 BA 5089M PEN 1

Sitz Resilient 10208

SHAW CALDWELL 11432

Tehama Mary Blackbird D094

Baldrige Alternative E125

BELVIN LADY BLOSSOM 79'21

Belvin Lady Blossom 63'19

Sitz Stellar 726D

Sitz Miss Burgess 1856

Tehama Upward Y238

Tehama Mary Blackbird Y684

Poss Easy Impact 0119

Baldrige Blackbird A030

Montana Octane 6121

Belvin Lady Blossom 79'10

National 5089 is a Caldwell son with strong carcass attributes, with a MARB EPD in the Top 10% of the breed and strong REA as well. Deep sided and thick made, 5089 is a large scrotal, balanced bull that is easy to find in the pen.

93

BELVIN NORTH STAR 5093

MALE #2418344 DECEMBER 29 2024 BA 5093M PEN 1

Woodhill Relevance

WOODHILL REVIVAL H028

Woodhill Evergreen A43-F039

Baldrige Vegas G082

BELVIN BLACKBIRD 180'22

Bar-E-L Blackbird 27F

Connealy Confidence Plus

Woodhill Blackbird X197-Z7

Basin Payweight 1682

Woodhill Evergreen Y10-A43

Spring Cove Reno 4021

Baldrige Isabel Y69

Ring Creek Flynn 25A

Bar-E-L Blackbird 76C

North Star 5093 is a long, smooth made, big topped Revival son. A negative BW bull that could be used on heifers, the best part of 5093 is his beautiful dam. One of our best Vegas daughters, Blackbird 180'22 is on the path to being a donor female. A maternal brother to 5093 sold to East & West Ranching Co. Ltd. in last years sale. With the combination of Revival, Vegas and the Blackbird cow family, 5093 will leave a beautiful set of daughters.



BA 5093M

BW	ADJ 205	ADJ 365	BW	WW	YW	MK	CED	CEM	CW	MARB	REA	FT
81	702	1276	-1.4	60	107	29	7.0	7.0	35	0.76	0.26	0.075





BA 5095M

BW	ADJ 205	ADJ 365	BW	WW	YW	MK	CED	CEM	CW	MARB	REA	FT
75	802	1409	1.5	83	140	30	0.0	1.0	54	0.75	0.92	0.013

95

BELVIN NEVADA 5095

MALE #2418347 DECEMBER 30 2024 BA 5095M PEN 1

Spring Cove Reno 4021

BALDRIDGE VEGAS G082

Baldrige Isabel Y69

Sitz Major 707F

BELVIN LADY BLOSSOM 239'21

Belvin Lady Blossom 19'19

KM Broken Bow 002

Spring Cove Liza 021

Styles Upgrade J59

Baldrige Isabel T935

Sitz Stellar 726D

Sitz Lady 383D

Coleman Charlo 0256

Belvin Lady Blossom 11'17

Nevada 5095 is possibly the stoutest bull in the sale. Quiet, good looking, massive middled and heavy muscled, 5095 offers performance at the top of the breed in a moderate framed, efficient package. The dam of 5095 is an easy doing, efficient Major daughter, who is one of the nicest females in her age group, while her dam is an eye-catching Charlo daughter. With Vegas and his Isabel cow family behind him, the maternal side of 5095 matches his performance.

99

BELVIN LIMIT UP 5099

MALE #2437813 DECEMBER 30 2024 BA 5099M PEN 1

Hoover No Doubt

HART LIMIT UP 0506

Hart Whitney 3206

Belvin Tres Marias Patron 205

BELVIN 3E RITA 23'17

Willow Rita U12

Mogck Bullseye

Miss Blackcap Ellston J2

Connealy Cavalry 1149

Hart Whitney 0244

Alston 5384 Catriel F

Tres Marias 6764 Rosanegra 5214

SA V Net Worth 4200

Willow Rita R21

5099 fits the Limit Up mold to a tee, having breed character, base width and being packed full of muscle. His sire ranks in the top 1% of the Angus population for \$Maternal, which tabulates traits emphasized for female success and retention. 5099 has looked impressive from a young age at the side of his potent Patron sired dam, with his early maturity and attractive look. 5099's dam displayed elite type and kind with ideal size, femininity, and broody body type. Two maternal brothers are working at Barrington Ranch Ltd.



BA 5099M

BW	ADJ 205	ADJ 365	BW	WW	YW	MK	CED	CEM	CW	MARB	REA	FT
87	743	1219	2.1	59	106	29	2.0	9.0	41	0.27	0.45	0.026



BA 5104M

BW	ADJ 205	ADJ 365	BW	WW	YW	MK	CED	CEM	CW	MARB	REA	FT
82	800	1319	0.3	74	125	30	3.0	4.0	44	0.98	0.74	0.010

104 BELVIN CALDWELL 5104

MALE #2418363 DECEMBER 31 2024 BA 5104M PEN 3

Sitz Resilient 10208

SHAW CALDWELL 11432

Tehama Mary Blackbird D094

Baldrige Vegas G082

BELVIN ERROLINE 228'23

Belvin 3E Erroline 48'16

Sitz Stellar 726D

Sitz Miss Burgess 1856

Tehama Upward Y238

Tehama Mary Blackbird Y684

Spring Cove Reno 4021

Baldrige Isabel Y69

KR Cash Flow M1C

KFC 839L Erroline 0184X

Caldwell 5104 is a high indexing curve bender with elite pre and post weaning growth indexes. This high MARB bull posted a WW index of 111. 5104 is a long bodied, smooth muscled bull with added extension, patterning much like his sire. His dam is a hard-working Vegas daughter that represents the maternal strength of Y69 in her pedigree, raising an 800 lb WW as a first calf heifer. This athletic individual stacks up a very balanced and impressive set of predictions landing him in the top 1% of the breed for CBI (Combined) index.

105 BELVIN NISBIT 5105

MALE #2418366 DECEMBER 31 2024 BA 5105M PEN 1

Sitz Resilient 10208

SHAW CALDWELL 11432

Tehama Mary Blackbird D094

HF Junction 18B

BELVIN EMBLYNETTE 89'18

Belvin Emblynette 201'12

Sitz Stellar 726D

Sitz Miss Burgess 1856

Tehama Upward Y238

Tehama Mary Blackbird Y684

Young Dale Yohann 39Y

HF Elsiemere 106W

HF Kodiak 5R

SA V Emblynette 5486

Another high performing, efficient Caldwell son, Nisbit 5105 is Top 10% of the breed for WW, YW, RADG and SC. The dam of 5105 is from the famed Emblynette cow family, and she has a stellar production record with past sons selling to Vandenhoven Farms, East & West Ranching Co. Ltd. and Three Hills Colony. Deep sided and long bodied, 5105 is another top bull in the Caldwell sire group.



BA 5105M

BW	ADJ 205	ADJ 365	BW	WW	YW	MK	CED	CEM	CW	MARB	REA	FT
92	691	1291	2.8	72	133	27	-1.0	-4.0	45	0.63	0.47	0.037

Emblynette 89'18 DAM





BA 5109M

106 BELVIN CALDWELL 5106

MALE #2418368 DECEMBER 31 2024 BA 5106M PEN 4

Sitz Resilient 10208

SHAW CALDWELL 11432

Tehama Mary Blackbird Dog4

Ellingson Profound 8155

PAHL RITA 123K

Limestone Rita X354

Sitz Stellar 726D

Sitz Miss Burgess 1856

Tehama Upward Y238

Tehama Mary Blackbird Y684

S Powerpoint WS 5503

EA RoseTTA 6157

Limestone Darkhorse U322

A Plus Rita 8050

BW	ADJ 205	ADJ 365	BW	WW	YW	MK	CED	CEM	CW	MARB	REA	FT
71	742	1239	0.2	72	124	21	8.0	5.0	43	0.58	0.32	0.056

109 BELVIN NAMESAKE 5109

MALE #2418380 DECEMBER 31 2024 BA 5109M PEN 1

Sitz Logo 12964

HEIKEN TRADEMARK 1018

JCH HKN Lucy 9397

Baldrige Vegas Go82

BELVIN MARYLEE 168'23

Belvin Marylee 105'12

Sitz Tebow 11860

Sitz Shauna 3152

JCH Chisum 7019

JCH Hazel 6155

Spring Cove Reno 4021

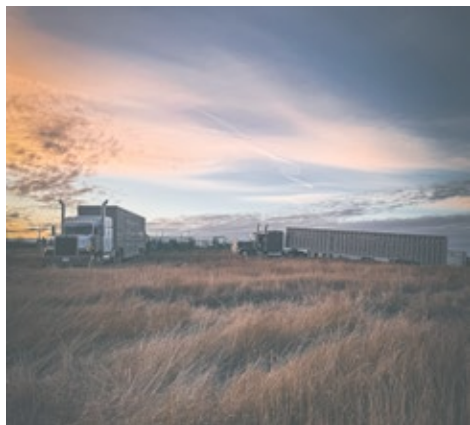
Baldrige Isabel Y69

Belvin Rebel 33'05

Belvin Marylee 90'05

BW	ADJ 205	ADJ 365	BW	WW	YW	MK	CED	CEM	CW	MARB	REA	FT
86	827	1396	0.7	78	144	22	2.0	8.0	56	0.79	0.55	0.002

Namesake 5109 is a soft made, loose hid feature of the Trademark sire group. High performing and gentle in his nature, 5109 is out of a power Vegas daughter, who has an excellent udder and weaned her first effort off at over 800 lbs. 5109 is a hard bull to miss in the pen, being as thick from one end to the other as any bull on offer.





BA 5110M

110 BELVIN KOKANEE 5110

MALE #2418387 DECEMBER 31 2024 BA 5110M PEN 2

Square B Atlantis 8060

BELVIN KOKANEE 2022

Belvin Georgina 14'14

Sitz Major 707F

BELVIN LADY BLOSSOM 71'21

Belvin Lady Blossom 158'19

SA V Rainfall 6846

Elbanna of Conanga 1209

Belvin Tres Marias Patron 205

Belvin Georgina 33'12

Sitz Stellar 726D

Sitz Lady 383D

HF Syndicate 65B

Belvin Lady Blossom 9'11

BW	ADJ 205	ADJ 365	BW	WW	YW	MK	CED	CEM	CW	MARB	REA	FT
98	771	1345	4.2	72	118	23	-2.0	-1.0	65	0.44	1.07	-0.027

Kokanee 5110 is one of the really impressive, performance-oriented bulls in the sale, patterning much like his sire. 5110 displayed early growth with added frame, substance, and red meat true to his REA and Carcass Weight figures. This big hiped bull is backed by a tight uddered, long bodied Major daughter who has been an asset to our program. A maternal brother is working at Lawrence Ranch.

111 BELVIN CALDWELL 5111

MALE #2418390 DECEMBER 31 2024 BA 5111M PEN 3

Sitz Resilient 10208

SHAW CALDWELL 11432

Tehama Mary Blackbird Dog4

Baldrige Mercenary Doo2

BELVIN LADY BLOSSOM 263'23

Belvin Lady Blossom 156'17

Sitz Stellar 726D

Sitz Miss Burgess 1856

Tehama Upward Y238

Tehama Mary Blackbird Y684

EF Commando 1366

Baldrige Rachel A029

Wiwa Creek Monarch 248'12

Belvin Lady Blossom 42'10

BW	ADJ 205	ADJ 365	BW	WW	YW	MK	CED	CEM	CW	MARB	REA	FT
80	762	1227	0.1	47	87	36	7.0	10.0	29	0.78	0.31	0.059

112 BELVIN REVIVAL 5112

MALE #2418392 JANUARY 01 2025 BA 112N PEN 2

Woodhill Relevance

WOODHILL REVIVAL H028

Woodhill Evergreen A43-F039

Baldrige Mercenary Doo2

BELVIN GEORGINA 78'21

Belvin Georgina 45'17

Connealy Confidence Plus

Woodhill Blackbird X197-Z7

Basin Payweight 1682

Woodhill Evergreen Y10-A43

EF Commando 1366

Baldrige Rachel A029

HF Syndicate 65B

Belvin Georgina 21'15

BW	ADJ 205	ADJ 365	BW	WW	YW	MK	CED	CEM	CW	MARB	REA	FT
78	727	1315	-0.2	60	119	32	12.0	7.0	51	0.91	0.50	0.067



BA 5111M

117

BELVIN CALDWELL 5117

MALE #2418400 JANUARY 02 2025 BA 117N PEN 4

Sitz Resilient 10208

SHAW CALDWELL 11432

Tehama Mary Blackbird Dog4

Baldridge Discovery D121

BELVIN LADY BLOSSOM 164'21

Belvin Lady Blossom 112'14

Sitz Stellar 726D

Sitz Miss Burgess 1856

Tehama Upward Y238

Tehama Mary Blackbird Y684

Fortunes Conquest 224

Baldridge Lady X200

Ring Creek El Tigre 9X

Belvin Lady Blossom 29'08

BW	ADJ 205	ADJ 365	BW	WW	YW	MK	CED	CEM	CW	MARB	REA	FT
83	674	1117	-0.1	53	95	32	6.0	6.0	25	0.24	0.13	0.048



BA 119N

119

BELVIN LAWMAN 5119

MALE #2418425 JANUARY 02 2025 BA 119N PEN 2

S S Enforcer E812

RIVERBEND LAWMAN J053

Spruce Mtn Rita 8102

Tres Marias 8235 Metejon

BELVIN TRES MARIAS SURENA 6145

Tres Marias 7722 Credito 7212

Sydgen Enhance

S S Miss Daybreak K011 3K17

Baldridge Colonel C251

Black Gold Rita 527

SA V Heavy Hitter 6347

Tres Marias 6876 Porto 6226

Stratum 1333 Credito Discovery

Tres Marias 7212 Hornero 6140

BW	ADJ 205	ADJ 365	BW	WW	YW	MK	CED	CEM	CW	MARB	REA	FT
80	720	1242	-0.1	38	85	27	8.0	8.0	20	0.53	0.29	0.010



BA 123N

120

BELVIN LAWMAN 5120

MALE #2418426 JANUARY 02 2025 BA 120N PEN 2

S S Enforcer E812

RIVERBEND LAWMAN J053

Spruce Mtn Rita 8102

Baldridge Discovery D121

BELVIN LADY BLOSSOM 136'18

Belvin Lady Blossom 125'15

Sydgen Enhance

S S Miss Daybreak K011 3K17

Baldridge Colonel C251

Black Gold Rita 527

Fortunes Conquest 224

Baldridge Lady X200

Belvin Vector 202'12

Belvin Lady Blossom 55'09

BW	ADJ 205	ADJ 365	BW	WW	YW	MK	CED	CEM	CW	MARB	REA	FT
90	763	1196	0.1	59	110	24	5.0	6.0	41	0.61	0.93	-0.007

122

BELVIN CALDWELL 5122

MALE #2418428 JANUARY 02 2025 BA 122N PEN 6

Sitz Resilient 10208

SHAW CALDWELL 11432

Tehama Mary Blackbird Dog4

Baldridge Mercenary D002

BELVIN DUCHESS 271'23

Belvin Duchess 122'16

Sitz Stellar 726D

Sitz Miss Burgess 1856

Tehama Upward Y238

Tehama Mary Blackbird Y684

EF Commando 1366

Baldridge Rachel A029

Belvin Velasquez 203'11

Belvin Duchess 168'10

BW	ADJ 205	ADJ 365	BW	WW	YW	MK	CED	CEM	CW	MARB	REA	FT
63	649	1105	-4.2	35	69	35	16.0	14.0	17	0.57	0.56	0.028

123

BELVIN REVIVAL 5123

MALE #2418429 JANUARY 02 2025 BA 123N PEN 4

Woodhill Relevance

WOODHILL REVIVAL H028

Woodhill Evergreen A43-F039

Vermilion Reride F116

BELVIN LADY BLOSSOM 158'20

Belvin Lady Blossom 42'15

Connealy Confidence Plus

Woodhill Blackbird X197-Z7

Basin Payweight 1682

Woodhill Evergreen Y10-A43

Vermilion Re-ride

Vermilion Lucy 5087

HF El Tigre 28U

Belvin Lady Blossom 29'08

BW	ADJ 205	ADJ 365	BW	WW	YW	MK	CED	CEM	CW	MARB	REA	FT
86	713	1208	2.5	76	134	25	4.0	7.0	60	0.71	0.60	0.033

BA



BA 125N



BA 126N



Left to Right: Colton, Gavin, Brendyn – **Please call us with any questions about the bulls.**

125 BELVIN CALDWELL 5125

MALE #2418431 JANUARY 02 2025 BA 125N PEN 4

Sitz Resilient 10208

SHAW CALDWELL 11432

Tehama Mary Blackbird Dog4

Coleman Charlo 0256

BELVIN LADY BLOSSOM 146'20

Belvin Lady Blossom 14'09

Sitz Stellar 726D

Sitz Miss Burgess 1856

Tehama Upward Y238

Tehama Mary Blackbird Y684

O C C Paxton 730P

Bohi Abigale 6014

Belvin Rebel 33'05

Belvin Lady Blossom 22'02

BW	ADJ 205	ADJ 365	BW	WW	YW	MK	CED	CEM	CW	MARB	REA	FT
76	655	1210	-1.2	60	106	43	8.0	6.0	39	0.27	0.76	-0.016

126 BELVIN CALDWELL 5126

MALE #2418432 JANUARY 02 2025 BA 126N PEN 3

Sitz Resilient 10208

SHAW CALDWELL 11432

Tehama Mary Blackbird Dog4

LT Warden 8316

BELVIN BARBARA 201'21

WWF FA Barbara 2Y

Sitz Stellar 726D

Sitz Miss Burgess 1856

Tehama Upward Y238

Tehama Mary Blackbird Y684

Koupals B&B Titan 3013

LT Lucy 4078 TW

SA V Final Answer 0035

WWF Bismarck Barbara 18W

BW	ADJ 205	ADJ 365	BW	WW	YW	MK	CED	CEM	CW	MARB	REA	FT
68	759	1243	-1.7	67	119	32	12.0	12.0	48	0.74	1.05	0.009

129 BELVIN LIMIT UP 5129

MALE #2418435 JANUARY 03 2025 BA 129N PEN 6

Hoover No Doubt

HART LIMIT UP 0506

Hart Whitney 3206

HF Junction 18B

BELVIN HEMBRA 1'16

Belvin Tres Marias Hembra 8314

Mogck Bullseye

Miss Blackcap Ellston J2

Connealy Cavalry 1149

Hart Whitney 0244

Young Dale Yohann 39Y

HF Elsiemere 106W

Tres Marias 8565 Cumbiero 7832

Tres Marias 6932 Zorzal 6546

BW	ADJ 205	ADJ 365	BW	WW	YW	MK	CED	CEM	CW	MARB	REA	FT
78	616	1061	-1.9	28	52	23	10.0	11.0	8	0.41	0.18	-0.011

131 COUL VEGAS 5131

MALE #2418437 JANUARY 03 2025 COUL 131N PEN 6

Spring Cove Reno 4021

BALDRIDGE VEGAS G082

Baldrige Isabel Y69

Baldrige Discovery D121

COUL KATE 228'21

Coul Tres Marias Kate 152'15

KM Broken Bow 002

Spring Cove Liza 021

Styles Upgrade J59

Baldrige Isabel T935

Fortunes Conquest 224

Baldrige Lady X200

Tres Marias 6301 Zorzal

Tres Marias 7048 Junior 5746

BW	ADJ 205	ADJ 365	BW	WW	YW	MK	CED	CEM	CW	MARB	REA	FT
91	693	1090	1.5	67	118	24	5.0	5.0	43	0.80	0.31	0.020

BA



BA 134N

134 BELVIN KOKANEE 5134

MALE #2418440 JANUARY 04 2025 BA 134N PEN 3

Square B Atlantis 8060

BELVIN KOKANEE 2022

Belvin Georgina 14'14

Baldrige Discovery D121

BELVIN LADY BLOSSOM 146'21

Belvin Lady Blossom 23'12

SA V Rainfall 6846

Elbanna of Conanga 1209

Belvin Tres Marias Patron 205

Belvin Georgina 33'12

Fortunes Conquest 224

Baldrige Lady X200

SA V Pioneer 7301

Belvin Lady Blossom 62'06

BW	ADJ 205	ADJ 365	BW	WW	YW	MK	CED	CEM	CW	MARB	REA	FT
74	749	1213	2.8	67	115	25	1.0	-4.0	39	0.56	0.46	0.041

TWIN.

135 BELVIN KOKANEE 5135

MALE #2418441 JANUARY 04 2025 BA 135N PEN 3

Square B Atlantis 8060

BELVIN KOKANEE 2022

Belvin Georgina 14'14

Baldrige Discovery D121

BELVIN LADY BLOSSOM 146'21

Belvin Lady Blossom 23'12

SA V Rainfall 6846

Elbanna of Conanga 1209

Belvin Tres Marias Patron 205

Belvin Georgina 33'12

Fortunes Conquest 224

Baldrige Lady X200

SA V Pioneer 7301

Belvin Lady Blossom 62'06

BW	ADJ 205	ADJ 365	BW	WW	YW	MK	CED	CEM	CW	MARB	REA	FT
72	697	1162	3.1	70	113	26	1.0	-1.0	45	0.46	0.62	0.040

TWIN.



BA 135N

136 BELVIN CALDWELL 5136

MALE #2418442 JANUARY 04 2025 BA 136N PEN 3

Sitz Resilient 10208

SHAW CALDWELL 11432

Tehama Mary Blackbird D094

Baldrige Discovery D121

BELVIN LADY BLOSSOM 6'20

Belvin Lady Blossom 205'12

Sitz Stellar 726D

Sitz Miss Burgess 1856

Tehama Upward Y238

Tehama Mary Blackbird Y684

Fortunes Conquest 224

Baldrige Lady X200

SA V Pioneer 7301

Belvin Lady Blossom 37'01

BW	ADJ 205	ADJ 365	BW	WW	YW	MK	CED	CEM	CW	MARB	REA	FT
70	681	1236	0.4	65	110	35	7.0	8.0	41	0.80	0.70	0.031



BA 136N



137

BELVIN CRAFTSMAN 5137

MALE #2418443 JANUARY 04 2025 BA 137N PEN 6

Sitz Resilient 10208

CONNEALY CRAFTSMAN

Black Cathy of Conanga 8521

HF Syndicate 65B

BELVIN 3E GEORGINA 30'16

Belvin Georgina 14'14

Sitz Stellar 726D

Sitz Miss Burgess 1856

Connealy Niobrara 5451

Black Carla of Conanga 450

HF Syndicate 213Z

HF Blackbird 97S

Belvin Tres Marias Patron 205

Belvin Georgina 33'12

BW	ADJ 205	ADJ 365	BW	WW	YW	MK	CED	CEM	CW	MARB	REA	FT
80	665	1097	-1.5	54	94	29	11.0	11.0	40	0.37	0.43	0.080

BA 137N

138

BELVIN CRAFTSMAN 5138

MALE #2418444 JANUARY 04 2025 BA 138N PEN 2

Sitz Resilient 10208

CONNEALY CRAFTSMAN

Black Cathy of Conanga 8521

HF Syndicate 65B

BELVIN GEORGINA 81'16

Belvin Georgina 95'14

Sitz Stellar 726D

Sitz Miss Burgess 1856

Connealy Niobrara 5451

Black Carla of Conanga 450

HF Syndicate 213Z

HF Blackbird 97S

Belvin Velasquez 203'11

Belvin Georgina 109'08

BW	ADJ 205	ADJ 365	BW	WW	YW	MK	CED	CEM	CW	MARB	REA	FT
92	774	1206	2.2	69	114	26	1.0	12.0	59	0.44	0.77	0.038

139

BELVIN NASCAR 5139

MALE #2418445 JANUARY 04 2025 BA 139N PEN 3

Sitz Resilient 10208

SHAW CALDWELL 11432

Tehama Mary Blackbird D094

Musgrave Sky High 1535

BELVIN LADY BLOSSOM 130'19

Belvin Lady Blossom 48'13

Sitz Stellar 726D

Sitz Miss Burgess 1856

Tehama Upward Y238

Tehama Mary Blackbird Y684

Musgrave Big Sky

Flag Queen W 00649

Belvin Warrior 6'09

Belvin Lady Blossom 51'07

Nascar 5139 is a top Caldwell son and a true sale feature. Much like his sire he is very complete with added dimension and dense muscle, coupled with a very attractive and eye-catching phenotype. The Sky High daughters have exceeded our expectation over time, making exceptional cows. They are the kind you would want hundreds of with quiet dispositions, tight and level udders, good feet and added capacity. Maternal brothers to 5139 include a son at Gillespie's 2L Ranch and a Herd Sire for Ferme Gagnon.



BA 139N

BW	ADJ 205	ADJ 365	BW	WW	YW	MK	CED	CEM	CW	MARB	REA	FT
82	657	1238	0.1	59	104	26	9.0	10.0	37	0.78	0.63	0.034



141 BELVIN NORTH FORK 5141

MALE #2418447 JANUARY 04 2025 BA 141N PEN 1

Sitz Resilient 10208

SHAW CALDWELL 11432

Tehama Mary Blackbird Dog4

Belvin May City 0136

BELVIN GEORGINA 142'22

Belvin Georgina 253'20

Sitz Stellar 726D

Sitz Miss Burgess 1856

Tehama Upward Y238

Tehama Mary Blackbird Y684

Vermilion Reride F116

Belvin Georgina 121'17

Poss Maverick

Belvin Georgina 81'16

BW	ADJ 205	ADJ 365	BW	WW	YW	MK	CED	CEM	CW	MARB	REA	FT
84	758	1291	1.8	70	116	26	3.0	3.0	48	0.50	1.07	-0.025

Length, muscle, shape, structure and eye appeal make North Fork 5141 a potential sale topper. He combines every trait that has made Caldwell so valuable to us. Our \$60,000 High Seller last year to Richmond Ranch was a Caldwell son from a May City daughter, making him a 3/4 brother to 5141. Both bulls are very similar in their type, as Caldwell and May City have crossed very well together. The bottom side of 5141's pedigree is populated with some of the best members of our foundation Georgina cow family. 5141 is big nuttred and is one of the top bulls in the sale for REA, which you can see when looking at him over his top. An outstanding bull, 5141 is worth the trip to see.

144 BELVIN TRADEMARK 5144

MALE #2418449 JANUARY 04 2025 BA 144N PEN 2

Sitz Logo 12964

HEIKEN TRADEMARK 1018

JCH HKN Lucy 9397

Riverbend Everest H1231

BELVIN QUEEN GEM 202'23

Belvin Queen Gem 4'18

Sitz Tebow 11860

Sitz Shauna 3152

JCH Chisum 7019

JCH Hazel 6155

S S Niagara Z29

Riverbend Rita D1008

EF Commando 1366

Belvin Queen Gem 75'16

BW	ADJ 205	ADJ 365	BW	WW	YW	MK	CED	CEM	CW	MARB	REA	FT
79	801	1287	1.0	72	118	24	7.0	3.0	41	0.57	0.76	-0.034

Marksman 4063, 3/4 BROTHER TO NORTH FORK 5141
\$60,000 HIGH SELLER IN 2025 SALE TO RICHMOND RANCH





148 BELVIN NEXUS 5148

MALE #2418453 JANUARY 05 2025 BA 148N PEN 1

Sitz Resilient 10208

SHAW CALDWELL 11432

Tehama Mary Blackbird D094

Woodhill Revival H028

BELVIN LADY BLOSSOM 133'23

Belvin Lady Blossom 53'19

Sitz Stellar 726D

Sitz Miss Burgess 1856

Tehama Upward Y238

Tehama Mary Blackbird Y684

Woodhill Relevance

Woodhill Evergreen A43-F039

Baldrige Discovery D121

Belvin Lady Blossom 95'16

BW	ADJ 205	ADJ 365	BW	WW	YW	MK	CED	CEM	CW	MARB	REA	FT
74	795	1383	-0.4	67	120	32	6.0	7.0	45	0.51	0.96	0.015

Nexus 5148 is a standout herdsire candidate, and one of the top Caldwell sons we've raised. Attractive, alert, stout made, packed full of muscle and good footed, 5148 can match up with any bull for phenotype. 5148 is solid for calving ease, while showing top end growth in a moderate framed package. His WW and YW ratios are 112 and 113. We are really excited for our Revival daughters, as their femininity, type and udder quality are exceptional. The dam of 5148 may be the best Revival daughter to date, while his maternal grandam is also trending towards being a donor cow. The feature lot 243 bull this year is a maternal sibling to the dam of 5148. A hard bull to fault, 5148 is an awesome combination of good looks, balanced EPD's and maternal power.



150 BELVIN REVIVAL 5150

MALE #2418455 JANUARY 05 2025 BA 150N PEN 3

Woodhill Relevance

WOODHILL REVIVAL H028

Woodhill Evergreen A43-F039

Sitz Major 707F

BELVIN LADY BLOSSOM 126'22

Belvin Lady Blossom 130'19

Connealy Confidence Plus

Woodhill Blackbird X197-Z7

Basin Payweight 1682

Woodhill Evergreen Y10-A43

Sitz Stellar 726D

Sitz Lady 383D

Musgrave Sky High 1535

Belvin Lady Blossom 48'13

BW	ADJ 205	ADJ 365	BW	WW	YW	MK	CED	CEM	CW	MARB	REA	FT
80	711	1213	-1.3	60	109	17	10.0	13.0	47	1.13	0.65	0.082



BA 150N

151 BELVIN VEGAS 5151

MALE #2436264 JANUARY 07 2025 BA 151N PEN 3

Spring Cove Reno 4021

BALDRIDGE VEGAS G082

Baldrige Isabel Y69

Belvin May City 0136

BELVIN LADY 500'22

Belvin Lady 218'20

KM Broken Bow 002

Spring Cove Liza 021

Styles Upgrade J59

Baldrige Isabel T935

Vermilion Reride F116

Belvin Georgina 121'17

Baldrige Discovery D121

Belvin Lady 58'12

BW	ADJ 205	ADJ 365	BW	WW	YW	MK	CED	CEM	CW	MARB	REA	FT
87	848	1325	2.1	64	110	26	1.0	4.5				



BA 151N

152 BELVIN KOKANEE 5152

MALE #2418456 JANUARY 06 2025 BA 152N PEN 3

Square B Atlantis 8060

BELVIN KOKANEE 2022

Belvin Georgina 14'14

Baldrige Discovery D121

BELVIN GEORGINA 192'22

Belvin Georgina 81'16

SA V Rainfall 6846

Elbanna of Conanga 1209

Belvin Tres Marias Patron 205

Belvin Georgina 33'12

Fortunes Conquest 224

Baldrige Lady X200

HF Syndicate 65B

Belvin Georgina 95'14

BW	ADJ 205	ADJ 365	BW	WW	YW	MK	CED	CEM	CW	MARB	REA	FT
103	759	1262	5.2	72	123	23	-7.0	5.0	48	0.37	0.36	0.033



BA 152N

154 BELVIN CALDWELL 5154

MALE #2418458 JANUARY 06 2025 BA 154N PEN 3

Sitz Resilient 10208

SHAW CALDWELL 11432

Tehama Mary Blackbird D094

Belvin May City 0136

BELVIN LADY BLOSSOM 41'23

Belvin Lady Blossom 112'14

Sitz Stellar 726D

Sitz Miss Burgess 1856

Tehama Upward Y238

Tehama Mary Blackbird Y684

Vermilion Reride F116

Belvin Georgina 121'17

Ring Creek El Tigre 9X

Belvin Lady Blossom 29'08

BW	ADJ 205	ADJ 365	BW	WW	YW	MK	CED	CEM	CW	MARB	REA	FT
74	709	1188	1.0	66	111	24	8.0	5.0	42	0.41	1.05	0.012



BA 154N



156 BELVIN LIMIT UP 5156

MALE #2418459 JANUARY 06 2025 BA 156N PEN 2

Hoover No Doubt

HART LIMIT UP 0506

Hart Whitney 3206

Musgrave Sky High 1535

BELVIN DUCHESS 70'19

Remitall Duchess 544U

Mogck Bullseye

Miss Blackcap Ellston J2

Connealy Cavalry 1149

Hart Whitney 0244

Musgrave Big Sky

Flag Queen W 00649

Remitall H Rachis 21R

Remitall Duchess 1L

BW	ADJ 205	ADJ 365	BW	WW	YW	MK	CED	CEM	CW	MARB	REA	FT
96	750	1266	4.4	68	109	26	-1.0	8.0	42	0.61	0.53	0.024

157 BELVIN LIMIT UP 5157

MALE #2418460 JANUARY 06 2025 BA 157N PEN 4

Hoover No Doubt

HART LIMIT UP 0506

Hart Whitney 3206

Belvin Velasquez 203'11

BELVIN DUCHESS 122'16

Belvin Duchess 168'10

Mogck Bullseye

Miss Blackcap Ellston J2

Connealy Cavalry 1149

Hart Whitney 0244

S A V Bismarck 5682

Belvin Lady Blossom 31'96

Belvin Panther 21'04

Belvin Duchess 30'01

BW	ADJ 205	ADJ 365	BW	WW	YW	MK	CED	CEM	CW	MARB	REA	FT
82	683	1166	-0.6	46	82	28	11.0	13.0	40	0.38	0.59	0.023

159 BELVIN LAWMAN 5159

MALE #2418462 JANUARY 06 2025 BA 159N PEN 2

S S Enforcer E812

RIVERBEND LAWMAN J053

Spruce Mtn Rita 8102

Baldrige Mercenary Doo2

BELVIN MISS MORRISON 75'19

Belvin Miss Morrison 29'15

Sydgen Enhance

S S Miss Daybreak K011 3K17

Baldrige Colonel C251

Black Gold Rita 527

EF Commando 1366

Baldrige Rachel A029

HF El Tigre 28U

Remitall Miss Morrison 591U

Lawman 5159 is a stout, dense made Lawman son who compliments this impressive sire group well. 5159 is packed full of muscle and offers a strong combination of MARB and REA with figures in the top percentiles of the breed for both. The Mercenary females have become a staple in our program; they are easy fleshing females with high milk flow and inject proven carcass merit and calving ease. A maternal sister was selected as a sale feature in our 2024 Female Sale by Cowtrax, and a brother was selected in our 2025 bull sale by East & West Ranching Co. Ltd.



BA 159N

BW	ADJ 205	ADJ 365	BW	WW	YW	MK	CED	CEM	CW	MARB	REA	FT
98	784	1275	3.4	76	124	18	3.0	2.0	65	0.72	1.12	-0.009



161 BELVIN NOTRE DAME 5161

MALE #2428359 JANUARY 07 2025 BA 161N PEN 1

Poss Maverick

BELVIN HIGHMORE 0330

Belvin 3E Black Angel 3'17

Belvin Velasquez 203'11

BELVIN LADY BLOSSOM 21'14

Belvin Lady Blossom 54'12

Basin Payweight 1682

Poss Pride 5163

Soo Line Motive 9016

Werner Black Angel 1299

S A V Bismarck 5682

Belvin Lady Blossom 31'96

Belvin Tres Marias Patron 205

Belvin Lady Blossom 45'10

BW	ADJ 205	ADJ 365	BW	WW	YW	MK	CED	CEM	CW	MARB	REA	FT
84	829	1403	3.1	67	113	24	4.0	11.0	56	0.62	0.84	-0.019

Notre Dame 5161 will be one of the intriguing bulls to sell all spring with his performance, dense muscle, soundness, and structural integrity. This imposing bull is the epitome of what we are striving to produce with strong growth, end product merit, foot quality, fertility, and maternal function, in an athletic, free moving package. The dam on 5161 represents the Lady Blossom cow family which has been a staple in our program from the start. She was perfect uddered, big bodied and angular in her makeup. The Lady Blossom 21'14 female has a strong production record with natural born sons at East & West Ranching Co. Ltd., IL Ranch. Flying E Rancho and Wheatland Colony. (EMBRYO TRANSFER).

Black Angel 3'17 PATERNAL GRAND-DAM



Highmore 0330 SIRE



Velasquez 203'11 MATERNAL GRAND-SIRE





BA 162N

162 BELVIN NEW LIMIT 5162

MALE #2418464 JANUARY 07 2025 BA 162N PEN 1

Hoover No Doubt

HART LIMIT UP 0506

Hart Whitney 3206

Montana Octane 6121

BELVIN LADY BLOSSOM 69'19

Belvin Lady Blossom 44'14

Mogck Bullseye

Miss Blackcap Ellston J2

Connealy Cavalry 1149

Hart Whitney 0244

JMB Traction 292

K C F Miss Absolute A198

S A V Pioneer 7301

Belvin Lady Blossom 37'01

BW	ADJ 205	ADJ 365	BW	WW	YW	MK	CED	CEM	CW	MARB	REA	FT
78	711	1143	0.3	59	92	24	5.0	6.0	32	0.48	0.73	-0.033

Roll Call 3162

MATERNAL BROTHER



New Limit 5162 adds to the consistent type and kind offered by Limit Up, with breed character, muscle density and base width. This attractive made bull combines modest birth weight figures with maternal cow power stacking up the Hart Whitney donor female with Lady Blossom 44'14, who produced 10 sale bulls through our program both naturally and via ET. A maternal brother sold as a sale feature in 2024 to Rust Mountain View Ranch.

167 BELVIN REVIVAL 5167

MALE #2418480 JANUARY 07 2025 BA 167N PEN 6

Woodhill Relevance

WOODHILL REVIVAL H028

Woodhill Evergreen A43-F039

Square B Atlantis 8060

BELVIN FOREVER LADY 96'22

EXAR Traveler 1121

Connealy Confidence Plus

Woodhill Blackbird X197-Z7

Basin Payweight 1682

Woodhill Evergreen Y10-A43

S A V Rainfall 6846

Elbanna of Conanga 1209

S A V Bismarck 5682

WCR Miss Traveler K225

BW	ADJ 205	ADJ 365	BW	WW	YW	MK	CED	CEM	CW	MARB	REA	FT
80	656	1189	-0.2	48	93	29	7.0	6.0	40	1.20	0.66	0.070

169 BELVIN ROLL CALL 5169

MALE #2418482 JANUARY 07 2025 BA 169N PEN 6

Brooking Firebrand 6068

BROOKING ROLL CALL 9045

Brooking Beauty 333

Baldrige Mercenary Doo2

BELVIN LADY BLOSSOM 32'22

Belvin Lady Blossom 57'20

Brooking Bank Note 4040

Brooking Annie K 390

S A V Harvester 0338

TLA Beauty 6R

EF Commando 1366

Baldrige Rachel A029

Poss Maverick

Belvin Lady Blossom 98'18

BW	ADJ 205	ADJ 365	BW	WW	YW	MK	CED	CEM	CW	MARB	REA	FT
79	689	1153	0.0	45	79	27	9.0	10.0	22	0.57	0.24	0.050



BA 172N

BW	ADJ 205	ADJ 365	BW	WW	YW	MK	CED	CEM	CW	MARB	REA	FT
85	753	1239	0.4	68	120	17	7.0	8.0	44	0.51	0.25	0.052

172 BELVIN REVIVAL 5172

MALE #2418485 JANUARY 07 2025 BA 172N PEN 3

Woodhill Relevance

WOODHILL REVIVAL H028

Woodhill Evergreen A43-F039

Square B Atlantis 8060

BELVIN LADY BLOSSOM 130'22

Belvin Lady Blossom 54'12

Connealy Confidence Plus

Woodhill Blackbird X197-Z7

Basin Payweight 1682

Woodhill Evergreen Y10-A43

S A V Rainfall 6846

Elbanna of Conanga 1209

Belvin Tres Marias Patron 205

Belvin Lady Blossom 45'10

Revival 5172 is one of the feature Revival sons in the sale, who has the bold shape and attractive look that is typical of the sire group. The dam of 5172 is a picture-perfect Atlantis daughter, who is moderate framed and feminine, with a great udder and added capacity.

His Grand Dam earned elite status in the CAA and adds a level of predictable maternal power to this future cow maker. This modest birth weight bull is very balanced on both paper and in the flesh; he will be a very versatile breeding tool and can fit any program. A brother sold in last year's sale as a feature to Sunny Grove Angus.

174 BELVIN NELSON 5174

MALE #2418487 JANUARY 07 2025 BA 174N PEN 1

Woodhill Relevance

WOODHILL REVIVAL H028

Woodhill Evergreen A43-F039

Hart Limit Up 0506

BELVIN QUEEN 219'23

Belvin Queen 103'21

Connealy Confidence Plus

Woodhill Blackbird X197-Z7

Basin Payweight 1682

Woodhill Evergreen Y10-A43

Hoover No Doubt

Hart Whitney 3206

Poss Maverick

Belvin Queen 63'15

Nelson 5174 is one of the very balanced and complete Revival sons in the offering, pairing together modest birth weight and ideal performance, with strong carcass merit and feed efficiency. This attractive made bull has been noted from a young age, along side his ideal, Limit Up sired, first calving dam. Look to 5174 to inject carcass merit while leaving an excellent set of daughters who have reduced mature size and longevity built in. With a WW index of 109 and modest birth weight figures, 5174 will add value to any program.



BA 5174N

BW	ADJ 205	ADJ 365	BW	WW	YW	MK	CED	CEM	CW	MARB	REA	FT
76	798	1360	0.3	70	121	19	5.0	10.0	59	0.59	1.12	0.049

175

BELVIN CALDWELL 5175

MALE #2418488 JANUARY 08 2025 BA 175N PEN 4

*Sitz Resilient 10208***SHAW CALDWELL 11432***Tehama Mary Blackbird Dog4**Woodhill Revival Ho28***BELVIN LADY BLOSSOM 76'23***Belvin Lady Blossom 167'17**Sitz Stellar 726D**Sitz Miss Burgess 1856**Tehama Upward Y238**Tehama Mary Blackbird Y684**Woodhill Relevance**Woodhill Evergreen A43-F039**HF Junction 18B**Belvin Lady Blossom 145'14*

BW	ADJ 205	ADJ 365	BW	WW	YW	MK	CED	CEM	CW	MARB	REA	FT
75	737	1345	-0.5	74	146	37	9.0	10.0	74	0.86	0.76	0.039



BA 175N

176

BELVIN LIMIT UP 5176

MALE #2418489 JANUARY 08 2025 BA 176N PEN 4

*Hoover No Doubt***HART LIMIT UP 0506***Hart Whitney 3206**Baldrige Mercenary Doo2***BELVIN ERICA 98'19***Belvin Erica 106'15**Mogck Bullseye**Miss Blackcap Ellston J2**Connealy Cavalry 1149**Hart Whitney 0244**EF Commando 1366**Baldrige Rachel Ao29**Duralta 56S Yellowstone 136X**Belvin Erica 76'11*

BW	ADJ 205	ADJ 365	BW	WW	YW	MK	CED	CEM	CW	MARB	REA	FT
80	675	1191	0.0	48	75	32	4.0	12.0	35	1.06	0.41	0.020

Limit Up 5176 exhibits the usual body type of a standard Limit Up son, as he is dense made, heavy muscled and good footed. 5175 also possesses a marbling EPD in the top 5% of the breed. His Mercenary sired dam has been a very productive female, with a feature son selling to Bartel Cattle Corp, and daughters selling to Lake Creek Ranch and Chance Scott.



BA 176N



BA 181N

181 BELVIN NATURAL 5181

MALE #2418494 JANUARY 08 2025 BA 181N PEN 1

Sitz Resilient 10208

SHAW CALDWELL 11432

Tehama Mary Blackbird D094

SAC Conversation

BELVIN LADY DI 189'17

Belvin Lady Di 22'03

Sitz Stellar 726D

Sitz Miss Burgess 1856

Tehama Upward Y238

Tehama Mary Blackbird Y684

Silveiras Conversion 8064

Laflins Farrah 0250

Belvin Kingpin 24'00

Belvin Lady Di 32'00

Natural 5181 is another elite Caldwell son who is very athletic and sound structured with an attractive look. His Conversation sired dam is a top female noted for exceptional foot and udder quality, fertility and ideal frame size. This big REA bull offers strong maternal merit with reduced mature size and lower dry matter intake; he will add longevity and predictability to any cowherd. Maternal brothers to 5181 are at East & West Ranching Co. Ltd, Cluny Colony, and Lawrence Ranch.

BW	ADJ 205	ADJ 365	BW	WW	YW	MK	CED	CEM	CW	MARB	REA	FT
84	710	1188	2.6	52	94	35	-1.0	1.0	26	0.37	0.93	-0.004

182 BELVIN LIMIT UP 5182

MALE #2418495 JANUARY 08 2025 BA 182N PEN 4

Hoover No Doubt

HART LIMIT UP 0506

Hart Whitney 3206

HF Junction 18B

BELVIN LADY 157'16

Ring Creek Super Lady 24z

Mogck Bullseye

Miss Blackcap Ellston J2

Connealy Cavalry 1149

Hart Whitney 0244

Young Dale Yohann 39y

HF Elsiemere 106w

SH Superman 0159

Lady of Ring Creek 45x

BW	ADJ 205	ADJ 365	BW	WW	YW	MK	CED	CEM	CW	MARB	REA	FT
100	730	1220	3.3	60	97	27	1.0	8.0	39	0.30	0.52	-0.039



BA 182N



184 BELVIN LAWMAN 5184

MALE #2418497 JANUARY 08 2025 BA 184N PEN 2

S S Enforcer E812

RIVERBEND LAWMAN J053

Spruce Mtn Rita 8102

B C Lookout 7024

BELVIN LADY BLOSSOM 16'16

Belvin Lady Blossom 35'14

Syngen Enhance

S S Miss Daybreak K011 3K17

Baldrige Colonel C251

Black Gold Rita 527

O C C Legend 616L

Gibbet Hill Mignonne E37

Belvin Tres Marias Patron 205

Belvin Lady Blossom 14'09

BW	ADJ 205	ADJ 365	BW	WW	YW	MK	CED	CEM	CW	MARB	REA	FT
70	682	1218	-1.9	44	90	32	4.0	3.0	21	0.70	0.51	0.003

188 BELVIN CRAFTSMAN 5188

MALE #2418510 JANUARY 09 2025 BA 188N PEN 2

Sitz Resilient 10208

CONNEALY CRAFTSMAN

Black Cathy of Conanga 8521

HF Junction 18B

BELVIN QUEEN 824'18

JS Queen 101

Sitz Stellar 726d

Sitz Miss Burgess 1856

Connealy Niobrara 5451

Black Carla of Conanga 450

Young Dale Yohann 39y

HF Elsiemere 106w

HF Tiger 5T

JS Queen 947

BW	ADJ 205	ADJ 365	BW	WW	YW	MK	CED	CEM	CW	MARB	REA	FT
86	805	1385	0.2	65	114	34	4.0	8.0	58	0.49	1.08	0.042

5188 is a feature son of Craftsman, the #1 Registration sire in the American Angus Association for 2025. This high-performance bull has been admired at every age for his length, muscle shape, and overall presence. 5188 is very correct and travels with ease on great feet and legs. This high caliber bull combines strong growth figures, increased REA size and carcass weight. His dam has been designated an Elite female in the Canadian Angus for her strong and consistent production record. She has produced multiple sale features over the years and served as a donor female for us this past summer. Three daughters have gone out to work for Sunrise Ranching Co, Blairs West and Coul Angus, while a son works for IL Ranch.



BA 188N

top stock



BA 192N

192 BELVIN NIEUWENDYK 5192

MALE #2418514 JANUARY 10 2025 BA 192N PEN 1

Woodhill Relevance

WOODHILL REVIVAL H028

Woodhill Evergreen A43-F039

Square B Atlantis 8060

BELVIN ANDRIA 148'22

Belvin Tres Marias Andria 7313

Connealy Confidence Plus

Woodhill Blackbird X197-Z7

Basin Payweight 1682

Woodhill Evergreen Y10-A43

SA V Rainfall 6846

Elbanna of Conanga 1209

Tres Marias 6301 Zorzal

Tres Marias 7358 LA Andria T/E

BW	ADJ 205	ADJ 365	BW	WW	YW	MK	CED	CEM	CW	MARB	REA	FT
79	788	1357	0.4	64	108	25	5.0	7.0	43	0.87	0.39	0.040

An elite Revival son that matches this large sire group to a tee. 5192 is a long bodied, strong topped bull, with a moderate BW and strong performance figures. 5192 represents the Andria cow family who traces back to embryos brought up from Argentina that have been very successful. The dam of 5192 is a top Atlantis daughter who has a perfect udder and is highly fertile, calving in the first cycle through her first three calves. Very maternally charged pedigree here combining the strength of the renowned Woodhill cow herd with breed greats like Zorzal, Rainfall, and Consensus.

194 BELVIN CALDWELL 5194

MALE #2418516 JANUARY 10 2025 BA 194N PEN 4

Sitz Resilient 10208

SHAW CALDWELL 11432

Tehama Mary Blackbird D094

Belvin May City 0136

BELVIN MISSIE 102'23

KFC 839L Miss Legacy 019

Sitz Stellar 726D

Sitz Miss Burgess 1856

Tehama Upward Y238

Tehama Mary Blackbird Y684

Vermilion Reride F116

Belvin Georgina 121'17

O C C Legacy 839L

KFC 4532 Miss Rainmaker

BW	ADJ 205	ADJ 365	BW	WW	YW	MK	CED	CEM	CW	MARB	REA	FT
78	728	1295	1.6	61	103	29	2.0	3.0	38	0.08	0.53	0.024

Andria 148'22 DAM OF NIEUWENDYK 5192





BA 198N

198 BELVIN REVIVAL 5198

MALE #2418519 JANUARY 10 2025 BA 198N PEN 3

Woodhill Relevance

WOODHILL REVIVAL H028

Woodhill Evergreen A43-F039

Riverbend Lawman J053

BELVIN PRIDE 171'23

Duralta 8020 Pride 38H

Connealy Confidence Plus

Woodhill Blackbird X197-Z7

Basin Payweight 1682

Woodhill Evergreen Y10-A43

S S Enforcer E812

Spruce Mtn Rita 8102

Merit McLaren 8020F

Duralta 9C Pride 30F

BW	ADJ 205	ADJ 365	BW	WW	YW	MK	CED	CEM	CW	MARB	REA	FT
65	743	1249	0.2	65	116	31	10.0	13.0	49	0.84	0.60	0.062

Revival 5198 stood out as an early favorite alongside his first calving mother over the summer. His young Lawman dam is ideal in her type and is the kind we strive to produce. 5198 does it all as a heifer's first calf with a balanced data set for performance and maternal traits, earning him the top CBI (Combined) index in the offering. Fertility, marbling, milk, performance, negative BW, CED, docility, and structural correctness: 5198 checks all the boxes.



201 BELVIN REVIVAL 5201

MALE #2418525 JANUARY 10 2025 BA 201N PEN 2

Woodhill Relevance

WOODHILL REVIVAL H028

Woodhill Evergreen A43-F039

Sitz Major 707F

BELVIN QUEEN 144'22

Belvin Queen 144'10

Connealy Confidence Plus

Woodhill Blackbird X197-Z7

Basin Payweight 1682

Woodhill Evergreen Y10-A43

Sitz Stellar 726D

Sitz Lady 383D

Sunny Dynasty 13R

Belvin Queen 17'04

BW	ADJ 205	ADJ 365	BW	WW	YW	MK	CED	CEM	CW	MARB	REA	FT
98	847	1257	4.2	84	147	13	-3.0	4.0	71	0.49	0.75	0.023

BA

202 BELVIN CALDWELL 5202

MALE #2418526 JANUARY 11 2025 BA 202N PEN 4

Sitz Resilient 10208

SHAW CALDWELL 11432

Tehama Mary Blackbird Dog4

Sitz Major 707F

BELVIN LADY BLOSSOM 85'22

Belvin Lady Blossom 174'19

Sitz Stellar 726D

Sitz Miss Burgess 1856

Tehama Upward Y238

Tehama Mary Blackbird Y684

Sitz Stellar 726D

Sitz Lady 383D

Musgrave 316 Stunner

Belvin Lady Blossom 43'14

BW	ADJ 205	ADJ 365	BW	WW	YW	MK	CED	CEM	CW	MARB	REA	FT
70	729	1278	-1.7	74	128	31	12.0	10.0	57	0.19	0.94	0.031



BA 202N

203 BELVIN NASH 5203

MALE #2418528 JANUARY 11 2025 BA 203N PEN 1

Spring Cove Reno 4021

BALDRIDGE VEGAS G082

Baldrige Isabel Y69

Poss Maverick

BELVIN LADY DI 203'22

Belvin Lady Di 47'16

KM Broken Bow 002

Spring Cove Liza 021

Styles Upgrade J59

Baldrige Isabel T935

Basin Payweight 1682

Poss Pride 5163

KR Cash 4003

Belvin Lady Di 69'14

Nash 5203 is the powerhouse of the Vegas sire group with rugged design, extra scale, and body mass. 5203 has had a husky look from a young age at the side of his Maverick dam, with his added growth and masculine look. 5203 has a very performance-oriented data set with WW and YW figures in the top 1% of the CAA data base. This high-power cow bull will add highly marbled red meat and substance to his calves, along with elite efficiency. He will leave a set of feeder cattle second to none.

207 BELVIN LAWMAN 5207

MALE #2418691 JANUARY 11 2025 BA 207N PEN 4

S S Enforcer E812

RIVERBEND LAWMAN J053

Spruce Mtn Rita 8102

Musgrave Sky High 1535

BELVIN LADY BLOSSOM 86'19

Belvin Lady Blossom 205'12

Sydgen Enhance

S S Miss Daybreak K011 3K17

Baldrige Colonel C251

Black Gold Rita 527

Musgrave Big Sky

FLAG Queen W 00649

S A V Pioneer 7301

Belvin Lady Blossom 37'01

BW	ADJ 205	ADJ 365	BW	WW	YW	MK	CED	CEM	CW	MARB	REA	FT
100	610	1262	3.1	64	119	31	-1.0	-2.0	43	0.98	0.80	0.040



BA 203N

BW	ADJ 205	ADJ 365	BW	WW	YW	MK	CED	CEM	CW	MARB	REA	FT
103	818	1385	3.5	86	151	27	-1.0	11.0	67	1.13	0.51	-0.027



KT Ranches
top stock

208 BELVIN NOTORIOUS 5208

MALE #2418692 JANUARY 11 2025 BA 208N PEN 1

Hoover No Doubt

HART LIMIT UP 0506

Hart Whitney 3206

HF Syndicate 65B

BELVIN GEORGINA 121'17

Belvin Georgina 45'15

MOGCK Bullseye

Miss Blackcap Ellston J2

Connealy Cavalry 1149

Hart Whitney 0244

HF Syndicate 213Z

HF Blackbird 97S

Belvin Panic Switch

Belvin Georgina 60'00

Notorious 5208

Notorious 5208 is a herd sire by Limit Up. This sale feature is one of the very exciting bulls in the offering, being a maternal brother to Canadian Sires and Brooking Angus herd sire May City. His dam, Georgina 121'17, was selected as pick of our cow herd and is now owned with KT Ranches, where she serves as a donor female. 5208 has an imposing look with style, added muscle, soundness and breed character. This athletic, large scrotal bull is the total package with as much maternal strength as any. He is an impossible bull to miss in the pen.

BW	ADJ 205	ADJ 365	BW	WW	YW	MK	CED	CEM	CW	MARB	REA	FT
87	758	1307	1.4	61	98	16	7.0	17.0	43	0.49	1.12	-0.012

May City MATERNAL BROTHER



Georgina 121'17 DAM



Georgina 45'15 MATERNAL GRAND-DAM





BA 210N

210 BELVIN VEGAS 5210

MALE #2418695 JANUARY 11 2025 BA 210N PEN 6

Spring Cove Reno 4021

BALDRIDGE VEGAS G082

Baldrige Isabel Y69

Baldrige Alternative E125

BELVIN EMBLYNETTE 67'21

Belvin Emblynette 208'11

KM Broken Bow 002

Spring Cove Liza 021

Styles Upgrade J59

Baldrige Isabel T935

Poss Easy Impact 0119

Baldrige Blackbird A030

Belvin Rebel 33'05

S A V Emblynette 5486

BW	ADJ 205	ADJ 365	BW	WW	YW	MK	CED	CEM	CW	MARB	REA	FT
87	678	1045	0.1	56	101	18	4.0	4.0	27	0.62	0.53	-0.005

212 BELVIN LIMIT UP 5212

MALE #2418700 JANUARY 11 2025 BA 212N PEN 4

Hoover No Doubt

HART LIMIT UP 0506

Hart Whitney 3206

Duralta 56S Yellowstone 136X

BELVIN LADY BLOSSOM 116'16

Belvin Lady Blossom 160'11

Mogck Bullseye

Miss Blackcap Ellston J2

Connealy Cavalry 1149

Hart Whitney 0244

Minburn Yellowstone 56S

Duralta 32R Alliane 189U

Belvin Rebel 33'05

Belvin Lady Blossom 7'05

BW	ADJ 205	ADJ 365	BW	WW	YW	MK	CED	CEM	CW	MARB	REA	FT
80	713	1294	-0.7	38	75	27	7.0	13.0	29	0.44	0.27	0.031

Limit Up 5212 is an attractive bull who is noticed for his length of body, good feet, excellent hair and style. A light BW bull, 5212 is out of a proven and productive ten year old Yellowstone daughter, who has a long production record, with sons selling to Barrington Ranch (2), Harpur Ranch and East & West Ranching Co. Ltd.



BA 212N



BA 213N

213 BELVIN NOBLEMAN 5213

MALE #2418701 JANUARY 11 2025 BA 213N PEN 1

Sitz Resilient 10208

CONNEALY CRAFTSMAN

Black Cathy of Conanga 8521

HF Junction 18B

BELVIN 3E LADY HEATHER 58'17

Poplar MDWS Lady Heather 3w

Sitz Stellar 726D

Sitz Miss Burgess 1856

Connealy Niobrara 5451

Black Carla of Conanga 450

Young Dale Yohann 39Y

HF Elsiemere 106W

S A V Final Answer 0035

Poplar Mdws Lady Heather 28S

Junction 18B

MATERNAL GRAND-SIRE



Nobleman 5213 is a feature Craftsman son that is very complete and sound structured, with an attractive look. 5213 is a balanced trait bull that combines top maternal qualities and added docility. His dam is a tight uddered Junction daughter, who consistently calves early, maintains condition, and produces high quality offspring. She has two daughters retained in our program and 3 feature sons working for Tatalrose Ranch, and East & West Ranching Co. Ltd. (2)

BW	ADJ 205	ADJ 365	BW	WW	YW	MK	CED	CEM	CW	MARB	REA	FT
91	702	1205	1.6	57	109	28	-1.0	-3.0	41	0.57	0.62	0.028

215 BELVIN CALDWELL 5215

MALE #2418706 JANUARY 12 2025 BA 215N PEN 6

Sitz Resilient 10208

SHAW CALDWELL 11432

Tehama Mary Blackbird D094

Baldrige Vegas G082

BELVIN LADY BLOSSOM 149'21

Belvin Lady Blossom 46'18

Sitz Stellar 726D

Sitz Miss Burgess 1856

Tehama Upward Y238

Tehama Mary Blackbird Y684

Spring Cove Reno 4021

Baldrige Isabel Y69

JNJ Pokerface 10C

Belvin Lady Blossom 112'14

BW	ADJ 205	ADJ 365	BW	WW	YW	MK	CED	CEM	CW	MARB	REA	FT
74	654	1143	-0.6	57	110	30	5.0	6.0	42	0.87	0.66	0.023

216 BELVIN REVIVAL 5216

MALE #2418708 JANUARY 12 2025 IVY 216N PEN 6

Woodhill Relevance

WOODHILL REVIVAL H028

Woodhill Evergreen A43-F039

Sitz Major 707F

BELVIN LADY BLOSSOM 161'22

Belvin Lady Blossom 63'17

Connealy Confidence Plus

Woodhill Blackbird X197-Z7

Basin Payweight 1682

Woodhill Evergreen Y10-A43

Sitz Stellar 726D

Sitz Lady 383D

S A V Bismarck 5682

Belvin Lady Blossom 31'96

BW	ADJ 205	ADJ 365	BW	WW	YW	MK	CED	CEM	CW	MARB	REA	FT
66	644	1140	-2.8	48	86	15	17.0	13.0	20	0.68	0.76	0.079

217

BELVIN CALDWELL 5217

MALE #2418727 JANUARY 12 2025 BA 217N PEN 3

Sitz Resilient 10208

SHAW CALDWELL 11432

Tehama Mary Blackbird Dog4

HF Junction 18B

BELVIN EMBLYNETTE 62'18

Belvin Emblynette 64'14

Sitz Stellar 726D

Sitz Miss Burgess 1856

Tehama Upward Y238

Tehama Mary Blackbird Y684

Young Dale Yohann 39Y

HF Elsiemere 106W

Duralta 56S Yellowstone 136X

Belvin Emblynette 208'11

BW	ADJ 205	ADJ 365	BW	WW	YW	MK	CED	CEM	CW	MARB	REA	FT
80	685	1253	-0.5	52	102	30	3.0	8.0	27	0.38	0.16	0.057



BA 217N

218

BELVIN CRAFTSMAN 5218

MALE #2418731 JANUARY 12 2025 BA 218N PEN 3

Sitz Resilient 10208

CONNEALY CRAFTSMAN

Black Cathy of Conanga 8521

S A V Short Cut 6088

PERROT BLACKBIRD 45F

Town N Country Blackbird 37C

Sitz Stellar 726D

Sitz Miss Burgess 1856

Connealy Niobrara 5451

Black Carla of Conanga 450

S A V Cutting Edge 4857

S A V Emblynette 7415

S A V Angus Beef 3231

Town N Country Blackbird 7Z

BW	ADJ 205	ADJ 365	BW	WW	YW	MK	CED	CEM	CW	MARB	REA	FT
87	686	1222	2.5	54	94	27	4.0	5.0	46	0.91	0.83	0.068



BA 218N

221

BELVIN REVIVAL 5221

MALE #2418737 JANUARY 12 2025 BA 221N PEN 2

Woodhill Relevance

WOODHILL REVIVAL H028

Woodhill Evergreen A43-F039

Sitz Major 707F

BELVIN LASSIE 93'21

Belvin Lassie 143'13

Connealy Confidence Plus

Woodhill Blackbird X197-Z7

Basin Payweight 1682

Woodhill Evergreen Y10-A43

Sitz Stellar 726D

Sitz Lady 383D

Belvin Warrior 6'09

Belvin Lassie 13'06

BW	ADJ 205	ADJ 365	BW	WW	YW	MK	CED	CEM	CW	MARB	REA	FT
95	761	1290	3.0	64	112	25	-2.0	6.0	42	0.94	0.43	0.052



BA 221N

225

BELVIN LIMIT UP 5225

MALE #2418749 JANUARY 13 2025 BA 225N PEN 4

Hoover No Doubt

HART LIMIT UP 0506

Hart Whitney 3206

HF Junction 18B

BELVIN LADY BLOSSOM 167'17

Belvin Lady Blossom 145'14

Mogck Bullseye

Miss Blackcap Ellston J2

Connealy Cavalry 1149

Hart Whitney 0244

Young Dale Yohann 39Y

HF Elsiemere 106W

Belvin Velasquez 203'11

Belvin Lady Blossom 5'08

BW	ADJ 205	ADJ 365	BW	WW	YW	MK	CED	CEM	CW	MARB	REA	FT
96	712	1086	4.2	63	107	26	-6.0	4.0	45	0.48	0.79	-0.023

BA



BA 231N

229 BELVIN CALDWELL 5229

MALE #2418765 JANUARY 14 2025 BA 229N PEN 6

Sitz Resilient 10208

SHAW CALDWELL 11432

Tehama Mary Blackbird D094

Baldrige Vegas G082

BELVIN LADY BLOSSOM 47'21

Belvin Lady Blossom 55'18

Sitz Stellar 726D

Sitz Miss Burgess 1856

Tehama Upward Y238

Tehama Mary Blackbird Y684

Spring Cove Reno 4021

Baldrige Isabel Y69

Musgrave Sky High 1535

Belvin Lady Blossom 23'06

BW	ADJ 205	ADJ 365	BW	WW	YW	MK	CED	CEM	CW	MARB	REA	FT
77	711	1169	-1.1	64	118	33	10.0	6.0	40	0.54	0.29	0.056

231 BELVIN NAVY 5231

MALE #2418771 JANUARY 14 2025 BA 231N PEN 1

Woodhill Relevance

WOODHILL REVIVAL H028

Woodhill Evergreen A43-F039

Baldrige Vegas G082

BELVIN LADY BLOSSOM 265'23

Belvin Lady Blossom 95'15

Connealy Confidence Plus

Woodhill Blackbird X197-Z7

Basin Payweight 1682

Woodhill Evergreen Y10-A43

Spring Cove Reno 4021

Baldrige Isabel Y69

HF El Tigre 28U

Belvin Lady Blossom 12'04

BW	ADJ 205	ADJ 365	BW	WW	YW	MK	CED	CEM	CW	MARB	REA	FT
90	841	1377	3.3	83	148	26	0.0	0.0	58	0.75	0.38	0.072

Navy 5231 is a very eye appealing and balanced bull with great depth of body and structural correctness. With a big top, length, and fault free design, 5231 is an exciting herd sire prospect. Revival stamps his progeny with performance and style, making both males and females very sought after. 5231 offers one of the most impressive data sets in the offering with leading performance, conversion, and docility predictions all near the top of the breed. 5231 posted one of the top WW index's at 114 with an adjusted weight of 841 lbs as a heifers first calf.

241 BELVIN REVIVAL 5241

MALE #2418799 JANUARY 16 2025 BA 241N PEN 6

Woodhill Relevance

WOODHILL REVIVAL H028

Woodhill Evergreen A43-F039

Merit Sting 7047E

LOCK 7047 FOREVER LADY 104K

Eastondale Forever Lady 28'17

Connealy Confidence Plus

Woodhill Blackbird X197-Z7

Basin Payweight 1682

Woodhill Evergreen Y10-A43

Bar S Range Boss 4002

Merit Socialite 5121C

Sankeys Laramie 114

Eastondale Forever Lady 66'12

BW	ADJ 205	ADJ 365	BW	WW	YW	MK	CED	CEM	CW	MARB	REA	FT
78	667	1153	-2.1	52	84	25	12.0	6.0	21	0.51	0.14	0.084

BA



BA 243N

243 BELVIN NAUTICAL 5243

MALE #2418805 JANUARY 16 2025 BA 243N PEN 1

S S Enforcer E812

RIVERBEND LAWMAN J053

Spruce Mtn Rita 8102

Baldrige Discovery D121

BELVIN LADY BLOSSOM 53'19

Belvin Lady Blossom 95'16

Sydgen Enhance

S S Miss Daybreak K011 3K17

Baldrige Colonel C251

Black Gold Rita 527

Fortunes Conquest 224

Baldrige Lady X200

KR Cash 4003

Belvin Lady Blossom 48'13

BW	ADJ 205	ADJ 365	BW	WW	YW	MK	CED	CEM	CW	MARB	REA	FT
86	746	1236	1.3	50	89	32	2.0	3.0	26	0.66	0.43	0.016

Nautical 5243 is one of the intriguing bulls in the pen; he has a great look with lots of muscle, shape and hair, in a moderate, well-balanced package. His sire, Lawman, was selected from the Riverbend program for his completeness both phenotypically and genotypically, with the look of a herd bull and a very impressive and balanced set of figures for growth, carcass, and maternal. 5243 represents a very strong line of females with his dam, grand dam, and great grand dam being ideal cows with elite udder quality, strong feet, fleshing ability and quiet nature.

251 BELVIN CALDWELL 5251

MALE #2418860 JANUARY 18 2025 BA 251N PEN 6

Sitz Resilient 10208

SHAW CALDWELL 11432

Tehama Mary Blackbird D094

Baldrige Vegas G082

BELVIN BLACKBIRD 65'21

Bar-E-L Blackbird 27F

Sitz Stellar 726D

Sitz Miss Burgess 1856

Tehama Upward Y238

Tehama Mary Blackbird Y684

Spring Cove Reno 4021

Baldrige Isabel Y69

Ring Creek Flynn 25A

Bar-E-L Blackbird 76C

BW	ADJ 205	ADJ 365	BW	WW	YW	MK	CED	CEM	CW	MARB	REA	FT
74	650	1176	-2.0	55	92	37	10.0	8.0	32	0.69	0.73	0.044





BA 256N

256 BELVIN ROLL CALL 5256

MALE #2418873 JANUARY 19 2025 BA 256N PEN 4

Brooking Firebrand 6068
BROOKING ROLL CALL 9045
 Brooking Beauty 333

Poss Maverick
BELVIN QUEEN 103'21
 Belvin Queen 63'15

Brooking Bank Note 4040
 Brooking Annie K 390
 SA V Harvester 0338
 TLA Beauty 6R
 Basin Payweight 1682
 Poss Pride 5163
 Duralta 56S Yellowstone 136X
 Belvin Queen 144'10

BW	ADJ 205	ADJ 365	BW	WW	YW	MK	CED	CEM	CW	MARB	REA	FT
90	738	1340	1.6	50	92	33	0.0	-2.0	25	0.81	0.30	0.029

258 BELVIN LIMIT UP 5258

MALE #2418877 JANUARY 19 2025 BA 258N PEN 4

Hoover No Doubt
HART LIMIT UP 0506
 Hart Whitney 3206

HF Junction 18B
BELVIN LADY BLOSSOM 98'18
 Belvin Lady Blossom 37'15

Mogck Bullseye
 Miss Blackcap Ellston J2
 Connealy Cavalry 1149
 Hart Whitney 0244
 Young Dale Yohann 39Y
 HF Elsiemere 106W
 HF El Tigre 28U
 Belvin Lady Blossom 14'09

BW	ADJ 205	ADJ 365	BW	WW	YW	MK	CED	CEM	CW	MARB	REA	FT
82	695	1250	1.6	51	92	33	4.0	9.0	39	0.81	0.36	0.011



BA 258N

261 BELVIN REVIVAL 5261

MALE #2418882 JANUARY 19 2025 BA 261N PEN 2

Woodhill Relevance
WOODHILL REVIVAL H028
 Woodhill Evergreen A43-F039

LT Warden 8316
BELVIN LADY BLOSSOM 224'21
 Belvin Lady Blossom 55'09

Connealy Confidence Plus
 Woodhill Blackbird X197-Z7
 Basin Payweight 1682
 Woodhill Evergreen Y10-A43
 Koupals B&B Titan 3013
 LT Lucy 4078 TW
 Belvin Rebel 33'05
 Belvin Lady Blossom 23'06

BW	ADJ 205	ADJ 365	BW	WW	YW	MK	CED	CEM	CW	MARB	REA	FT
87	749	1238	3.1	78	128	24	-2.0	7.0	62	0.56	0.94	0.000

266 BELVIN CALDWELL 5266

MALE #2418893 JANUARY 21 2025 BA 266N PEN 4

Sitz Resilient 10208

SHAW CALDWELL 11432

Tehama Mary Blackbird Dog4

Baldrige Discovery D121

BELVIN LADY BLOSSOM 159'20

Belvin Lady Blossom 76'12

Sitz Stellar 726D

Sitz Miss Burgess 1856

Tehama Upward Y238

Tehama Mary Blackbird Y684

Fortunes Conquest 224

Baldrige Lady X200

Ring Creek El Tigre 9X

Belvin Lady Blossom 29'08

BW	ADJ 205	ADJ 365	BW	WW	YW	MK	CED	CEM	CW	MARB	REA	FT
60	713	1235	0.9	68	116	36	8.0	3.0	33	0.52	0.30	0.023

TWIN.

267 BELVIN JUSTIFICATION 5267

MALE #2418895 JANUARY 21 2025 BA 267N PEN 6

Baldrige Vegas Go82

BELVIN JUSTIFICATION 1402

Belvin Rosebud 147'19

Riverbend Everest H1231

BELVIN LADY DI 163'23

Belvin Lady Di 89'15

Spring Cove Reno 4021

Baldrige Isabel Y69

HA Outside 5307

VTG Rosebud 47B

S S Niagara Z29

Riverbend Rita D1008

Belvin Velasquez 203'11

Belvin Lady Di 71'12

BW	ADJ 205	ADJ 365	BW	WW	YW	MK	CED	CEM	CW	MARB	REA	FT
92	779	1265	2.4	62	115	33	3.0	1.0	48	0.71	0.90	0.032

270 BELVIN TRADEMARK 5270

MALE #2418901 JANUARY 22 2025 BA 270N PEN 4

Sitz Logo 12964

HEIKEN TRADEMARK 1018

JCH HKN Lucy 9397

Hart Limit Up 0506

BELVIN LADY BLOSSOM 218'23

Belvin Lady Blossom 2'21

Sitz Tebow 11860

Sitz Shauna 3152

JCH Chisum 7019

JCH Hazel 6155

Hoover No Doubt

Hart Whitney 3206

Baldrige Mercenary Doo2

Belvin Lady Blossom 44'14

BW	ADJ 205	ADJ 365	BW	WW	YW	MK	CED	CEM	CW	MARB	REA	FT
74	800	1284	-0.7	66	119	27	12.0	11.0	44	0.64	0.50	0.029

Typical to his sire group, Trademark 5270 is a top notch calving ease option, with his 74 lb actual BW coupled with a negative BW EPD and +12 CED. Along with his light BW, 5270 exhibited strong performance, with an ADJ WW of 800 to give him a 106 ratio for weaning. His Limit Up sired dam was purchased in our 2024 Female Sale by Josh Dowbiggen in the UK, and she now serves as a donor for his program with embryos being exported to the UK.

Lady Blossom 218'23
DAM



BA 270N



BA 276N

BW	ADJ 205	ADJ 365	BW	WW	YW	MK	CED	CEM	CW	MARB	REA	FT
82	759	1307	-0.1	59	98	19	6.0	8.0	38	0.74	0.79	0.039

276 BELVIN REVIVAL 5276

MALE #2418915 JANUARY 25 2025 BA 276N PEN 3

Woodhill Relevance

WOODHILL REVIVAL H028

Woodhill Evergreen A43-F039

Sitz Major 707F

BELVIN LADY BLOSSOM 78'20

Belvin Lady Blossom 10'18

Connealy Confidence Plus

Woodhill Blackbird X197-Z7

Basin Payweight 1682

Woodhill Evergreen Y10-A43

Sitz Stellar 726D

Sitz Lady 383D

SAC Conversation

Belvin Lady Blossom 3'16

Revival 5276 adds to the long list of feature Revival sons through three sales. 5276 is a high growth curve bender who combines negative BW figures with length and style. This big WW bull posted a 107 Index and was a favorite throughout the summer alongside his dam. 5276 has added length, style and an attractive look. The Revival x Major combination will highlight elite udder quality. His hard working Major dam is making her mark with a top cut daughter selected out of our replacement pen last winter by McMillin Ranching, and another son working for Lawrence Ranch.

285 BELVIN ROLL CALL 5285

MALE #2418944 JANUARY 28 2025 BA 285N PEN 4

Brooking Firebrand 6068

BROOKING ROLL CALL 9045

Brooking Beauty 333

Coleman Charlo 0256

BELVIN LADY BLOSSOM 19'19

Belvin Lady Blossom 11'17

Brooking Bank Note 4040

Brooking Annie K 390

S A V Harvester 0338

TLA Beauty 6R

O C C Paxton 730P

BOHI Abigale 6014

Baldrige Compass C050

Belvin Lady Blossom 95'15

BW	ADJ 205	ADJ 365	BW	WW	YW	MK	CED	CEM	CW	MARB	REA	FT
96	764	1203	3.3	63	120	38	2.0	1.0	46	0.54	0.77	0.003



BA 285N

287 BELVIN REVIVAL 5287

MALE #2418948 JANUARY 29 2025 BA 287N PEN 3

Woodhill Relevance

WOODHILL REVIVAL H028

Woodhill Evergreen A43-F039

Baldrige Mercenary D002

BELVIN LADY BLOSSOM 1'21

Belvin Lady Blossom 44'14

Connealy Confidence Plus

Woodhill Blackbird X197-Z7

Basin Payweight 1682

Woodhill Evergreen Y10-A43

EF Commando 1366

Baldrige Rachel A029

SA V Pioneer 7301

Belvin Lady Blossom 37'01

BW	ADJ 205	ADJ 365	BW	WW	YW	MK	CED	CEM	CW	MARB	REA	FT
90	788	1297	2.1	63	118	23	2.0	10.0	54	0.75	0.40	0.077



BA 287N

288 BELVIN NASLUND 5288

MALE #2419760 JANUARY 29 2025 BA 288N PEN 6

Sitz Logo 12964

HEIKEN TRADEMARK 1018

JCH HKN Lucy 9397

Baldrige Mercenary D002

BELVIN EMBLYNETTE 35'23

Belvin Emblynette 102'21

Sitz Tebow 11860

Sitz Shauna 3152

JCH Chisum 7019

JCH Hazel 6155

EF Commando 1366

Baldrige Rachel A029

LT Warden 8316

Belvin Emblynette 201'12

BW	ADJ 205	ADJ 365	BW	WW	YW	MK	CED	CEM	CW	MARB	REA	FT
70	670	1122	-3.5	55	99	24	15.0	16.0	38	0.51	0.30	0.084



BA 296N

291 BELVIN LAWMAN 5291

MALE #2437819 JANUARY 30 2025 BA 291N PEN 6 [CAC]

S S Enforcer E812

RIVERBEND LAWMAN J053

Spruce Mtn Rita 8102

Belvin Tres Marias Patron 205

BELVIN GEORGINA 21'15 CAC

Belvin Georgina 21'13

Sydgen Enhance

S S Miss Daybreak K011 3K17

Baldrige Colonel C251

Black Gold Rita 527

Alston 5384 Catriel F

Tres Marias 6764 Rosanegra 5214

Belvin Panic Switch 2'11

Belvin Georgina 10'11

BW	ADJ 205	ADJ 365	BW	WW	YW	MK	CED	CEM	CW	MARB	REA	FT
88	698	1234	1.1	58	115	27	1.0	2.0	38	0.91	0.67	0.025

294 BELVIN TRADEMARK 5294

MALE #2418959 FEBRUARY 01 2025 BA 294N PEN 4

Sitz Logo 12964

HEIKEN TRADEMARK 1018

JCH HKN Lucy 9397

Woodhill Revival H028

BELVIN LADY BLOSSOM 107'23

Belvin Lady Blossom 46'18

Sitz Tebow 11860

Sitz Shauna 3152

JCH Chisum 7019

JCH Hazel 6155

Woodhill Relevance

Woodhill Evergreen A43-F039

JNJ Pokerface 10C

Belvin Lady Blossom 112'14

BW	ADJ 205	ADJ 365	BW	WW	YW	MK	CED	CEM	CW	MARB	REA	FT
78	793	1335	-2.4	60	112	28	14.0	15.0	43	0.71	0.26	0.064

296 BELVIN ROLL CALL 5296

MALE #2418961 FEBRUARY 01 2025 BA 296N PEN 6

Brooking Firebrand 6068

BROOKING ROLL CALL 9045

Brooking Beauty 333

Baldrige Vegas G082

BELVIN LADY 172'22

Belvin Lady 38'20

Brooking Bank Note 4040

Brooking Annie K 390

SA V Harvester 0338

TLA Beauty 6R

Spring Cove Reno 4021

Baldrige Isabel Y69

Baldrige Discovery D121

Ring Creek Super Lady 24Z

BW	ADJ 205	ADJ 365	BW	WW	YW	MK	CED	CEM	CW	MARB	REA	FT
90	757	1221	1.8	64	108	21	3.0	8.0	54	0.41	0.65	-0.010

298 BELVIN LIMIT UP 5298

MALE #2418963 FEBRUARY 01 2025 BA 298N PEN 6

Hoover No Doubt

HART LIMIT UP 0506

Hart Whitney 3206

Duralta 56S Yellowstone 136X

BELVIN ERICA 122'15

Belvin Erica 54'10

Mogck Bullseye

Miss Blackcap Ellston J2

Connealy Cavalry 1149

Hart Whitney 0244

Minburn Yellowstone 56S

Duralta 32R Alliane 189U

HF Tiger 5T

Belvin Erica 2'06

BW	ADJ 205	ADJ 365	BW	WW	YW	MK	CED	CEM	CW	MARB	REA	FT
60	645	1148	-1.4	45	74	25	9.0	10.0	28	0.50	0.34	0.023



COUL 301N

BW	ADJ 205	ADJ 365	BW	WW	YW	MK	CED	CEM	CW	MARB	REA	FT
86	801	1266	1.3	69	118	22	5.0	10.0	40	0.54	0.41	0.029

301 COUL TRADEMARK 5301

MALE #2419822 FEBRUARY 03 2025 COUL 301N PEN 4

Sitz Logo 12964

HEIKEN TRADEMARK 1018

JCH HKN Lucy 9397

Brooking Roll Call 9045

BELVIN QUEEN 18'23

Belvin Queen 824'18

Sitz Tebow 11860

Sitz Shauna 3152

JCH Chisum 7019

JCH Hazel 6155

Brooking Firebrand 6068

Brooking Beauty 333

HF Junction 18B

JS Queen 101

5301 is a top end Trademark son who is the resulting calf of a feature female purchased by Coul Angus in our 2024 female sale. 5301 has a striking phenotype with breed character, correctness and eye appeal. 5301's dam has developed into a very attractive, power female with a bright future ahead of her. The granddam of 5301 is one of the top production females on our ranch who now serves as a donor after a highlight reel of progeny marketed through past sales, her son sells as lot 188.

305 BELVIN REVIVAL 5305

MALE #2418969 FEBRUARY 05 2025 BA 305N PEN 6

Woodhill Relevance

WOODHILL REVIVAL H028

Woodhill Evergreen A43-F039

LT Warden 8316

BELVIN EMBLYNETTE 271'22

Belvin Emblynette 201'12

Connealy Confidence Plus

Woodhill Blackbird X197-Z7

Basin Payweight 1682

Woodhill Evergreen Y10-A43

Koupals B&B Titan 3013

LT Lucy 4078 TW

HF Kodiak 5R

S A V Emblynette 5486

BW	ADJ 205	ADJ 365	BW	WW	YW	MK	CED	CEM	CW	MARB	REA	FT
75	779	1301	0.8	74	131	18	7.0	8.0	55	0.79	0.34	0.082

312 BELVIN JUSTIFICATION 5312

MALE #2418977 FEBRUARY 07 2025 BA 312N PEN 6

Baldrige Vegas G082

BELVIN JUSTIFICATION 1402

Belvin Rosebud 147'19

Baldrige Discovery D121

BELVIN DUCHESS 299'23

Belvin Duchess 0107'17

Spring Cove Reno 4021

Baldrige Isabel Y69

HA Outside 5307

VTG Rosebud 47B

Fortunes Conquest 224

Baldrige Lady X200

Merit Cast Iron 5094C

Belvin Duchess 209'12



BA 305N

BW	ADJ 205	ADJ 365	BW	WW	YW	MK	CED	CEM	CW	MARB	REA	FT
84	713	1235	3.5	69	121	26	5.0	4.0	49	0.58	0.82	-0.013



BA 314N

314 BELVIN NORTHERN 5314

MALE #2418980 FEBRUARY 07 2025 BA 314N PEN 1

S S Enforcer E812

RIVERBEND LAWMAN J053

Spruce Mtn Rita 8102

Baldrige Mercenary Doo2

BELVIN ERICA 34'19

Belvin Erica 122'15

Syngen Enhance

S S Miss Daybreak Ko11 3K17

Baldrige Colonel C251

Black Gold Rita 527

EF Commando 1366

Baldrige Rachel Ao29

Duralta 56S Yellowstone 136X

Belvin Erica 54'10

Northern 5314 is a long bodied, big topped bull who posts curve bending figures, with built in calving ease matched with performance at weaning and yearling stages. 5314 stacks up one of the elite EPD profiles with ideal growth, modest birth weight and MARB and REA predictions in the top percentiles of the breed. The dam of 5314 is a beautiful Mercenary daughter who has a strong production record with sons at Flying E Rancho, Diamond Willow, and Elkind Ranch Ltd. This high indexing, elite carcass Lawman son will be easy to find.

BW	ADJ 205	ADJ 365	BW	WW	YW	MK	CED	CEM	CW	MARB	REA	FT
82	821	1344	1.1	67	122	31	1.0	2.0	60	1.02	1.19	0.040

317 BELVIN LAWMAN 5317

MALE #2418983 FEBRUARY 09 2025 BA 317N PEN 4

S S Enforcer E812

RIVERBEND LAWMAN J053

Spruce Mtn Rita 8102

Belvin Velasquez 203'11

BELVIN MISS MORRISON 130'16

Remitall Miss Morrison 591U

Syngen Enhance

S S Miss Daybreak Ko11 3K17

Baldrige Colonel C251

Black Gold Rita 527

S A V Bismarck 5682

Belvin Lady Blossom 31'96

Remitall H Rachis 21R

Willabar Miss Morrison 103N

BW	ADJ 205	ADJ 365	BW	WW	YW	MK	CED	CEM	CW	MARB	REA	FT
114	788	1272	7.2	71	122	26	-7.0	-4.0	56	0.48	0.65	-0.012





332 BELVIN LAWMAN 5332

MALE #2419005 FEBRUARY 16 2025 BA 332N PEN 6

S S Enforcer E812

RIVERBEND LAWMAN J053

Spruce Mtn Rita 8102

Llb Free Wheeler 268s

BELVIN LADY BLOSSOM 159'15

Belvin Lady Blossom 37'01

Syngen Enhance

S S Miss Daybreak K011 3k17

Baldrige Colonel C251

Black Gold Rita 527

HF Free Wheeler 191N

LLB Nitchie 637J

Leachman Right Time

Belvin Lady Blossom 66'94

BW	ADJ 205	ADJ 365	BW	WW	YW	MK	CED	CEM	CW	MARB	REA	FT
93	808	1285	2.3	61	107	17	1.0	2.0	28	0.49	0.79	-0.034

333 VADER NEIL 5333

MALE #2427765 FEBRUARY 17 2025 COLT 333N PEN 6

Sitz Resilient 10208

SHAW CALDWELL 11432

Tehama Mary Blackbird Dog4

Poss Maverick

BELVIN LADY BLOSSOM 272'22

Belvin Lady Blossom 160'11

Sitz Stellar 726D

Sitz Miss Burgess 1856

Tehama Upward Y238

Tehama Mary Blackbird Y684

Basin Payweight 1682

Poss Pride 5163

Belvin Rebel 33'05

Belvin Lady Blossom 7'05

BW	ADJ 205	ADJ 365	BW	WW	YW	MK	CED	CEM	CW	MARB	REA	FT
82	761	1213	-0.5	60	116	37	8.0	9.0	53	0.57	0.63	0.037

342 BELVIN LAWMAN 5342

MALE #2419013 FEBRUARY 25 2025 BA 342N PEN 6

S S Enforcer E812

RIVERBEND LAWMAN J053

Spruce Mtn Rita 8102

Belvin Rebel 33'05

BELVIN EMBLYNETTE 208'11

S A V Emblynette 5486

Syngen Enhance

S S Miss Daybreak K011 3K17

Baldrige Colonel C251

Black Gold Rita 527

F A R Krugerrand 410H

Belvin Georgina 81'03

S A V 8180 Traveler 004

S A V Emblynette 7260

5342 is a powerfully constructed, dense made Lawman son who compliments this impressive sire group well. 5342 displayed early maturity with strong pre weaning growth to index 114. A maternal brother was a past High selling bull in our 2019 Bull Sale to Macnab Angus where he served as a potent Herd Sire. 5342's dam is a member of the Emblynette cow family who has raised 14 natural calves with the 15th on the way; she maintains perfect feet, udder, and fleshing ability.



Flyin' High 8020

**MATERNAL BROTHER, AND HIGH
SELLING BULL IN 2019 SALE**



BA 342N

BW	ADJ 205	ADJ 365	BW	WW	YW	MK	CED	CEM	CW	MARB	REA	FT
90	809	1416	1.4	61	116	20	4.0	-1.0	47	0.90	0.23	0.026

344 BELVIN CALDWELL 5344

MALE #2419014 FEBRUARY 27 2025 BA 344N PEN 6

Sitz Resilient 10208

SHAW CALDWELL 11432

Tehama Mary Blackbird Dog4

Poss Maverick

BELVIN LASSIE 59'20

Belvin Lassie 13'06

Sitz Stellar 726D

Sitz Miss Burgess 1856

Tehama Upward Y238

Tehama Mary Blackbird Y684

Basin Payweight 1682

Poss Pride 5163

Belvin Panther 21'04

Northline Black Crystal 145P

BW	ADJ 205	ADJ 365	BW	WW	YW	MK	CED	CEM	CW	MARB	REA	FT
86	829	1272	2.3	72	131	36	3.0	5.0	57	0.81	1.10	0.027



BA 344N

347 BELVIN REVIVAL 5347

MALE #2419016 MARCH 02 2025 BA 347N PEN 6

Woodhill Relevance

WOODHILL REVIVAL H028

Woodhill Evergreen A43-F039

Square B Atlantis 8060

BELVIN ANDRIA 122'22

Belvin Tres Marias Andria 7313

Connealy Confidence Plus

Woodhill Blackbird X197-Z7

Basin Payweight 1682

Woodhill Evergreen Y10-A43

SA V Rainfall 6846

Elbanna of Conanga 1209

Tres Marias 6301 Zorzal

Tres Marias 7358 LA Andria T/E

BW	ADJ 205	ADJ 365	BW	WW	YW	MK	CED	CEM	CW	MARB	REA	FT
87	723	1087	0.8	62	95	27	2.0	7.0	43	0.80	0.47	0.054



BA 355N

355 BELVIN REVIVAL 5355

MALE #2419020 MARCH 21 2025 BA 355N PEN 6

Woodhill Relevance

WOODHILL REVIVAL H028

Woodhill Evergreen A43-F039

Baldrige Discovery D121

BELVIN GEORGINA 26'20

Belvin Georgina 159'12

Connealy Confidence Plus

Woodhill Blackbird X197-Z7

Basin Payweight 1682

Woodhill Evergreen Y10-A43

Fortunes Conquest 224

Baldrige Lady X200

Belvin Rebel 33'05

Belvin Georgina 60'00

BW	ADJ 205	ADJ 365	BW	WW	YW	MK	CED	CEM	CW	MARB	REA	FT
76	769	1252	-1.9	56	101	29	14.0	11.0	49	0.84	0.53	0.073



BA 357N

357 BELVIN APEX 5357

MALE #2419021 MARCH 25 2025 BA 357N PEN 6

S Architect 9501

SR SOUTH APEX 352

Pine Coulee Everelda W77

Musgrave 316 Stunner

BELVIN LADY BLOSSOM 174'19

Belvin Lady Blossom 43'14

Sydgen Blueprint

S Blossom 7514

SA V Net Worth 4200

Sitz Everelda Entense 2198

LD Capitalist 316

MCATL Blackbird 831-1378

Belvin Velasquez 203'11

Belvin Lady Blossom 76'12

BW	ADJ 205	ADJ 365	BW	WW	YW	MK	CED	CEM	CW	MARB	REA	FT
87	744	1262	2.0	70	108	20	3.0	5.0	53	0.67	0.79	0.016





A NOTE ABOUT THE EXTRA AGE BULLS

One question we've been asked a fair bit the last couple of years, while touring people through the bulls, is regards to the performance of the extra age bulls compared to the yearling bulls. More specifically, we get asked a lot why the "power" extra age bulls don't have as much performance as the "power" yearling bulls, when comparing their weaning weights.

The genetics between the two groups are the same, the difference is the management due to the different calving windows. The winter born bulls are weaned in late August. The last few weeks leading up to weaning, these bulls are eating hardened up, potent grass alongside their moms, who are still milking full bore. Conversely, the summer born bulls are weaned in early January. They graze banked grass and stubble with their moms for as long as the snow will permit, then the cows are fed a light ration while still out grazing in the cold and the snow, not nearly as easy a life for the younger bulls. Neither group of calves get creep feed. The difference between the groups leading up to weaning time is notable though.

We would suggest that if you want to compare the performance of a yearling vs an extra age bull, use their EPD's, which are genomically enhanced to increase their accuracy. The ADJ WW is useful to compare a yearling to a yearling, or an extra age to an extra age, but it's not as effective when comparing yearlings to extra age, it's an "apples to oranges" scenario.

BA extra age bulls

FORTY-SEVEN YEARS OF ANGUS



BA 413M

413 BELVIN CALDWELL 4413

MALE #2387865 MAY 19 2024 BA 413M

Sitz Resilient 10208

SHAW CALDWELL 11432

Tehama Mary Blackbird Dog4

LT Warden 8316

BELVIN ERICA 57'21

Belvin Erica 111'15

Sitz Stellar 726D

Sitz Miss Burgess 1856

Tehama Upward Y238

Tehama Mary Blackbird Y684

Koupals B&B Titan 3013

LT Lucy 4078 TW

Belvin Vector 202'12

Belvin Erica 84'08

BW	ADJ 205	ADJ 365	BW	WW	YW	MK	CED	CEM	CW	MARB	REA	FT
81	714	1233	-0.1	68	127	31	5.0	10.0	59	0.30	0.74	-0.014

414 BELVIN MASTERSON 4414

MALE #2387866 MAY 21 2024 BA 414M

Sitz Resilient 10208

SHAW CALDWELL 11432

Tehama Mary Blackbird Dog4

Baldrige Vegas Go82

BELVIN LADY BLOSSOM 401'21

Belvin Lady Blossom 49'19

Sitz Stellar 726D

Sitz Miss Burgess 1856

Tehama Upward Y238

Tehama Mary Blackbird Y684

Spring Cove Reno 4021

Baldrige Isabel Y69

Musgrave Sky High 1535

Belvin Lady Blossom 205'12

BW	ADJ 205	ADJ 365	BW	WW	YW	MK	CED	CEM	CW	MARB	REA	FT
84	741	1279	0.4	73	124	36	5.0	7.0	58	0.66	0.69	0.000

Lady Blossom 205'12 **GREAT GRAND-DAM**

Masterson 4414 is the powerhouse of the Caldwell sire group in the extra age program, with lots of body mass, length and performance. 4414 has looked impressive from a young age at the side of his powerful Vegas sired dam, with his added growth and attractive look. 4414 has displayed impressive growth and maturity from an early age, posting a 106 WW and 108 YW Index. 4414 stems from a highly potent line of performance females such as the 205'12 donor female, who produced 20 sons and an elite set of daughters working in our herd.



BA 414M



top stock



BA 415M

415 BELVIN CALDWELL 4415

MALE #2387867 MAY 22 2024 BA 415M

Sitz Resilient 10208

SHAW CALDWELL 11432

Tehama Mary Blackbird Dog4

Sitz Major 707F

BELVIN MISSIE 415'21

Belvin Missie 323'19

Sitz Stellar 726D

Sitz Miss Burgess 1856

Tehama Upward Y238

Tehama Mary Blackbird Y684

Sitz Stellar 726D

Sitz Lady 383D

Baldrige Discovery D121

Elliot 3E Miss Briar 5118

Caldwell 4415 is a calving ease deluxe extra age bull, with BW and CED figures both in the top percentiles of the breed; true to his lineage being double bred Stellar. This long bodied, clean made bull posted impressive growth at both WW and YW, indexing 103 off a second calver. His young dam is an early favorite in the summer program, with a beautiful udder and feminine design, typical of the Missie cow family. This strong footed, large scrotal extra age bull is tailor made to service a large group of heifers this upcoming spring. A maternal bull sold in last years sale to Hillview Colony.

BW	ADJ 205	ADJ 365	BW	WW	YW	MK	CED	CEM	CW	MARB	REA	FT
60	698	1210	-1.8	71	111	20	11.0	11.0	38	0.26	0.87	0.009

Lotto 3403 MATERNAL BROTHER



Miss Legacy 019 FOURTH DAM



Major707F MATERNAL GRAND-SIRE





BA 417M

417 BELVIN MANDALAY 4417

MALE #2387958 MAY 26 2024 BA 417M

Vermilion Reride F116

BELVIN MAY CITY 0136

Belvin Georgina 121'17

Tres Marias 8155 Candelerio

BELVIN ELSAUZ MARGARITA 346'20

Tres Marias 9616 Federal 7768

Vermilion Re-ride

Vermilion Lucy 5087

HF Syndicate 65B

Belvin Georgina 45'15

Don Jose 176 Maxi

Tres Marias 7358 LA Andria

Tres Marias 9257 Federal

Tres Marias 7768 Ext Play 4655

BW	ADJ 205	ADJ 365	BW	WW	YW	MK	CED	CEM	CW	MARB	REA	FT
88	730	1242	1.4	52	84	16	5.0	0.0	31	0.56	0.44	0.036

Mandalay 4417 is the cowboy bull in the extra age pen, he is big topped and packed full of muscle. Noted from a young age, 4417 displayed early maturity and a powerful make up, much like his sire May City. The dam of 4417 is ideal in every way, very feminine and perfect uddered; this Candelerio sired female comes from the famed Tres Marias herd in Argentina. This low maintenance, stunning made female will enter our donor program this summer with much excitement. 4417 has been an early favorite by visitors, and will be easy to find in the pens on sale day.

420 BELVIN MAY CITY 4420

MALE #2387972 JUNE 01 2024 BA 420M

Vermilion Reride F116

BELVIN MAY CITY 0136

Belvin Georgina 121'17

Duralta 56S Yellowstone 136X

BELVIN GEORGINA 71'15

Belvin Georgina 33'12

Vermilion Re-ride

Vermilion Lucy 5087

HF Syndicate 65B

Belvin Georgina 45'15

Minburn Yellowstone 56S

Duralta 32R Alliane 189U

Ring Creek El Tigre 9X

Belvin Georgina 18'10

BW	ADJ 205	ADJ 365	BW	WW	YW	MK	CED	CEM	CW	MARB	REA	FT
84	774	1196	2.9	64	91	24	1.0	9.0	35	0.46	0.68	0.000



BA 420M



BA 424M

424 BELVIN MCCOY 4424

MALE #2387983 JUNE 03 2024 BA 424M

Vermilion Reride F116

BELVIN MAY CITY 0136

Belvin Georgina 121'17

Sitz Alliance 6595

BELVIN LADY BLOSSOM 12'15

Belvin Lady Blossom 22'02

Vermilion Re-ride

Vermilion Lucy 5087

HF Syndicate 65B

Belvin Georgina 45'15

Sitz Traveler 8180

Sitz Barbaramere Jet 2698

O G L Battle Cry 427 128

Belvin Lady Blossom 47'97

BW	ADJ 205	ADJ 365	BW	WW	YW	MK	CED	CEM	CW	MARB	REA	FT
96	757	1282	3.2	61	104	20	1.0	4.0	47	0.54	0.51	0.031

Georgina 6'19

MATERNAL SISTER TO SIRE



McCoy 4424 is a performance-oriented May City son, who is a true beef bull with added muscle and scale. 4424 has posted front-end pre and post weaning growth to index 106 and 107 alongside his 9-year-old mother. His heavy milking dam combines breed greats like Sitz Alliance 6595 and OGL Battle Cry, and is an own daughter of herd matriarch Lady Blossom 22'02, who's influence is heavily felt in our program. Look to this herd bull to add longevity, improve foot and udder quality, and increase WW on a set of feeder cattle. Maternal brothers have sold to Dalrene Farms and Klaudt Ranches.



BA 426M

426 BELVIN CALDWELL 4426

MALE #2387986 JUNE 03 2024 BA 426M

Sitz Resilient 10208

SHAW CALDWELL 11432

Tehama Mary Blackbird D094

Baldrige Alternative E125

BELVIN ERELLA 434'21

Elliot 3E Erella 03X

Sitz Stellar 726D

Sitz Miss Burgess 1856

Tehama Upward Y238

Tehama Mary Blackbird Y684

Poss Easy Impact 0119

Baldrige Blackbird A030

S A V Final Answer 0035

Willow Erella R10

BW	ADJ 205	ADJ 365	BW	WW	YW	MK	CED	CEM	CW	MARB	REA	FT
70	686	1236	-0.6	64	108	21	8.0	10.0	31	0.46	0.90	-0.015



BA 428M

428 BELVIN MODIFIED 4428

MALE #2387987 JUNE 04 2024 BA 428M

Vermilion Reride F116

BELVIN MAY CITY 0136

Belvin Georgina 121'17

Belvin Velasquez 203'11

BELVIN EMBLYNETTE 21'17

Belvin Emblynette 208'11

Vermilion Re-ride

Vermilion Lucy 5087

HF Syndicate 65B

Belvin Georgina 45'15

S A V Bismarck 5682

Belvin Lady Blossom 31'96

Belvin Rebel 33'05

S A V Emblynette 5486

BW	ADJ 205	ADJ 365	BW	WW	YW	MK	CED	CEM	CW	MARB	REA	FT
92	728	1233	3.0	60	98	23	2.0	4.0	42	0.53	0.90	0.024

King City 2412

MATERNAL BROTHER



Modified 4428 is a long bodied, big topped bull who posts strong performance at weaning and yearling stages. 4428 has the muscle shape and look of his grandsire Velasquez, who is among the best sires ever produced at our ranch. The dam of 4428 is a moderate framed, perfect uddered female that is built to last, true to the Emblynette cow family. This big outlined, athletic bull posted one of the top scans for IMF and REA to index 126 and 108 among his calf crop. Maternal brothers have sold as past sale features to East & West Ranching Co. Ltd. & Elkink Ranch Ltd.



BA 430M

430 BELVIN MAY CITY 4430

MALE #2387989 JUNE 06 2024 BA 430M

Vermilion Reride F116

BELVIN MAY CITY 0136

Belvin Georgina 121'17

HF Junction 18B

BELVIN 3E ROSEBUD 261'17

KFC 7549 Rosebud 0122X

Vermilion Re-ride

Vermilion Lucy 5087

HF Syndicate 65B

Belvin Georgina 45'15

Young Dale Yohann 39Y

HF Elsiemere 106W

Connealy Freightliner

KFC 205 Rosebud 8519

BW	ADJ 205	ADJ 365	BW	WW	YW	MK	CED	CEM	CW	MARB	REA	FT
87	730	1184	1.6	48	73	28	1.0	5.0	29	0.46	0.56	-0.006



432 BELVIN MAY CITY 4432

MALE #2387991 JUNE 07 2024 BA 432M

Vermilion Reride F116

BELVIN MAY CITY 0136

Belvin Georgina 121'17

S A V Resource 1441

BELVIN 3E LEMAY 250'17

Elliot 3E Lemay 1029

Vermilion Re-ride

Vermilion Lucy 5087

HF Syndicate 65B

Belvin Georgina 45'15

Rito 707 of Ideal 3407 7075

S A V Blackcap May 4136

S A V Bismarck 5682

Willow Lemay To7

BW	ADJ 205	ADJ 365	BW	WW	YW	MK	CED	CEM	CW	MARB	REA	FT
90	646	1120	2.4	54	93	23	4.0	4.0	38	0.18	0.94	-0.012

434 BELVIN MONTE CARLO 4434

MALE #2387993 JUNE 10 2024 BA 434M

Vermilion Reride F116

BELVIN MAY CITY 0136

Belvin Georgina 121'17

Belvin Velasquez 203'11

BELVIN TORCAZA 147'14

Belvin Tres Maria Torcaza 201W

Vermilion Re-ride

Vermilion Lucy 5087

HF Syndicate 65B

Belvin Georgina 45'15

S A V Bismarck 5682

Belvin Lady Blossom 31'96

Tres Marias 6301 Zorzal

Tres Marias 5214 Torcaza

BW	ADJ 205	ADJ 365	BW	WW	YW	MK	CED	CEM	CW	MARB	REA	FT
88	727	1251	2.0	60	104	16	4.0	2.0	34	0.34	0.91	-0.012

Monte Carlo is a very exciting herd sire prospect, combining our stud sire May City with the Torcaza cow family, which has been responsible for some of the top females in our program. 4434 puts it all together from the ground up with excellent feet, sound structure, added muscle and an attractive look. The dam of 4434 is a herd favorite who we feel is ideal in every way, from her angular design, udder quality, big body and feminine look; she is a member of our donor arsenal. This high horsepower cow bull will add red meat and substance to his calves in an acceptable frame score, while combining some of the top females in our program, delivering immense maternal strength.

Torcaza 147'14 DAM



BA 434M





BA 435M

435 BELVIN MONASHEE 4435

MALE #2387995 JUNE 11 2024 BA 435M

Vermilion Reride F116
BELVIN MAY CITY 0136
Belvin Georgina 121'17

LT Warden 8316
BELVIN ERELLA 320'20
Elliot 3E Erella 03X

Vermilion Re-ride
Vermilion Lucy 5087
HF Syndicate 65B
Belvin Georgina 45'15
Koupals B&B Titan 3013
LT Lucy 4078 TW
SA V Final Answer 0035
Willow Erella R10

BW	ADJ 205	ADJ 365	BW	WW	YW	MK	CED	CEM	CW	MARB	REA	FT
88	699	1147	2.4	50	80	27	3.0	6.0	21	0.41	0.50	0.013

Erella 03X
GRAND-DAM



Monashee 4435 is a very complete and well-balanced bull with exceptional breed character and presence. This attractive herd sire prospect combines the proven bull-producing sire May City, with the performance of Warden and the calving ease of Final Answer. With added substance and heavy muscle expression this extra age bull stands on perfect feet and has the soundness that will thrive in any environment. His dam is a big volume, easy fleshing female who produced a son to Byemoor Colony.



BA 436M

436 BELVIN METHOD 4436

MALE #2387997 JUNE 15 2024 BA 436M

Vermilion Reride F116
BELVIN MAY CITY 0136
Belvin Georgina 121'17

Baldrige Mercenary Doo2
BELVIN LADY BLOSSOM 303'19
Belvin Lady Blossom 252'17

Vermilion Re-ride
Vermilion Lucy 5087
HF Syndicate 65B
Belvin Georgina 45'15
EF Commando 1366
Baldrige Rachel A029
JNJ Pokerface 10C
Belvin Lady Blossom 141'11

BW	ADJ 205	ADJ 365	BW	WW	YW	MK	CED	CEM	CW	MARB	REA	FT
80	589	1076	0.5	44	81	21	9.0	7.0	32	0.48	0.94	-0.062

437 BELVIN MAY CITY 4437

MALE #2387999 JUNE 15 2024 BA 437M

Vermilion Reride F116
BELVIN MAY CITY 0136
Belvin Georgina 121'17

Musgrave Sky High 1535
BELVIN LADY BLOSSOM 49'19
Belvin Lady Blossom 205'12

Vermilion Re-ride
Vermilion Lucy 5087
HF Syndicate 65B
Belvin Georgina 45'15
Musgrave Big Sky
FLAG Queen W 00649
SA V Pioneer 7301
Belvin Lady Blossom 37'01

BW	ADJ 205	ADJ 365	BW	WW	YW	MK	CED	CEM	CW	MARB	REA	FT
96	641	1127	2.2	53	98	25	3.0	8.0	36	0.50	0.60	0.035

440 BELVIN MAY CITY 4440

MALE #2388003 JUNE 18 2024 BA 440M

Vermilion Reride F116
BELVIN MAY CITY 0136
Belvin Georgina 121'17

Poss Maverick
BELVIN MISSIE 329'19
KFC 839L Miss Legacy 019

Vermilion Re-ride
Vermilion Lucy 5087
HF Syndicate 65B
Belvin Georgina 45'15
Basin Payweight 1682
Poss Pride 5163
O C C Legacy 839L
KFC 4532 Miss Rainmaker

BW	ADJ 205	ADJ 365	BW	WW	YW	MK	CED	CEM	CW	MARB	REA	FT
82	709	1177	0.4	54	89	20	9.0	8.0	31	0.55	0.67	-0.012



BA 285N

BULL SALE Terms & Conditions

OWNERSHIP Belvin Angus will retain 1/3 semen interest in all bulls selling. Buyer has full possession and full salvage value of the bull.

CATTLE INSPECTION All bulls carry permanent identity tags that correspond with the Sale Lot numbers. The bulls also carry a freeze brand, correlating their birth year and their tag number. All bulls have the required CCIA buttons. Cattle available for viewing prior to the sale.

BREEDING GUARANTEE All bulls sell with the responsible Breeders Guarantee of Satisfaction. All bulls are guaranteed. All cattle sell under the Terms and Conditions set forth by the Canadian Angus Association.

SIGHT UNSEEN PURCHASE GUARANTEE If you are unable to attend the sale, we have a sight unseen purchase plan that is 100% satisfaction guaranteed. Contact any of us for further details.

INSURANCE Ownership risk to purchaser commences when the Auctioneer's hammer falls. Livestock insurance will be available sale day.

TERMS OF SALE Cash or cheque at par, payable to Clerks on Sale Day. No release of cattle will occur until satisfactory settlement has been made.

LIABILITY All Persons who attend this sale do so at their own risk, and the owners and sale staff assume no liability, legal or otherwise for property loss or for any accidents that may occur.


ANNOUNCEMENTS Errors discovered in the catalogue will be corrected from the auction block at the beginning of the sale and such corrections will take precedence over the printed material in the catalogue.



GENOMICALLY ENHANCED EPDS All bulls are parent verified and have genetically enhanced EPDs.

CARCASS DATA

ULTRASOUND The bulls have all been ultrasounded. Ultrasound results will be available sale day.



— 47 YEARS OF ANGUS —

BA open heifers



Lady Blossom 10'24 MATERNAL SISTER



BA 5011M

BW	ADJ 205	ADJ 365	BW	WW	YW	MK	CED	CEM	CW	MARB	REA	FT
60	564		1.2	66	115	35	3.5	7.5	41	0.56	0.53	0.031

11

BELVIN LADY BLOSSOM 11'25

FEMALE #2417217 DECEMBER 16 2024 BA 5011M

Sitz Resilient 10208

SHAW CALDWELL 11432

Tehama Mary Blackbird D094

Brooking Roll Call 9045

BELVIN LADY BLOSSOM 38'22

Belvin Lady Blossom 59'18

Sitz Stellar 726D

Sitz Miss Burgess 1856

Tehama Upward Y238

Tehama Mary Blackbird Y684

Brooking Firebrand 6068

Brooking Beauty 333

S A V Pioneer 7301

Belvin Lady Blossom 37'01

Lady Blossom 11'25 is a typical Caldwell daughter, deep ribbed, angular and sound. The first Caldwell daughters have calved now and they are beautiful, maternal females. The dam of 11'25 is probably our best Roll Call daughter, a massive ribbed cow with excellent udder quality. A maternal sister to 11'25 sold as a \$30,000 feature in the 2025 Angus Collection Sale to BJ Cattle Co. The maternal strength in this feature heifer is huge. **TWIN.**

76

BELVIN ANDRIA 76'25

FEMALE #2418036 DECEMBER 28 2024 BA 5076M

Square B Atlantis 8060

BELVIN KOKANEE 2022

Belvin Georgina 14'14

Musgrave 316 Stunner

BELVIN ANDRIA 90'20

Belvin Andria 48'15

S A V Rainfall 6846

Elbanna of Conanga 1209

Belvin Tres Marias Patron 205

Belvin Georgina 33'12

LD Capitalist 316

MCATL Blackbird 831-1378

Wiwa Creek Monarch 248'12

Belvin Tres Marias Andria 7313

Andria 76'25 is a hairy, stout made Kokanee daughter, consistent to the usual type he sires. The maternal grandam of 76'25 is a top flight donor female, while the dam of 76'25 has a strong production record, with daughters to David Perez/Isaac Gomez in Mexico, and Puhallo Angus.



Andria 124'22 MATERNAL SISTER



BA 5076M

BW	ADJ 205	ADJ 365	BW	WW	YW	MK	CED	CEM	CW	MARB	REA	FT
78			2.3	60	104	30	0.0	3.0	42	0.55	0.49	0.031

140 BELVIN LADY BLOSSOM 140'25

FEMALE #2418446 JANUARY 04 2025 BA 140N

Woodhill Relevance

WOODHILL REVIVAL H028

Woodhill Evergreen A43-F039

Sitz Major 707F

BELVIN LADY BLOSSOM 178'22

Belvin Lady Blossom 159'15

Connealy Confidence Plus

Woodhill Blackbird X197-Z7

Basin Payweight 1682

Woodhill Evergreen Y10-A43

Sitz Stellar 726D

Sitz Lady 383D

LLB Free Wheeler 268S

Belvin Lady Blossom 37'01

BW	ADJ 205	ADJ 365	BW	WW	YW	MK	CED	CEM	CW	MARB	REA	FT
86	711		2.2	67	120	25	1.0	6.0	45	0.65	0.48	0.067



BA 140N

173 BELVIN LADY BLOSSOM 173'25

FEMALE #2418486 JANUARY 07 2025 BA 173N

Woodhill Relevance

WOODHILL REVIVAL H028

Woodhill Evergreen A43-F039

Belvin May City 0136

BELVIN LADY BLOSSOM 49'23

Belvin Lady Blossom 116'16

Connealy Confidence Plus

Woodhill Blackbird X197-Z7

Basin Payweight 1682

Woodhill Evergreen Y10-A43

Vermilion Reride F116

Belvin Georgina 121'17

Duralta 56S Yellowstone 136X

Belvin Lady Blossom 160'11

BW	ADJ 205	ADJ 365	BW	WW	YW	MK	CED	CEM	CW	MARB	REA	FT
70	700		0.6	62	113	28	6.0	11.0	48	0.83	0.43	0.053



BA 173N

193 BELVIN LADY 193'25

FEMALE #2418515 JANUARY 10 2025 BA 193N

Woodhill Relevance

WOODHILL REVIVAL H028

Woodhill Evergreen A43-F039

Sitz Major 707F

BELVIN LADY 94'22

Belvin Lady 106'17

Connealy Confidence Plus

Woodhill Blackbird X197-Z7

Basin Payweight 1682

Woodhill Evergreen Y10-A43

Sitz Stellar 726D

Sitz Lady 383D

Merit Cast Iron 5094C

Ring Creek Super Lady 24Z

BW	ADJ 205	ADJ 365	BW	WW	YW	MK	CED	CEM	CW	MARB	REA	FT
80	639		2.3	68	122	20	2.0	6.0	54	0.72	0.66	0.037



BA 193N

209 BELVIN LADY BLOSSOM 209'25

FEMALE #2418694 JANUARY 11 2025 BA 209N

Woodhill Relevance

WOODHILL REVIVAL H028

Woodhill Evergreen A43-F039

Sitz Major 707F

BELVIN LADY BLOSSOM 46'22

Belvin Lady Blossom 113'19

Connealy Confidence Plus

Woodhill Blackbird X197-Z7

Basin Payweight 1682

Woodhill Evergreen Y10-A43

Sitz Stellar 726D

Sitz Lady 383D

Musgrave Sky High 1535

Belvin Lady Blossom 170'17

BW	ADJ 205	ADJ 365	BW	WW	YW	MK	CED	CEM	CW	MARB	REA	FT
85	638		1.7	67	119	23	6.0	9.0	46	0.60	0.58	0.055



BA 209N

244 BELVIN LADY DI 244'25

FEMALE #2418808 JANUARY 16 2025 BA 244N

Sitz Logo 12964

HEIKEN TRADEMARK 1018

JCH HKN Lucy 9397

Woodhill Revival Ho28

BELVIN LADY DI 196'23

Belvin Lady Di 224'19

Sitz Tebow 11860

Sitz Shauna 3152

JCH Chisum 7019

JCH Hazel 6155

Woodhill Relevance

Woodhill Evergreen A43-F039

Belvin Velasquez 203'11

Belvin Lady Di 71'12

BW	ADJ 205	ADJ 365	BW	WW	YW	MK	CED	CEM	CW	MARB	REA	FT
72	655		-0.8	63	106	25	10.0	10.0	37	0.63	0.18	0.044



BA 244N

263 COUL GEORGINA 263'25

FEMALE #2418885 JANUARY 20 2025 COUL 263N

Brooking Firebrand 6068

BROOKING ROLL CALL 9045

Brooking Beauty 333

Baldrige Vegas Go82

BELVIN GEORGINA 35'22

Belvin Georgina 121'17

Brooking Bank Note 4040

Brooking Annie K 390

S A V Harvester 0338

TLA Beauty 6R

Spring Cove Reno 4021

Baldrige Isabel Y69

HF Syndicate 65B

Belvin Georgina 45'15

BW	ADJ 205	ADJ 365	BW	WW	YW	MK	CED	CEM	CW	MARB	REA	FT
70	646		-0.3	53	85	30	7.0	9.0	27	0.31	0.54	0.017



COUL 263N

277 BELVIN EMBLYNETTE 277'25

FEMALE #2418921 JANUARY 25 2025 BA 277N

Square B Atlantis 8060

BELVIN KOKANEE 2022

Belvin Georgina 14'14

Vermilion Reride F116

BELVIN EMBLYNETTE 131'20

Belvin Emblynette 21'17

S A V Rainfall 6846

Elbanna of Conanga 1209

Belvin Tres Marias Patron 205

Belvin Georgina 33'12

Vermilion Re-ride

Vermilion Lucy 5087

Belvin Velasquez 203'11

Belvin Emblynette 208'11

BW	ADJ 205	ADJ 365	BW	WW	YW	MK	CED	CEM	CW	MARB	REA	FT
90	659		3.0	60	104	30	0.0	0.0	37	0.54	0.57	0.024

A member of the famed Emblynette cow family, 277'25 is another bold ribbed, stout made Kokanee daughter with great hair and an eye appealing look. The maternal side of 277'25 is top notch with Rainfall, Velasquez and the Emblynette cow family.



BA 277N

279 VADER GEORGINA 279'25

FEMALE #2418925 JANUARY 26 2025 COLT 279N

Baldridge Vegas G082

BELVIN JUSTIFICATION 1402

Belvin Rosebud 147'19

Hart Limit Up 0506

BELVIN GEORGINA 60'23

Belvin Georgina 211'21

Spring Cove Reno 4021

Baldridge Isabel Y69

HA Outside 5307

VTG Rosebud 47B

Hoover No Doubt

Hart Whitney 3206

HF Syndicate 65B

Belvin Georgina 162'13

BW	ADJ 205	ADJ 365	BW	WW	YW	MK	CED	CEM	CW	MARB	REA	FT
70	655		0.2	51	91	32	7.0	9.0	43	0.59	0.57	0.001



COLT 279N

308 BELVIN TORCAZA 308'25

FEMALE #2418972 FEBRUARY 06 2025 BA 308N

Sitz Logo 12964

HEIKEN TRADEMARK 1018

JCH HKN Lucy 9397

Woodhill Revival Ho28

BELVIN TORCAZA 39'23

Belvin Torcaza 14'20

Sitz Tebow 11860

Sitz Shauna 3152

JCH Chisum 7019

JCH Hazel 6155

Woodhill Relevance

Woodhill Evergreen A43-F039

Poss Maverick

Belvin Torcaza 75'18

BW	ADJ 205	ADJ 365	BW	WW	YW	MK	CED	CEM	CW	MARB	REA	FT
80	664		0.0	65	110	25	9.0	9.0	41	0.63	0.47	0.042



BA 308N

339 BELVIN LADY BLOSSOM 339'25

FEMALE #2419011 FEBRUARY 23 2025 BA 339N

S S Enforcer E812

RIVERBEND LAWMAN J053

Spruce Mtn Rita 8102

SAC Conversation

BELVIN LADY BLOSSOM 10'18

Belvin Lady Blossom 3'16

Sydgen Enhance

S S Miss Daybreak K011 3K17

Baldridge Colonel C251

Black Gold Rita 527

Silveiras Conversion 8064

Laftins Farrah 0250

HF Junction 18B

Belvin Lady Blossom 44'14

BW	ADJ 205	ADJ 365	BW	WW	YW	MK	CED	CEM	CW	MARB	REA	FT
94	660		3.9	62	110	28	-1.5	0.5	35	0.79	0.87	-0.002

Lady Blossom 339'25 is the youngest heifer in the group but probably the most powerfully constructed, with added bone and depth. The Lawman daughters are excellent young cows with great udders. A maternal sister was a feature heifer to Spencer McMillin in last years bull sale, while sons from the productive dam of 339'25 have sold to Ilinicki Ranch, Lawrence Ranch and the Kinsella's.



BA 339N

Lady Blossom 10'18 DAM



upcoming **B** **A** sires

ledoux

ELLINGSON LEDOUX

Owned with Ellingson Angus. Ellingson Ledoux was selected as the \$85,000 Second-High Selling bull in the 2025 Ellingson Angus sale. Sired by the popular and time-tested Badlands, Ledoux was the first Badlands son that Ellingson's retained half interest in for their own use. Out of a gorgeous Barricade first calf heifer, the maternal and real-world functionality of Ledoux is immense. Ranking in the Top 1% of the AAA population for their \$M (Maternal) Index, Ledoux is an exceptional footed bull, who has solid growth, heart health, udder quality and longevity bred in, and combined with the excellent phenotype of his popular sire and beautiful dam. The Ledoux calves on the ground are already impressive, and we can't wait to see what he will do in our program.

BW	WW	YW	MK	CED	CEM	CW	MB	REA	FT
0.7	84	140	24	6.0	8.0	62	0.11	0.77	0.032



DAM



yukon

WOODHILL YUKON L033

Woodhill Yukon L033 was selected as the \$42,500 High Selling Bull at the 2024 Woodhill Farms Bull Sale. Yukon is a unique individual. Phenotypically he is attractive made and stout, with extra volume, a nice head and good scrotal. Genotypically, he is a bull who is 0.1 for BW, while still having strong performance and an amazing 1.57 marbling EPD, ranking in the top 1% of the breed. Yukon's combination of phenotype and carcass merit is hard to come by.



BW	WW	YW	MK	CED	CEM	CW	MB	REA	FT
0.1	68	127	35	8	11	41	1.57	0.23	.056

apex

SR SOUTH APEX 352

SR South Apex 352 was selected as one of the features from the 2024 Spickler South Bull Sale. Apex is an exciting son of the popular S Architect 9501, while his dam is a potent daughter of the great SAV Net Worth 4200, who stems from the legendary Everelda Entense cow family at Sitz. Apex is a long sided, stout hipped bull with added bone and great feet, with an awesome combo of calving ease, performance, maternal strength and carcass merit.

The dam of SR South Apex 352 is pictured below.



BW	WW	YW	MK	CED	CEM	CW	MB	REA	FT
-0.6	69	113	26	8	7	48	0.95	0.28	0.053

upcoming sires

BA



roi

EVERBLACK ALLANDALE ROI 95L

Everblack Allandale ROI 95L is a hairy, deep sided, good headed, good-looking bull out of the increasingly popular Bar-E-L Stamina 11F. With the Rose cow family on the top of his pedigree, and the Donna cow family on the bottom, the maternal strength is huge. The influence of G-Man and Resource in the middle of his pedigree give 95L his stoutness and body mass. (Pictured right)→.

magnum

BELVIN MAGNUM 4164

Owned with IL Ranch. Belvin Magnum 4164 was a feature bull in our 2025 Bull Sale, selling to IL Ranch. We retained half walking rights in Magnum, to keep the power, performance and outcross pedigree of Basin Jameson 1076 in our program. The influence of the potent Lady Blossom 23'12 donor female adds maternal, fleshing ability and efficiency. Magnum is a big topped, big boned, impressive looking herdsire (Pictured below ↘).

upcoming sires

BA



BW	WW	YW	MK	CED	CEM	CW	MB	REA	FT
2	67	115	25	-1	5	53	0.23	0.54	0.033



BW	WW	YW	MK	CED	CEM	CW	MB	REA	FT
3.3	67	106	22	1.0	6	39	0.81	0.72	-0.013

BA october 2026

THE BELVIN ANGUS & GUESTS
F E M A L E S A L E





Driving the science of better breeding

There's little room for error in the cattle business. Producers need the most advanced information to make smart selection decisions, and Angus Genetics Inc. (AGI) provides it through genomic-enhanced expected progeny differences (GE-EPDs).

GE-EPDs have become the industry standard for herd improvement, building on decades of science-backed genetic evaluation tools originated and maintained through the American Angus Association*, home to the largest and ever-growing single-breed beef cattle database.

EPDs that traditionally contained all pedigree, performance and progeny information now also include results from available genomic, or DNA, tests. Breeders who use genomic technology give buyers access to AGI-generated GE-EPDs that provide:

Increased predictability and decreased risk for young and unproven animals due to enhanced accuracy of EPDs

Better characterization of genetics for difficult-to-measure performance traits (such as carcass traits, maternal traits and feed efficiency)

The ability to make more rapid progress for traits that are important to you, due to:

- more accurate selection
- easier identification of genetic outliers
- the ability to propagate young animals with confidence earlier in their lives

In fact, GE-EPDs on unproven animals have the same amount of accuracy as if they had recorded 10-36 calves, depending on the trait. That's valuable insight, offered regularly through the breed's weekly national cattle evaluation.

Trait	Progeny Equivalent	Trait	Progeny Equivalent
Calving Ease Direct	26	Heifer Pregnancy	17
Birth Weight	23	Calving Ease Maternal	20
Weaning Weight	27	Milk	36
Yearling Weight	23	Mature Weight	15
Dry Matter Intake	12	Mature Height	9
Scrotal Circumference	15	Carcass Weight	15
Docility	12	Yearling Height	17
Claw Set	10	Carcass Marbling	11
Foot Angle	10	Carcass Ribeye	17
		Carcass Fat	14

How do you know if EPDs are genomic-enhanced?

Ask your breeder, refer to the registration paper, or look for the AGI GE-EPD logo, Angus GS™ powered by partner Neogen GeneSeek or the HD50k by partner Zoetis. These images indicate animals for which low-density or high-density genomic testing has been conducted and incorporated by AGI into GE-EPDs



www.angus.org



THE BRAND THAT PAYS™



To capture premiums from your registered Angus investment, target the *Certified Angus Beef®* brand. Since 1997, packers have paid more than \$1 billion in grid premiums for cattle that meet the *Certified Angus Beef®* brand's carcass specifications. If you raise the best, you deserve to be paid the best.

VOLUME BUYER *East & West Ranching
Co. Ltd., Manyberries, AB – 19 BULLS*

BA

high sellers in 2025



BELVIN MARKSMAN 4063 *Shaw Caldwell*
11432 son out of Belvin Torcaza 143'22
(Belvin May City 0136) to Richmond
Ranch, Rumsey, AB for \$60,000



BELVIN MILWAUKEE 4132 *Shaw Caldwell*
11432 son out of Belvin Queen 37'22
(Baldridge Vegas Go82) to CMT Farms,
North Battleford, SK for \$40,000



BELVIN MODELO 4032 *Woodhill Revival*
Ho28 son out of Belvin Queen 37'19
(Baldridge Mercenary Do02) to Greenwood
Angus, Lloydminster, SK for \$28,000



BELVIN METRO 4042 Shaw Caldwell 11432 son out of W Sunrise Exquisite Lady 734K (SSS Deuce 2H) to Bellshill Angus, Lougheed, AB for \$23,000



BELVIN MILK RIVER 4033 Shaw Caldwell 11432 son out of Belvin Blackbird 153'21 (Baldrige Vegas G082) to Anchor 1 Angus, Mayerthorpe, AB for \$22,000



BELVIN MANHATTAN 4199 Riverbend Lawman J053 son out of Belvin Lady Di 89'15 (Belvin Velasquez 203'11) to Double F Farms, Kirriemuir, AB for \$21,000



BELVIN MANCHESTER 4157 Shaw Caldwell 11432 son out of Belvin Lady Di 19'20 (Baldrige Mercenary Doo2) to East & West Ranching Co. Ltd., Manyberries, AB for \$20,000



BELVIN MILESTONE 4116 Hart Limit Up 0506 son out of Belvin Georgina 189'21 (EXAR Pillar 9723B) to Steinreich Ranch, Demmitt, AB for \$20,000



BELVIN MAKER'S MARK 4023 Heiken Trademark 1018 son out of Belvin Georgina 21'22 (Sitz Major 707F) to East & West Ranching Co. Ltd., Manyberries, AB for \$20,000



BELVIN MAGNUM 4164 Basin Jameson 1076 son out of Belvin Lady Blossom 23'12 (SAV Pioneer 7301) to IL Ranch, Keremeos, BC for \$20,000



BELVIN MCGREGOR 4234 Shaw Caldwell 11432 son out of Belvin Georgina 193'18 (Connealy Earnan 076E) to East & West Ranching Co. Ltd., Manyberries, AB for \$19,500



BELVIN REVIVAL 4007 Woodhill Revival Ho28 son out of Belvin Barbra 23'22 (Baldrige Mercenary Doo2) to Elkink Ranch, Cawston, BC for \$19,000



BELVIN LANDMARK 3404 Heiken Trademark 1018 son out of Belvin Lady Blossom 411'21 (Brooking Roll Call 9045) to Angus El Sauz, San Juan de Los Lagos, MX for \$19,000



BELVIN MARTINGALE 4079 Shaw Caldwell 11432 son out of Duralta 8020 Pride 38H (Merit McLaren 8020F) to Klaudt Ranching, Sever Persons, AB for \$18,000



LADY BLOSSOM 10'24 Heiken Trademark 1018 daughter out of Belvin Lady Blossom 38'22 (Brooking Roll Call 9045) to BJ Cattle Co., Del Bonita, AB for \$30,000 (Angus Collection Sale)



BA

thank you
for your SUPPORT OF
OUR PROGRAM







Return undelivered mail to:
Belvin Angus, P.O. Box 6134,
Innisfail, Alberta T4G 1S8
www.belvinangus.com