

13TH ANNUAL

BA



Belvin Angus

MARCH 4, 2025 AT THE FARM, INNISFAIL, ALBERTA

BULL  SALE



Welcome to the 2025 Belvin Angus Bull and Female Sale. This year marks the 13th Bull Sale we've held on the farm, and 46 years since Mabel and Gavin started in the Angus breed. The prices we are seeing for commercial cattle now are unlike almost anything we've seen in that time. The current political climate causes uncertainty, but there was more grass and feed put up last year than years previous, and the continued shortage of cattle bodes well for this current peak in the cycle to continue. Hopefully 2025 can bring a spring and summer with excess moisture, and heifer retention can help restock the nations cowherd.

We are extremely excited to offer this set of bulls. Its cliché to say, but the quality of this year's group is the deepest we've had, while also offering more bulls than ever before. Our cowherd continues to grow in numbers, and this allows us to increase the quality and quantity of bulls offered. We believe that consistency is one of the biggest keys in this industry. In the commercial world it isn't about how good the top few individuals are, it is about how even and good is the whole group. The strength of the bottom end is as important as the strength of the top end. Almost 95% of the bulls in this sale are out of a sire we either own or raised, who has run with cows on our ranch. We have always felt that owning these bulls gives us a better idea of how they work and mature in real life. We spend countless hours searching for the best genetics we can find to bring to our customers, and we are really excited about the herdsire battery that we have assembled. The new sire groups on offer this year clicked extremely well with our cows. The group of 32 Caldwell sons is the largest sire group we've ever offered. We strive to produce bulls that have a solid foundation, being structurally sound and eye appealing, with good hair, scrotal size

and temperament. From this foundation, we can then add levels of calving ease, performance and carcass merit to the equation. There is so much information out there when it comes to breeding Angus cattle, we try and sort through all of that to make bulls that are balanced and work for our customers.

One thing we try to do is constantly take stock of what is important to our customers. With the dry conditions of the last number of years, where feed supplies are limited and expensive, the efficiency of a cowherd becomes more and more important. We want calves that perform and wean off heavy, out of cows that have a modest mature size and are low input cattle. We try to make our cows work the same as a lot of our customers cows work. Our cowherd is never fed any grain. From early September weaning until mid December, the mature cows eat banked coulee grass and drink from natural springs. The young cows graze cover crops, silage regrowth and stubble. The cows come home only because its time to calve. Grazing days are the most valuable days to any cowherd, and we try to maximize them. Our commercial customers make their living on the productivity and consistency of their cowherd, and we feel that we should be the same.

Our bulls are fed a forage-based ration. The bulls are fed a modest amount of grain, and we feel the bull's hair, semen tests, movement and feet reflect this. It is our opinion that feeding them in this manner allows them to show their true genetic potential. We don't creep feed our bulls, so their weaning weight is a reflection of their mother's milk and the bull's genetic ability to grow. The bulls are all semen tested, vet inspected and fully guaranteed. We stand behind the bulls 100%, and if there are any issues with a bull sold in the sale, we will make sure it is looked after.

WELCOME TO OUR 13TH ANNUAL BULL SALE



BA tuesday march 4

1:30PM AT THE FARM, INNISFAIL, ALBERTA

The yearling bulls were weaned the start of September and spent the next two and a half months in one large group in a 20 acre field. They were sorted into their pens in late November, where they remain until sale day. The extra age bulls come from a completely different management group of 50 cows. The cows in the summer calving window calve on pasture from late May until July. These summer born bulls are weaned in early January. They graze again from June to late November, at which point they are moved to the sale facility. These bulls haven't been offered for sale before, they are bred specifically to be sold as extra age bulls. There are feature bulls in both the yearling and extra age groups.

The sale will again feature a group of open heifers that represent the same sires and cow families as the bulls. We will be hosting our fall Female Sale this October, and these heifers offer a preview of what will be available in that sale.

We would like to invite you to our sale facility east of Bowden, on Tuesday, March 4th. The sale cattle are always available for viewing, so we encourage people to come look at them anytime before the sale. Feel

free to contact any of us to arrange a visit. We were very excited to welcome Raymond "Mayday" Turney to our staff last December. Raymond brings a wealth of experience in the purebred industry and we are happy to have him as a part of our operation. He is also knowledgeable on the offering. The sale consultants listed in the catalogue are all familiar with the offering, so contact any of them for information or assistance with bidding. Online bidding will once again be offered with DLMS. Videos of the bulls will be posted online in the weeks leading up to the sale, on our website and at DLMS.ca. We guarantee full satisfaction of any bulls that are purchased sight unseen.

In closing, we would like to sincerely thank all the customers and supporters of our program. The cattle industry is a people industry, and we are fortunate to be a part of it. We truly enjoy the relationships we have formed with some of the leading ranchers from across Western Canada, and we are humbled by the calibre of people we get to deal with.

Thank you and take care,

*Gavin & Mabel • Colton
Brendyn, Quinn and Ivy*



sale information

SALE LOCATION Exit from Queen Elizabeth #2 at Bowden. Go east 4 miles (6.4 km) on Highway 587 to Rge Rd 284, south 2 miles (3.2 km) to Twp Rd 342, east 1/2 mile (0.8 km). The sale location is on south side of road.



BELVIN ANGUS

Gavin, Mabel, and Colton Hamilton
Quinn, Brendyn, and Ivy Elliot
Box 6134 Innisfail, AB • T4G 1S8

HOME 403.224.2355 **GAVIN** 403.556.5246
COLTON 403.507.5416 **QUINN** 403.507.9142
MABEL 403.556.0127 **BRENDYN** 250.449.5071
RAYMOND 403.559.8235
belvinangus@xplornet.com
www.belvinangus.com

OFFERING 117 Yearling Angus Bulls
14 Extra Age Bulls
12 Open Purebred Angus Heifers
Viewing of sale cattle is welcome at any time

SCHEDULE Tuesday, March 4, 2025
9:00 am Cattle available for viewing
12:00 pm Complimentary lunch
1:30 pm *Belvin Thirteenth Annual Bull Sale*
by video in heated sale facility

VIDEOS View videos of all bulls online at
www.belvinangus.com



ONLINE VIEWING AND BIDDING The sale will be available for viewing and bidding through DLMS. ca. Log onto the website to sign up and if you have any problems, contact Mark Shologan 1.780.699.5082

sales staff

Ryan Dorran, Auctioneer 403.507.6483
Craig Flewelling, Ring Service 403.556.0515
Rod McLeod, Ring Service 403.540.7986
Mark Stock, Ring Service 403.357.8104

SALES REPRESENTATIVES

Bohrson Marketing
Scott Bohrson 403.370.3010
Rob Voice 306.270.608
Riley Bohrson 639.213.7777

OBI Livestock Ltd.
Mark Holowaychuk 403.896.4990
Roger Peters 403.828.9815

Cantrix Livestock
Dave Saretsky 403.896.9616

Southern Alberta Representative
Ty Streeter 403.601.0145

BC Representative
Clint Ellis 604.309.5355

Canadian Angus Association Representative
Myles Immerkar, CEO

DELIVERY Belvin Angus will deliver bulls free in Western Canada OR bring your own trailer and receive a \$100.00 discount on the purchase price of the bull. All bulls remaining at Belvin Angus must be insured. Insurance will be available.

TERMS Full terms and conditions listed on page 45.

SALE ACCOMMODATIONS

Best Western Inn (Olds) 403.556.5900
Ramada Inn (Olds) 403.556.8349
Days Inn (Innisfail) 403.227.4405
Super 8 (Innisfail) 403.227.6001



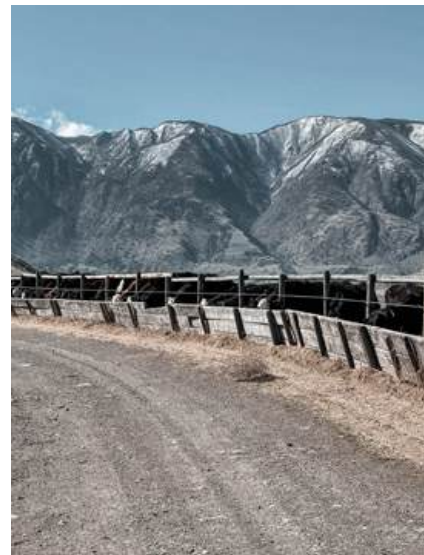
A 13th annual bull sale

MARCH 4, 2025 AT 1:30PM AT THE FARM, INNISFAIL, ALBERTA



BA





FROM PASTURE, TO RAIL, TO PLATE...

**Bred to be profitable in all
segments of the industry.**

MAVERICK SIRED CARCASS



PROUD TO WORK
WITH INDUSTRY
PARTNERS



reference **B** sires **A** caldwell

SHAW CALDWELL 11432 [32 SONS SELL]

Owned with Semex. Our never ending search for herdbulls lead us to Shaw Cattle Co. in Southern Idaho in 2023. Shaw Caldwell 11432 was one of those rare bulls that when you laid eyes on him, you instantly knew you needed to own him. Selected as the \$59,000, all-time High Seller from the notable Shaw program, Caldwell has done nothing but impress since then. His combination of calving ease, performance, scrotal, foot quality, body mass and style, in a mature frame that levels out to an acceptable and efficient level, is extremely impressive and hard to find. Not to mention, Caldwell is one of the most athletic and efficient breeders we've ever seen. This group of Caldwell sons is the largest sire group we've ever offered, yet likely the most consistent and exciting as well. The replacement heifer pen is populated with thirty five Caldwell daughters who are deep bodied, angular and getting more striking by the day. Sired by the popular Sitz Resilient 10208, and out of a full sister to Tehama Tahoe B767, Caldwell has a pedigree featuring some of the breeds most proven and tested genetics from the last decade. This summer, we were excited to welcome Semex as a partner on Caldwell, and he is causing a lot of excitement as one of their lead-off Angus sires. The Caldwell sire group features many exciting prospects, and is worth the trip to see.

| BW | WW | YW | MK | CED | CEM | CW | MB | REA | FT |
|------|----|-----|----|------|-----|----|------|------|------|
| -2.0 | 70 | 125 | 41 | 12.0 | 9.0 | 41 | 0.77 | 0.68 | .033 |

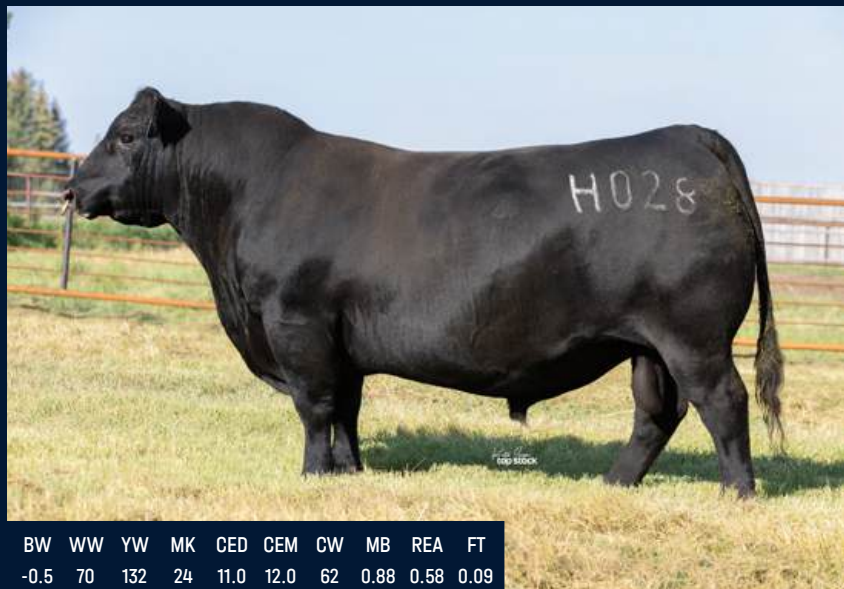


revival

WOODHILL REVIVAL H028 [18 SONS SELL]

Woodhill Revival H028 was the high selling bull in the 2021 Woodhill Farms sale at \$55,000. He is sired by the popular and deceased Woodhill Relevance and out of a donor female from the very maternal Woodhill program. The Revival calves are born easily yet show impressive growth and shape at an early age. Revival is a strong footed bull who has been admired by many visitors for his impressive phenotype. He also features leading EPD's across the board, with calving ease, growth, feed conversion and carcass quality. The Revival sons are extremely consistent in their type, with the length, shape and eye appeal of their father. The first Revival daughters have calved, and they are beautiful females: Feminine in their design with impeccable udder quality.

Owned with Canadian Sires and Woodhill Farms



trademark

HEIKEN TRADEMARK 1018 [14 SONS SELL]

Heiken Trademark 1018 is a surefire calving ease sire, who combines a CE EPD of +18 with a BW EPD of -4.9, both numbers that are in the top 1% of the breed. Two sets of Trademark calves have been born true to those numbers, making him an almost unmatched calving ease bull. Sired by the very popular Sitz Logo 12694, Trademark also has impressive growth, docility and fertility built into his pedigree. Phenotypically he is soft made with impressive muscle, and he breeds that consistently into his offspring. The consistency of the Trademark sire group, both for calving ease and type, is very impressive.



may city

BELVIN MAY CITY 0136 [10 SONS SELL]

Belvin May City 0136 was the highlight and High Seller of our 2021 Female Sale. His combination of awesome muscle shape, a soft middle, great feet, big scrotal and a commanding presence made May City a popular individual, not to mention his outcross pedigree. The dam of May City is a feature cow in our program, she's deep ribbed, wedge shaped and great footed with an awesome udder. The May City sons are dense made like him, strong footed and deep sided. May City daughters are doing an excellent job as well, with offspring highlighted in this sale.

Owned with Canadian Sires and Brooking Angus





| BW | WW |
|------|-------|
| 1.3 | 65 |
| YW | MK |
| 122 | 29 |
| CED | CEM |
| 1.0 | 2.0 |
| CW | MB |
| 32 | 1.12 |
| REA | FT |
| 1.03 | -.027 |

RIVERBEND LAWMAN J053 [11 SONS SELL] was selected from the 2022 Riverbend Ranches Sale as a balanced trait sire, who ranks near the top of the breed for CBI. Lawman is one of those elusive bulls who is over +1 for both marbling and REA, and he will add another level of carcass merit to our operation. The Lawman sons are rugged, muscular, good footed bulls, while the first Lawman daughters to calve have a maternal look with great udders. His combination of carcass quality and maternal ability is hard to pull off. Lawman has a different pedigree with two leading donor dams backing him maternally. Owned with Semex.



| BW | WW |
|------|------|
| 2.6 | 83 |
| YW | MK |
| 140 | 19 |
| CED | CEM |
| 0.0 | 6.0 |
| CW | MB |
| 67 | 0.72 |
| REA | FT |
| 0.52 | .007 |

HOOVER HIGH COUNTRY Z422 [5 SONS SELL] was the \$41,000 High Seller in the 2023 Hoover Angus Sale in Iowa. We unfortunately lost High Country to injury in his first breeding season, and seeing the quality of his first calf crop makes that sting even more. High Country had performance numbers at the top of the breed, to go along with bold muscle shape and excellent feet. The High Country sons on offer are that type, while some of our top replacement heifers are big volume High Country daughters. This will mark the only chance to buy sons of this impressive sire.



| BW | WW |
|------|------|
| 3.4 | 69 |
| YW | MK |
| 122 | 32 |
| CED | CEM |
| -5 | 0.0 |
| CW | MB |
| 50 | 0.54 |
| REA | FT |
| 0.42 | .054 |

BELVIN KOKANEE 2022 [8 SONS SELL] is a bull we selected to use ourselves, mostly based on the strength of his dam, Georgina 14'14, who is arguably our best and most influential cow of the past decade. Kokanee is a powerhouse sire, who himself has added frame, bone, muscle, scrotal and hair, and he has bred true to his type. The Kokanee sons on offer are some of the phenotypic standouts in the sale. Combining this body type and power with the maternal quality of 14'14 makes for an exciting sire group. Some outstanding Kokanee daughters will feature in our October sale.

| BW | WW | YW | MK | CED | CEM | CW | MB | REA | FT |
|-----|----|-----|----|-----|------|----|------|------|------|
| 0.5 | 63 | 106 | 28 | 7 | 15.0 | 49 | 1.17 | 0.72 | .001 |

HART LIMIT UP 0506 [15 SONS SELL] Hart Limit Up 0506 was purchased from Hart Angus in South Dakota in their 2021 sale. His dam is the most productive female in the history of their program. Limit Up is a maternal brother to the \$290,000 Hart Showcase owned by Semex, while full brothers to Limit Up are owned by ST Genetics and Grimmus Cattle. Limit Up is as well rounded a sire as we have. He moderates frame while adding volume and the muscle expression of his sire, Hoover No Doubt. Limit Up also improves scrotal, has an incredible foot, solid calving ease, and a Marb EPD of 1.17, ranking in the top 4% of the breed. Limit Up is a bull we appreciate more every day, who carves out a larger role with every breeding season.



limit
up
B
A



| BW | WW |
|------|------|
| 2.2 | 112 |
| YW | MK |
| 177 | 27 |
| CED | CEM |
| 9 | 9 |
| CW | MB |
| 90 | 1.68 |
| REA | FT |
| 0.85 | .003 |

BASIN JAMESON 1076 [5 SONS SELL] Basin Jameson 1076 was the \$600,000 sensation of the 2022 Sale Season. A bull with an almost unmatched combination of performance, carcass merit and foot quality, Jameson has become one of the widely used bulls in the breed. Selected for use as an outcross ET sire, Jameson did a great job siring bulls true to his projections, and daughters that are broody and powerful. We have another nice group of calves on the ground this year. These will be some of the first Jameson sons to sell in Canada.



| BW | WW |
|------|------|
| 1.2 | 77 |
| YW | MK |
| 129 | 28 |
| CED | CEM |
| 4.0 | 4.0 |
| CW | MB |
| 57 | 1.24 |
| REA | FT |
| 0.76 | .018 |

BELVIN HIGHMORE 0330 [1 SON SELLS] was our \$34,000 High Seller in 2022 to Semex and Yarrow Creek, who was unfortunately lost to injury. Our best Maverick son, Highmore was a standout phenotypically, who had solid performance and the awesome marbling of his sire. His dam is one of our most attractive and admired cows. Due to limited semen only one Highmore son sells this year, but the 2026 sale will feature several embryo calves from Highmore.



| BW | WW |
|------|------|
| 1.2 | 58 |
| YW | MK |
| 113 | 36 |
| CED | CEM |
| 4.0 | 6.0 |
| CW | MB |
| 44 | 0.68 |
| REA | FT |
| 0.52 | .027 |

BELVIN JUSTIFICATION 1402 [2 SONS SELL] was the lead off bull in our 2023 Sale, selling to our good friends at Lakeroad Angus. One of the best Vegas sons we've had, Justification is an all-around bull who sires good footed, balanced, docile offspring with muscle shape and style.



| BW | WW |
|------|-------|
| 4.3 | 77 |
| YW | MK |
| 137 | 19 |
| CED | CEM |
| 4.0 | 3.0 |
| CW | MB |
| 67 | 0.73 |
| REA | FT |
| 1.11 | -.002 |

RIVERBEND EVEREST H1231 [2 SONS SELL] was purchased as one of the sale features in the 2022 Riverbend Sale. Everest is a physically imposing bull, with impressive length and body shape in an attractive package. He is a high-performance bull who is solid across the board for growth and carcass quality. Everest is sired by the proven SS Niagara Z29, and he offers an outcross pedigree to much of the Canadian herdbook.



| BW | WW |
|------|------|
| 2.7 | 55 |
| YW | MK |
| 96 | 33 |
| CED | CEM |
| 1.0 | 5.0 |
| CW | MB |
| 26 | 0.04 |
| REA | FT |
| 0.16 | .035 |

BROOKING ROLL CALL 9045 [1 SON SELLS] is a bull with a maternally charged pedigree, with the foundation cow families of the Brooking program, Rose, Beauty and Annie K, all in his pedigree. Roll Call was a sale feature at the 2020 Brooking Sale, and his dam is the prolific Brooking Beauty 333 cow, the high earning cow in the history of the Brooking program. Roll Call daughters were featured in our 2024 Female Sale.



| BW | WW |
|------|------|
| -3.2 | 54 |
| YW | MK |
| 97 | 20 |
| CED | CEM |
| 17 | 15 |
| CW | MB |
| 46 | 0.98 |
| REA | FT |
| 0.53 | .073 |

BALDRIDGE MERCENARY D002 [4 SONS SELL] has been an extremely reliable calving ease sire, ranking in the top 1% of the breed for CE and BW EPD's. His calves are born small, grow fast and have excellent carcass merit. No other proven bull in the CAA database can match his combination of calving ease, WW, YW, milk and marbling. Mercenary was a foundation bull for us over the past decade.



BA yearling bulls

— TRAIT-BALANCED GENETIC PROGRESSION —

03

Belvin Exclusive 4003

MALE #2363240 DECEMBER 15 2023 BA 4003L PEN 4

LD Capitalist 316

MUSGRAVE 316 EXCLUSIVE

Musgrave Prim Lassie 163-386

S A V Pioneer 7301

BELVIN LADY BLOSSOM 23'12

Belvin Lady Blossom 62'06

Connealy Capitalist 028

LD Dixie Erica 2053

Musgrave Foundation

SCR Prim Lassie 80634

S A V Final Answer 0035

S A V Blackbird 5297

Peak Dot Stockman 254N

Belvin Lady Blossom 71'03

| BW | ADJ 205 | ADJ 365 | BW | WW | YW | MK | CED | CEM | CW | MARB | REA | FT |
|----|------------|------------|-----|----|----|----|-----|------|----|------|------|-------|
| 88 | 600 | 1020 | 1.4 | 52 | 92 | 20 | 4.0 | 13.0 | 37 | 0.24 | 0.59 | 0.006 |

EMBRYO TRANSFER

07

Belvin Revival 4007

MALE #2362244 DECEMBER 17 2023 BA 4007L PEN 4

Woodhill Relevance

WOODHILL REVIVAL H028

Woodhill Evergreen A43-F039

Baldridge Mercenary D002

BELVIN BARBARA 23'22

Belvin Erica 43'20

Connealy Confidence Plus

Woodhill Blackbird X197-Z7

Basin Payweight 1682

Woodhill Evergreen Y10-A43

EF Commando 1366

Baldridge Rachel A029

Sitz Major 707F

Belvin Erica 168'14

| BW | ADJ 205 | ADJ 365 | BW | WW | YW | MK | CED | CEM | CW | MARB | REA | FT |
|----|------------|------------|-----|----|-----|----|-----|-----|----|------|------|-------|
| 60 | 672 | 1322 | 0.2 | 63 | 115 | 20 | 6.0 | 9.0 | 61 | 0.83 | 1.11 | 0.015 |



BA 4003L



BA 4007L

08

Belvin Exclusive 4008

MALE #2363256 DECEMBER 17 2023 BA 4008L PEN 2

LD Capitalist 316

MUSGRAVE 316 EXCLUSIVE

Musgrave Prim Lassie 163-386

S A V Pioneer 7301

BELVIN LADY BLOSSOM 23'12

Belvin Lady Blossom 62'06

Connealy Capitalist 028

LD Dixie Erica 2053

Musgrave Foundation

SCR Prim Lassie 80634

S A V Final Answer 0035

S A V Blackbird 5297

Peak Dot Stockman 254N

Belvin Lady Blossom 71'03

| BW | ADJ 205 | ADJ 365 | BW | WW | YW | MK | CED | CEM | CW | MARB | REA | FT |
|----|------------|------------|-----|----|-----|----|------|-----|----|------|------|-------|
| 93 | 663 | 1155 | 4.0 | 62 | 107 | 21 | -5.0 | 8.0 | 48 | 0.21 | 0.38 | 0.035 |



BA 4008L

EMBRYO TRANSFER

09

Belvin Mercenary 4009

MALE #2362424 DECEMBER 18 2023 BA 4009L PEN 4

EF Commando 1366

BALDRIDGE MERCENARY D002

Baldridge Rachel A029

Poss Maverick

BELVIN LADY BLOSSOM 181'22

Belvin Lady Blossom 43'14

EF Complement 8088

Riverbend Young Lucy W1470

Baldridge Waylon W34

Baldridge Rachel X100

Basin Payweight 1682

Poss Pride 5163

Belvin Velasquez 203'11

Belvin Lady Blossom 76'12

| BW | ADJ 205 | ADJ 365 | BW | WW | YW | MK | CED | CEM | CW | MARB | REA | FT |
|----|------------|------------|------|----|----|----|------|-----|----|------|------|-------|
| 63 | 593 | 1130 | -1.1 | 45 | 71 | 24 | 12.0 | 6.0 | 29 | 0.79 | 0.87 | 0.061 |



We were very excited to welcome Raymond "Mayday" Turney to our staff last December. Raymond brings a wealth of experience in the purebred industry and we are happy to have him as a part of our operation.



BA 4022L

| BW | ADJ 205 | ADJ 365 | BW | WW | YW | MK | CED | CEM | CW | MARB | REA | FT |
|----|------------|------------|------|----|-----|----|------|-----|----|------|------|--------|
| 68 | 711 | 1374 | -3.0 | 72 | 130 | 32 | 12.0 | 9.0 | 59 | 0.29 | 0.99 | -0.026 |

22 Belvin Trademark 4022

MALE #2362447 DECEMBER 22 2023 BA 4022L PEN 4

Sitz Logo 12964

HEIKEN TRADEMARK 1018

JCH HKN Lucy 9397

LT Warden 8316

BELVIN EMBLYNETTE 271'22

Belvin Emblynette 201'12

Sitz Tebow 11860

Sitz Shauna 3152

JCH Chisum 7019

JCH Hazel 6155

Koupals B&B Titan 3013

LT Lucy 4078 TW

HF Kodiak 5R

SA V Emblynette 5486

Trademark 4022 is a stout made calving ease prospect with breed leading performance to match up with his top end calving numbers. 4022 is in the top 10% of the breed for ten different traits, including CE, BW, WW, YW, REA and Milk. The maternal grandam is still going strong at 13 years old and is a member of the famed Emblynette cow family. With his double-digit CE, strong performance, phenotype and maternal backing, 4022 is a complete package heifer bull.

23 Belvin Maker's Mark 4023

MALE #2362564 DECEMBER 22 2023 BA 4023L PEN 1

Sitz Logo 12964

HEIKEN TRADEMARK 1018

JCH HKN Lucy 9397

Sitz Major 707F

BELVIN GEORGINA 21'22

Belvin Georgina 024'14

Sitz Tebow 11860

Sitz Shauna 3152

JCH Chisum 7019

JCH Hazel 6155

Sitz Stellar 726D

Sitz Lady 383D

SA V Final Answer 0035

Belvin Georgina 81'03

Maker's Mark 4023 is another double-digit calving ease Trademark son. This docile heifer bull prospect has been a feature calf from the start, with the easy keeping, soft makeup that's typical of the Trademark sons. His Major sired dam is a member of our prominent Georgina cow family, with his maternal grandam being a CAA Elite Dam.



BA 4023L

| BW | ADJ 205 | ADJ 365 | BW | WW | YW | MK | CED | CEM | CW | MARB | REA | FT |
|----|------------|------------|------|----|----|----|------|-----|----|------|------|-------|
| 63 | 717 | 1228 | -3.1 | 52 | 86 | 28 | 11.0 | 9.0 | 36 | 0.28 | 0.22 | 0.075 |



BA 4024L

24 Belvin Mastercraft 4024

MALE #2362565 DECEMBER 24 2023 BA 4024L PEN 2

Woodhill Relevance

WOODHILL REVIVAL H028

Woodhill Evergreen A43-F039

Square B Atlantis 8060

BELVIN ANDRIA 122'22

Belvin Tres Marias Andria 7313

Connealy Confidence Plus

Woodhill Blackbird X197-Z7

Basin Payweight 1682

Woodhill Evergreen Y10-A43

SA V Rainfall 6846

Elbanna of Conanga 1209

Tres Marias 6301 Zorzal

Tres Marias 7358 LA Andria T/E

Just a heifer's first calf, Mastercraft 4024 is one of the high performing, power bulls in the sale. A bigger framed Revival son, his WW and YW EPD's are in the top 1% of the breed. The dam of 4024 is a beautiful uddered Atlantis daughter. Her mother is one of our best Argentinian bred donor females from the famed Tres Marias herd, who herself is an own daughter of the legendary Zorzal.

| BW | ADJ 205 | ADJ 365 | BW | WW | YW | MK | CED | CEM | CW | MARB | REA | FT |
|----|------------|------------|-----|----|-----|----|------|-----|----|------|------|-------|
| 88 | 803 | 1375 | 4.5 | 87 | 156 | 20 | -4.0 | 1.0 | 71 | 0.86 | 0.69 | 0.051 |

25 Belvin High Country 4025

MALE #2362566 DECEMBER 24 2023 BA 4025L PEN 2

Tehama Tahoe B767

HOOVER HIGH COUNTRY Z422

Miss Blackcap Ellston R199

Baldrige Discovery D121

BELVIN LADY BLOSSOM 241'21

Belvin Lady Blossom 166'12

Tehama Upward Y238

Tehama Mary Blackbird Y684

Hoover No Doubt

Miss Blackcap Ellston K317

Fortunes Conquest 224

Baldrige Lady X200

Belvin Tres Marias Patron 205

Belvin Lady Blossom 64'04



BA 4025L

| BW | ADJ 205 | ADJ 365 | BW | WW | YW | MK | CED | CEM | CW | MARB | REA | FT |
|----|------------|------------|-----|----|----|----|-----|-----|----|------|------|-------|
| 80 | 667 | 1189 | 1.8 | 51 | 84 | 23 | 2.0 | 3.0 | 35 | 0.31 | 0.39 | 0.006 |



BA 4028L

28

Belvin Mission 4028

MALE #2362749 DECEMBER 24 2023 BA 4028L PEN 1

Sitz Logo 12964

HEIKEN TRADEMARK 1018

JCH HKN Lucy 9397

Sitz Major 707F

BELVIN LADY BLOSSOM 178'22

Belvin Lady Blossom 159'15

Sitz Tebow 11860

Sitz Shauna 3152

JCH Chisum 7019

JCH Hazel 6155

Sitz Stellar 726D

Sitz Lady 383D

LLB Free Wheeler 268S

Belvin Lady Blossom 37'01

| BW | ADJ 205 | ADJ 365 | BW | WW | YW | MK | CED | CEM | CW | MARB | REA | FT |
|----|------------|------------|------|----|-----|----|------|------|----|------|------|-------|
| 70 | 774 | 1311 | -2.1 | 74 | 126 | 34 | 10.0 | 14.0 | 55 | 0.31 | 0.69 | 0.056 |

Mission 4028 is a high indexing Trademark son. 4028 has a very attractive look with added length of body and built in calving ease. This heifers first calf posted a big birth to weaning spread with just a 70 lb BW and a WW of 774 to ratio 117, ranking at the top of his contemporary group. Combining two of the elite sires in the breed Stellar and Logo, and an exceptional data set with elite predictions for calving ease, growth, and maternal traits, 4028 is a very valuable breeding piece.

29

Belvin Highmore 4029

MALE #2362750 DECEMBER 24 2023 BA 4029L PEN 3

Poss Maverick

BELVIN HIGHMORE 0330

Belvin 3E Black Angel 3'17

Sitz Major 707F

BELVIN QUEEN GEM 57'22

Belvin Queen Gem 4'18

Basin Payweight 1682

Poss Pride 5163

Soo Line Motive 9016

Werner Black Angel 1299

Sitz Stellar 726D

Sitz Lady 383D

EF Commando 1366

Belvin Queen Gem 75'16

| BW | ADJ 205 | ADJ 365 | BW | WW | YW | MK | CED | CEM | CW | MARB | REA | FT |
|----|------------|------------|-----|----|-----|----|-----|-----|----|------|------|-------|
| 73 | 762 | 1334 | 1.2 | 76 | 129 | 28 | 7.0 | 7.0 | 58 | 0.86 | 0.83 | 0.030 |



BA 4029L



BA 4030L

| BW | ADJ 205 | ADJ 365 | BW | WW | YW | MK | CED | CEM | CW | MARB | REA | FT |
|----|------------|------------|-----|----|-----|----|-----|-----|----|------|------|-------|
| 84 | 672 | 1396 | 1.3 | 70 | 129 | 31 | 8.0 | 5.0 | 46 | 0.92 | 0.22 | 0.049 |

30 Belvin Mafia 4030

MALE #2362752 DECEMBER 25 2023 BA 4030L PEN 1

Sitz Resilient 10208

SHAW CALDWELL 11432

Tehama Mary Blackbird D094

Poss Maverick

BELVIN LADY BLOSSOM 52'19

Belvin Lady Blossom 16'16

Sitz Stellar 726D

Sitz Miss Burgess 1856

Tehama Upward Y238

Tehama Mary Blackbird Y684

Basin Payweight 1682

Poss Pride 5163

B C Lookout 7024

Belvin Lady Blossom 35'14

Mafia 4030 is a powerfully made Caldwell son, with extra length and a big top. With WW and YW numbers in the top 10% of the breed, to go along with a YW ratio of 115, 4030 is one of the high performing bulls in the sale. His Maverick sired dam is a top producing young cow, with two sons already selling as sale features to Glenbar Ranching and Ellis Cattle Co.

31 Belvin Mica Creek 4031

MALE #2362753 DECEMBER 25 2023 BA 4031L PEN 1

Woodhill Relevance

WOODHILL REVIVAL H028

Woodhill Evergreen A43-F039

LT Warden 8316

BELVIN BARBARA 201'21

WWF FA Barbara 2Y

Connealy Confidence Plus

Woodhill Blackbird X197-Z7

Basin Payweight 1682

Woodhill Evergreen Y10-A43

Koupals B&B Titan 3013

LT Lucy 4078 TW

SA V Final Answer 0035

WWF Bismarck Barbara 18W

Mica Creek is a top end Revival son. This calving ease prospect combines a +10 CE and negative BW profile with impressive performance and a massive body type, being one of the soggiest made, stoutest Revival sons in the sale. His Warden sired dam goes back to a nice female purchased from Windy Willows Farms.



BA 4031L

| BW | ADJ 205 | ADJ 365 | BW | WW | YW | MK | CED | CEM | CW | MARB | REA | FT |
|----|------------|------------|------|----|-----|----|------|------|----|------|------|-------|
| 81 | 738 | 1388 | -0.3 | 70 | 125 | 22 | 10.0 | 12.0 | 52 | 0.48 | 0.92 | 0.016 |



32

Belvin Modelo 4032

MALE #2362755 DECEMBER 25 2023 BA 4032L PEN 1

Woodhill Relevance

WOODHILL REVIVAL H028

Woodhill Evergreen A43-F039

Baldrige Mercenary Doo2

BELVIN QUEEN 37'19

Belvin Queen 177'16

Connealy Confidence Plus

Woodhill Blackbird X197-Z7

Basin Payweight 1682

Woodhill Evergreen Y10-A43

EF Commando 1366

Baldrige Rachel A029

Belvin Velasquez 203'11

Belvin Queen 144'10

Modelo 4032 is a true sale feature and one of the elite calving ease prospects you will find anywhere this spring. 4032 has a striking phenotype, being thick made, long bodied and nice fronted with strong feet. 4032 has a +17 CE EPD to rank at the top of the breed. Maybe the best part of 4032 is his amazing Mercenary sired dam. Known as our "Fertility Queen", the dam of 4032 has now had 5 calves born in a one-week calving window. Other offspring of this future donor cow include potentially our best 2022 born female, who is the dam of the 4132 bull in this sale, and a full brother to Modelo, who was a High Seller in our 2024 Sale to Lucky Springs Farms.

| BW | ADJ 205 | ADJ 365 | BW | WW | YW | MK | CED | CEM | CW | MARB | REA | FT |
|----|------------|------------|------|----|-----|----|------|------|----|------|------|-------|
| 85 | 658 | 1352 | -0.6 | 62 | 116 | 28 | 17.0 | 14.0 | 60 | 0.40 | 0.75 | 0.082 |

Revival H028 SIRE



Mercenary Doo2 MATERNAL GRANDSIRE



Loan Shark 3027 FULL BROTHER





BA 4033L

| BW | ADJ 205 | ADJ 365 | BW | WW | YW | MK | CED | CEM | CW | MARB | REA | FT |
|----|------------|------------|-----|----|-----|----|-----|-----|----|------|------|--------|
| 72 | 687 | 1278 | 0.3 | 64 | 109 | 36 | 5.0 | 5.0 | 40 | 0.49 | 0.53 | -0.008 |

33

Belvin Milk River 4033

MALE #2362756 DECEMBER 25 2023 BA 4033L PEN 1

Sitz Resilient 10208

SHAW CALDWELL 11432

Tehama Mary Blackbird D094

Baldrige Vegas G082

BELVIN BLACKBIRD 153'21

Perrot Blackbird 45F

Sitz Stellar 726D

Sitz Miss Burgess 1856

Tehama Upward Y238

Tehama Mary Blackbird Y684

Spring Cove Reno 4021

Baldrige Isabel Y69

S A V Short Cut 6088

Town N Country Blackbird 37C

Milk River 4033 is another low birthweight Caldwell son who is impressive for his stoutness and type. The dam of 4033 is a beautiful Vegas daughter, a feminine, deep ribbed cow with a perfect udder, typical of her Y69 lineage. The Caldwell x Vegas cross should leave a set of excellent replacement females.

34

Belvin Lawman 4034

MALE #2362758 DECEMBER 25 2023 BA 4034L PEN 2

S S Enforcer E812

RIVERBEND LAWMAN J053

Spruce Mtn Rita 8102

HF Junction 18B

BELVIN LADY BLOSSOM 98'18

Belvin Lady Blossom 37'15

Sydgen Enhance

S S Miss Daybreak K011 3K17

Baldrige Colonel C251

Black Gold Rita 527

Young Dale Yohann 39Y

HF Elsiemere 106W

HF El Tigre 28U

Belvin Lady Blossom 14'09

| BW | ADJ 205 | ADJ 365 | BW | WW | YW | MK | CED | CEM | CW | MARB | REA | FT |
|----|------------|------------|-----|----|----|----|------|------|----|------|------|-------|
| 90 | 661 | 1302 | 2.2 | 48 | 91 | 38 | -2.0 | -2.0 | 29 | 0.75 | 0.75 | 0.017 |

38

Belvin Mercenary 4038

MALE #2362762 DECEMBER 26 2023 BA 4038L PEN 3

EF Commando 1366

BALDRIDGE MERCENARY D002

Baldrige Rachel A029

Sitz Major 707F

BELVIN LADY 94'22

Belvin Lady 106'17

EF Complement 8088

Riverbend Young Lucy W1470

Baldrige Waylon W34

Baldrige Rachel X100

Sitz Stellar 726D

Sitz Lady 383D

Merit Cast Iron 5094C

Ring Creek Super Lady 24Z

| BW | ADJ 205 | ADJ 365 | BW | WW | YW | MK | CED | CEM | CW | MARB | REA | FT |
|----|------------|------------|-----|----|-----|----|-----|-----|----|------|------|--------|
| 75 | 705 | 1296 | 2.1 | 69 | 113 | 11 | 3.0 | 9.0 | 55 | 0.75 | 0.99 | -0.031 |



BA 4034L



BA 4038L



41

Belvin Trademark 4041

MALE #2362765 DECEMBER 27 2023 BA 4041L PEN 4

Sitz Logo 12964

HEIKEN TRADEMARK 1018

JCH HKN Lucy 9397

Baldrige Vegas Go82

BELVIN ERICA 66'22

Belvin Erica 56'17

Sitz Tebow 11860

Sitz Shauna 3152

JCH Chisum 7019

JCH Hazel 6155

Spring Cove Reno 4021

Baldrige Isabel Y69

HF Syndicate 65B

Belvin Erica 111'15

| BW | ADJ 205 | ADJ 365 | BW | WW | YW | MK | CED | CEM | CW | MARB | REA | FT |
|----|------------|------------|------|----|-----|----|-----|------|----|------|------|-------|
| 85 | 713 | 1274 | -1.6 | 72 | 119 | 32 | 9.0 | 14.0 | 55 | 0.17 | 0.72 | 0.014 |

42

Belvin Metro 4042

MALE #2362766 DECEMBER 28 2023 BA 4042L PEN 1

Sitz Resilient 10208

SHAW CALDWELL 11432

Tehama Mary Blackbird Dog4

SSS Deuce 2H

W SUNRISE EXQUISITE LADY 734K

W Sunrise Exquisite Lady 572H

Sitz Stellar 726D

Sitz Miss Burgess 1856

Tehama Upward Y238

Tehama Mary Blackbird Y684

Peak Dot Attractive 186F

U-2 Rosebud 157C

PM Executive Decision 5'17

LLB Exquisite Lady 318B

Another of the feature calving ease bulls, always easy to find for his proudness, Metro 4032 is an eye appealing, good footed, athletic Caldwell son with a -1.1 BW EPD. The dam of 4032 was purchased from W Sunrise and is an attractive, nice uddered cow who did a great job on her first calf.

| BW | ADJ 205 | ADJ 365 | BW | WW | YW | MK | CED | CEM | CW | MARB | REA | FT |
|----|------------|------------|------|----|-----|----|-----|------|----|------|------|-------|
| 65 | 684 | 1273 | -1.0 | 59 | 107 | 34 | 9.0 | 11.0 | 34 | 0.51 | 0.68 | 0.038 |





BA 4043L

43 Belvin Midwest 4043

MALE #2362844 DECEMBER 28 2023 BA 4043L PEN 1

Sitz Resilient 10208

SHAW CALDWELL 11432

Tehama Mary Blackbird D094

Musgrave Sky High 1535

BELVIN LADY BLOSSOM 113'19

Belvin Lady Blossom 170'17

Sitz Stellar 726D

Sitz Miss Burgess 1856

Tehama Upward Y238

Tehama Mary Blackbird Y684

Musgrave Big Sky

FLAG Queen W 00649

Belvin Velasquez 203'11

Belvin Lady Blossom 9'11

Midwest 4043 is a front-end Caldwell son featuring CE and BW EPD's in the top 5% of the breed. 4043 possesses the length, soundness and athletic ability that's typical of the Caldwell sire group. The dam of 4043 is one of the top cows from the 2019 calf crop. Two previous sons have sold through the sale to Blue Ridge Colony. 4043 will be an easy calving bull who sires growthy offspring and great replacement females.

| BW | ADJ 205 | ADJ 365 | BW | WW | YW | MK | CED | CEM | CW | MARB | REA | FT |
|----|------------|------------|------|----|-----|----|------|-----|----|------|------|-------|
| 78 | 674 | 1351 | -1.2 | 57 | 100 | 39 | 12.0 | 6.0 | 47 | 0.33 | 0.77 | 0.011 |

48 Belvin Trademark 4048

MALE #2362860 DECEMBER 28 2023 BA 4048L PEN 3

Sitz Logo 12964

HEIKEN TRADEMARK 1018

JCH HKN Lucy 9397

Poss Maverick

BELVIN LADY BLOSSOM 218'22

Belvin Lady Blossom 134'14

Sitz Tebow 11860

Sitz Shauna 3152

JCH Chisum 7019

JCH Hazel 6155

Basin Payweight 1682

Poss Pride 5163

Belvin Velasquez 203'11

Belvin Lady Blossom 87'10



BA 4048L

| BW | ADJ 205 | ADJ 365 | BW | WW | YW | MK | CED | CEM | CW | MARB | REA | FT |
|----|------------|------------|-----|----|-----|----|-----|------|----|------|------|-------|
| 79 | 781 | 1331 | 0.0 | 82 | 130 | 29 | 7.0 | 12.0 | 57 | 0.50 | 0.41 | 0.035 |



BA 4053L

| BW | ADJ 205 | ADJ 365 | BW | WW | YW | MK | CED | CEM | CW | MARB | REA | FT |
|----|------------|------------|-----|----|-----|----|-----|-----|----|------|------|--------|
| 80 | 694 | 1365 | 0.9 | 69 | 116 | 24 | 4.0 | 7.0 | 41 | 0.43 | 0.52 | -0.001 |

53

Belvin Meridian 4053

MALE #2363060 DECEMBER 29 2023 BA 4053L PEN 1

Sitz Resilient 10208

SHAW CALDWELL 11432

Tehama Mary Blackbird D094

HF Junction 18B

BELVIN QUEEN 24'18

JS Queen 101

Sitz Stellar 726D

Sitz Miss Burgess 1856

Tehama Upward Y238

Tehama Mary Blackbird Y684

Young Dale Yohann 39Y

HF Elsiemere 106W

HF Tiger 5T

JS Queen 947

A favourite since birth, Meridian 4053 is one of the elite bulls in the sale, with an impressive phenotype, being deep ribbed, heavy muscled, dense made and good footed. The dam of 4053 has been a hard-working cow with a stellar production record. A maternal brother was a sale highlight to Wheatland Colony in 2023, while another son sold to Lake Creek Ranch. A maternal sister to 4053 is one of the very best first calving females this year and is a sight to see. Phenotype, performance and maternal strength make 4053 a sale feature.

54

Belvin Missile 4054

MALE #2363062 DECEMBER 29 2023 BA 4054L PEN 1

Tehama Tahoe B767

HOOVER HIGH COUNTRY Z422

Miss Blackcap Ellston R199

HF Junction 18B

BELVIN LADY BLOSSOM 202'19

Belvin Lady Blossom 4'10

Tehama Upward Y238

Tehama Mary Blackbird Y684

Hoover No Doubt

Miss Blackcap Ellston K317

Young Dale Yohann 39Y

HF Elsiemere 106W

S A V Saint Anthony 5670

Belvin Lady Blossom 31'96

Missile 4054 is an attractive made, impressive son of High Country, who could be used on heifers. Due to his untimely death, the number of High Country sons are limited, but they are a sire group we wish was a lot bigger. The dam of 4054 has a nice start to her production career, with three previous sons selling to 2L Ranch, East & West Ranching Co. Ltd., and Hegedys Ranching.



BA 4054L

| BW | ADJ 205 | ADJ 365 | BW | WW | YW | MK | CED | CEM | CW | MARB | REA | FT |
|----|------------|------------|------|----|----|----|-----|-----|----|------|------|--------|
| 82 | 635 | 1229 | -0.8 | 49 | 79 | 18 | 8.0 | 5.0 | 26 | 0.38 | 0.40 | -0.022 |

55

Belvin Caldwell 4055

MALE #2372566 DECEMBER 29 2023 BA 4055L PEN 4

*Sitz Resilient 10208***SHAW CALDWELL 11432***Tehama Mary Blackbird Dog4**Poss Maverick***BELVIN GEORGINA 113'21***Belvin Georgina 21'15**Sitz Stellar 726D**Sitz Miss Burgess 1856**Tehama Upward Y238**Tehama Mary Blackbird Y684**Basin Payweight 1682**Poss Pride 5163**Belvin Tres Marias Patron 205**Belvin Georgina 21'13*

| BW | ADJ 205 | ADJ 365 | BW | WW | YW | MK | CED | CEM | CW | MARB | REA | FT |
|----|------------|------------|------|----|----|----|------|------|----|------|------|-------|
| 61 | 569 | 1142 | -3.5 | 48 | 89 | 29 | 13.0 | 11.0 | 13 | 0.71 | 0.23 | 0.049 |



Left to Right: Colton, Gavin, Brendyn – **Please call us with any questions about the bulls.**

59

Belvin Mistro 4059

MALE #2363265 DECEMBER 30 2023 BA 4059L PEN 4

*Sitz Resilient 10208***SHAW CALDWELL 11432***Tehama Mary Blackbird Dog4**Square B Atlantis 8060***BELVIN RUTH 120'22***J Square S Ellen 506C**Sitz Stellar 726D**Sitz Miss Burgess 1856**Tehama Upward Y238**Tehama Mary Blackbird Y684**S A V Rainfall 6846**Elbanna of Conanga 1209**Soo Line Motive 9016**Northern View Ruth 82Z*

| BW | ADJ 205 | ADJ 365 | BW | WW | YW | MK | CED | CEM | CW | MARB | REA | FT |
|----|------------|------------|-----|----|-----|----|-----|------|----|------|------|-------|
| 71 | 685 | 1296 | 0.1 | 73 | 123 | 40 | 8.0 | 11.0 | 42 | 0.65 | 0.67 | 0.013 |

Another Caldwell son and another feature calving ease bull, Mistro 4059 is an eye appealing bull who is solid across the board for calving ease, performance, scrotal, milk and HPG. The dam is an impressive Atlantis daughter who goes back to a future donor female purchased from J Square S at Agribition.



BA 4059L



60

Belvin Middle Fork 4060

MALE #2363266 DECEMBER 30 2023 BA 4060L PEN 1

Tehama Tahoe B767

HOOVER HIGH COUNTRY Z422

Miss Blackcap Ellston R199

Coleman Charlo 0256

BELVIN ERROLINE 17'19

Belvin 3E Erroline 101'17

Tehama Upward Y238

Tehama Mary Blackbird Y684

Hoover No Doubt

Miss Blackcap Ellston K317

O C C Paxton 730P

Bohi Abigale 6014

KR Cash 4003

KFC 839L Erroline 0184X

An elite sale highlight, Middle Fork 4060 is the feature High Country son in the group. Stout hipped, big middled and physically imposing, 4060 is impressive phenotypically. 4060 has been one of the standouts from weaning to yearling, with an ADJ YW of 1438 to ratio 128. His Charlo sired dam is a top young cow, who had a feature son to East & West Ranching Co. Ltd. in 2023. Maternal power, performance and good looks make 4060 an intriguing herd sire option.

| BW | ADJ 205 | ADJ 365 | BW | WW | YW | MK | CED | CEM | CW | MARB | REA | FT |
|----|------------|------------|-----|----|-----|----|-----|-----|----|------|------|-------|
| 87 | 666 | 1438 | 0.7 | 61 | 116 | 25 | 5.0 | 5.0 | 56 | 0.47 | 0.65 | 0.033 |

Vegas 2060 MATERNAL BROTHER



Charlo 0256 MATERNAL GRANDSIRE



Kash 4003 MATERNAL GREAT GRANDSIRE



62

Belvin Caldwell 4062

MALE #2363268 DECEMBER 31 2023 BA 4062L PEN 3

*Sitz Resilient 10208***SHAW CALDWELL 11432***Tehama Mary Blackbird Dog4**Baldrige Mercenary Doo2***BELVIN LADY BLOSSOM 65'19***Belvin Lady Blossom 154'15**Sitz Stellar 726D**Sitz Miss Burgess 1856**Tehama Upward Y238**Tehama Mary Blackbird Y684**EF Commando 1366**Baldrige Rachel A029**Duralta 56S Yellowstone 136X**Belvin Lady Blossom 67'11*

| BW | ADJ 205 | ADJ 365 | BW | WW | YW | MK | CED | CEM | CW | MARB | REA | FT |
|----|------------|------------|------|----|----|----|------|------|----|------|------|--------|
| 68 | 608 | 1202 | -2.0 | 48 | 86 | 35 | 16.0 | 13.0 | 22 | 0.52 | 0.58 | -0.010 |



63

Belvin Marksman 4063

MALE #2363269 DECEMBER 31 2023 BA 4063L PEN 1

*Sitz Resilient 10208***SHAW CALDWELL 11432***Tehama Mary Blackbird Dog4**Belvin May City 0136***BELVIN TORCAZA 143'22***Belvin Torcaza 14'20**Sitz Stellar 726D**Sitz Miss Burgess 1856**Tehama Upward Y238**Tehama Mary Blackbird Y684**Vermilion Reride F116**Belvin Georgina 121'17**Poss Maverick**Belvin Torcaza 75'18*

| BW | ADJ 205 | ADJ 365 | BW | WW | YW | MK | CED | CEM | CW | MARB | REA | FT |
|----|------------|------------|-----|----|-----|----|-----|-----|----|------|------|-------|
| 71 | 727 | 1361 | 1.0 | 71 | 120 | 24 | 6.0 | 6.0 | 35 | 0.74 | 0.64 | 0.012 |

The Caldwell sire group is exceptional, and Marksman 4063 has a case to make as the best one. A standout since he was a baby, 4063 is as deep sided, dense made and stout as any bull in the sale. With big scrotal, great feet and eye appeal, he is a complete bull phenotypically. Out of a beautiful first calving daughter of May City, 4063 is backed by one of our best Argentinian cow families. A maternal sister to the dam of 4063 was a 2024 Female Sale feature to Frank Gutierrez, David Perez and Isaac Gomez. Phenotype, top performance numbers, strong carcass data, structural integrity and maternal quality make 4063 an elite sale feature.



BA 4063L

top stock



BA 69M

| BW | ADJ 205 | ADJ 365 | BW | WW | YW | MK | CED | CEM | CW | MARB | REA | FT |
|----|------------|------------|------|----|-----|----|------|-----|----|------|------|-------|
| 83 | 673 | 1351 | -0.7 | 54 | 110 | 25 | 10.0 | 6.0 | 44 | 0.66 | 0.48 | 0.064 |

69

Belvin Militant 4069

MALE #2363291 JANUARY 01 2024 BA 69M PEN 3

Woodhill Relevance

WOODHILL REVIVAL H028

Woodhill Evergreen A43-F039

Sitz Major 707F

BELVIN QUEEN 35'20

Belvin Queen 144'10

Connealy Confidence Plus

Woodhill Blackbird X197-Z7

Basin Payweight 1682

Woodhill Evergreen Y10-A43

Sitz Stellar 726D

Sitz Lady 383D

Sunny Dynasty 13R

Belvin Queen 17'04

70

Belvin Mainstream 4070

MALE #2363292 JANUARY 01 2024 BA 70M PEN 2

Square B Atlantis 8060

BELVIN KOKANEE 2022

Belvin Georgina 14'14

Poss Maverick

BELVIN TORCAZA 14'20

Belvin Torcaza 75'18

SA V Rainfall 6846

Elbanna of Conanga 1209

Belvin Tres Marias Patron 205

Belvin Georgina 33'12

Basin Payweight 1682

Poss Pride 5163

Belvin Velasquez 203'11

Belvin Tres Maria Torcaza 2910

Militant 4069 is a top tier Revival son, with the typical Revival look, possessing length, shape and an attractive front end. This feature heifer bull prospect is a double-digit CE, negative BW bull who also has solid performance and feed conversion ability. The dam is one of our top Major daughters, who had a feature son to Langco Land and Cattle in 2023. She comes from the same maternal line as the dam of the feature lot 4032 bull.

Mainstream 4070 is a powerful and heavy boned individual, typical of the Kokanee sire group. The dam of 4070 is a front-end young cow, who is also the maternal grandam of the feature lot 4063 bull. 4070 combines the performance of Kokanee with the marbling and carcass quality of Maverick to make a bull who will sire a profitable set of steer calves.



BA 70M

| BW | ADJ 205 | ADJ 365 | BW | WW | YW | MK | CED | CEM | CW | MARB | REA | FT |
|----|------------|------------|-----|----|-----|----|------|------|----|------|------|-------|
| 96 | 741 | 1338 | 3.2 | 70 | 116 | 27 | -7.0 | -4.0 | 53 | 0.62 | 0.88 | 0.042 |



Georgina 121'17 DAM



BA 73M

| BW | ADJ 205 | ADJ 365 | BW | WW | YW | MK | CED | CEM | CW | MARB | REA | FT |
|----|------------|------------|-----|----|----|----|-----|-----|----|------|------|-------|
| 81 | 722 | 1309 | 0.5 | 49 | 80 | 29 | 6.0 | 9.0 | 16 | 0.62 | 0.33 | 0.007 |

73

Belvin Motley Crue 4073

MALE #2363295 JANUARY 01 2024 BA 73M PEN 1

Sitz Resilient 10208

SHAW CALDWELL 11432

Tehama Mary Blackbird D094

HF Syndicate 65B

BELVIN GEORGINA 121'17

Belvin Georgina 45'15

Sitz Stellar 726D

Sitz Miss Burgess 1856

Tehama Upward Y238

Tehama Mary Blackbird Y684

HF Syndicate 213Z

HF Blackbird 97S

Belvin Panic Switch 2'11

Belvin Georgina 60'00

74

Belvin Mayton 4074

MALE #2363296 JANUARY 01 2024 BA 74M PEN 2

Vermilion Reride F116

BELVIN MAY CITY 0136

Belvin Georgina 121'17

Belvin Panic Switch 2'11

BELVIN MARYLEE 5'16

Belvin Marylee 15'14

Vermilion Re-Ride

Vermilion Lucy 5087

HF Syndicate 65B

Belvin Georgina 45'15

S A V Pioneer 7301

Belvin Lady Blossom 14'09

Belvin Tres Marias Patron 205

Belvin Marylee 105'12

A sale feature and one of the most maternally charged bulls in the sale, Motley Crue 4073 is a Caldwell son who is also a maternal brother to May City. His dam Georgina 121'17, owned with KT Ranches, is one of the leading donors in our operation, being a deep bodied, angular cow with impeccable feet and udder quality. 4073 is a long bodied, smooth made, athletic bull with excellent feet, big scrotal and a herd bull presence to him.

A feature May City son, Mayton 4074 is a bull with impressive performance and breed character who was a favorite all last summer. His dam is a productive Panic Switch daughter who has had daughters sell to Pahl Livestock, Horseguard Angus and Manuel Herrera of Mexico.



BA 74M

| BW | ADJ 205 | ADJ 365 | BW | WW | YW | MK | CED | CEM | CW | MARB | REA | FT |
|----|------------|------------|-----|----|-----|----|-----|-----|----|------|------|--------|
| 98 | 751 | 1279 | 2.4 | 57 | 101 | 18 | 0.0 | 0.0 | 33 | 0.57 | 0.71 | -0.002 |

79

Belvin Martingale 4079

MALE #2363509 JANUARY 02 2024 BA 79M PEN 2

*Sitz Resilient 10208***SHAW CALDWELL 11432***Tehama Mary Blackbird Dog4**Merit McLaren 8020F***DURALTA 8020 PRIDE 38H***Duralta gC Pride 30F**Sitz Stellar 726D**Sitz Miss Burgess 1856**Tehama Upward Y238**Tehama Mary Blackbird Y684**BAR S Range Boss 4002**Merit Blacklass 6060D**Duralta Spring Fever 9C**Duralta 23Z Pride 75D*

| BW | ADJ 205 | ADJ 365 | BW | WW | YW | MK | CED | CEM | CW | MARB | REA | FT |
|----|------------|------------|-----|----|-----|----|-----|-----|----|------|------|-------|
| 86 | 738 | 1383 | 0.6 | 67 | 122 | 35 | 6.0 | 6.0 | 38 | 0.44 | 0.58 | 0.031 |

81

Belvin Caldwell 4081

MALE #2363510 JANUARY 02 2024 TWIN BA 81M PEN 3

*Sitz Resilient 10208***SHAW CALDWELL 11432***Tehama Mary Blackbird Dog4**Vermilion Reride F116***BELVIN LADY BLOSSOM 158'20***Belvin Lady Blossom 42'15**Sitz Stellar 726D**Sitz Miss Burgess 1856**Tehama Upward Y238**Tehama Mary Blackbird Y684**Vermilion Re-Ride**Vermilion Lucy 5087**HF El Tigre 28U**Belvin Lady Blossom 29'08*

| BW | ADJ 205 | ADJ 365 | BW | WW | YW | MK | CED | CEM | CW | MARB | REA | FT |
|----|------------|------------|-----|----|-----|----|-----|-----|----|------|------|-------|
| 55 | 648 | 1257 | 0.3 | 71 | 123 | 33 | 9.0 | 8.0 | 48 | 0.70 | 0.39 | 0.058 |

Caldwell 4082 is a surefire calving ease bull who comes in a bigger frame than some of the other calving ease options. This Caldwell son has the thickness and dense makeup that is typical of the sire group. The dam is a top young Charlo daughter who has been designated a CAA elite dam through her first 4 calves. Typical of the Charlo line she is feminine and maternal with great udder quality.

82

Belvin Caldwell 4082

MALE #2363511 JANUARY 02 2024 BA 82M PEN 2

*Sitz Resilient 10208***SHAW CALDWELL 11432***Tehama Mary Blackbird Dog4**Coleman Charlo 0256***BELVIN RITA 7'19***Belvin 3E Rita 23'17**Sitz Stellar 726D**Sitz Miss Burgess 1856**Tehama Upward Y238**Tehama Mary Blackbird Y684**O C C Paxton 730P**Bohi Abigale 6014**Belvin Tres Marias Patron 205**Willow Rita U12*

BA 82M

| BW | ADJ 205 | ADJ 365 | BW | WW | YW | MK | CED | CEM | CW | MARB | REA | FT |
|----|------------|------------|------|----|-----|----|------|-----|----|------|------|-------|
| 72 | 690 | 1373 | -1.4 | 57 | 105 | 35 | 10.0 | 9.0 | 30 | 0.51 | 0.77 | 0.017 |



BA 86M

86

Belvin Militia 4086

MALE #2363515 JANUARY 03 2024 BA 86M PEN 1

EF Commando 1366

BALDRIDGE MERCENARY D002

Baldrige Rachel A029

Baldrige Vegas G082

BELVIN LADY BLOSSOM 177'22

Belvin Lady Blossom 52'19

EF Complement 8088

Riverbend Young Lucy W1470

Baldrige Waylon W34

Baldrige Rachel X100

Spring Cove Reno 4021

Baldrige Isabel Y69

Poss Maverick

Belvin Lady Blossom 16'16

Militia 4086 is an outstanding Mercenary son in the sale. Big middled, hairy and stout, 4086 is an impressive bull phenotypically who is strong across the board for performance and carcass merit. His WW, YW, SC, CW, Marb and REA are all in the top 10% of the breed. The dam of 4086 is a bigger framed daughter of Vegas, who has the typical udder quality and foot quality of a Vegas daughter. 4086 is one of the most complete bulls in the sale for balancing performance, carcass and maternal.

| BW | ADJ 205 | ADJ 365 | BW | WW | YW | MK | CED | CEM | CW | MARB | REA | FT |
|----|------------|------------|-----|----|-----|----|-----|-----|----|------|------|-------|
| 84 | 805 | 1453 | 2.2 | 79 | 131 | 28 | 3.0 | 0.0 | 66 | 1.00 | 0.89 | 0.045 |

87

Belvin Lawman 4087

MALE #2363516 JANUARY 03 2024 BA 87M PEN 2

S S Enforcer E812

RIVERBEND LAWMAN J053

Spruce Mtn Rita 8102

S A V Radiance 0801

GREENWOOD FAY JJP 14D

Timber Wolf 250 19Y

Sydgen Enhance

S S Miss Daybreak K011 3K17

Baldrige Colonel C251

Black Gold Rita 527

S A V Brilliance 8077

S A V Elba 801

Currie F250 65W

Timber Wolf Fay 13T



BA 87M

| BW | ADJ 205 | ADJ 365 | BW | WW | YW | MK | CED | CEM | CW | MARB | REA | FT |
|----|------------|------------|-----|----|-----|----|-----|------|----|------|------|-------|
| 88 | 687 | 1363 | 0.0 | 53 | 108 | 32 | 9.0 | 12.0 | 34 | 0.95 | 0.40 | 0.023 |

90 Belvin May City 4090

MALE #2363519 JANUARY 03 2024 BA 90M PEN 2

Vermilion Reride F116
BELVIN MAY CITY 0136
Belvin Georgina 121'17

S A V Pioneer 7301
BELVIN LADY BLOSSOM 59'18
Belvin Lady Blossom 37'01

Vermilion Re-Ride
Vermilion Lucy 5087
HF Syndicate 65B
Belvin Georgina 45'15
S A V Final Answer 0035
S A V Blackbird 5297
Leachman Right Time
Belvin Lady Blossom 66'94

| BW | ADJ 205 | ADJ 365 | BW | WW | YW | MK | CED | CEM | CW | MARB | REA | FT |
|----|------------|------------|-----|----|----|----|-----|-----|----|------|------|--------|
| 85 | 729 | 1300 | 1.4 | 46 | 74 | 29 | 4.0 | 9.0 | 32 | 0.29 | 0.68 | -0.009 |

91 Belvin Limit Up 4091

MALE #2363520 JANUARY 03 2024 BA 91M PEN 4

Hoover No Doubt
HART LIMIT UP 0506
Hart Whitney 3206

HF Junction 18B
BELVIN DUCHESS 225'19
Belvin Duchess 5'12

Mogck Bullseye
Miss Blackcap Ellston J2
Connealy Cavalry 1149
Hart Whitney 0244
Young Dale Yohann 39Y
HF Elsiemere 106W
Duralta 56S Yellowstone 136X
Belvin Duchess 115'06

| BW | ADJ 205 | ADJ 365 | BW | WW | YW | MK | CED | CEM | CW | MARB | REA | FT |
|----|------------|------------|------|----|----|----|-----|------|----|------|------|-------|
| 78 | 607 | 1084 | -0.4 | 48 | 73 | 18 | 8.0 | 14.0 | 28 | 0.56 | 0.51 | 0.035 |

92 Belvin Revival 4092

MALE #2363521 JANUARY 03 2024 BA 92M PEN 3

Woodhill Relevance
WOODHILL REVIVAL H028
Woodhill Evergreen A43-F039

Sitz Major 707F
BELVIN LADY BLOSSOM 104'22
Belvin Lady Blossom 37'14

Connealy Confidence Plus
Woodhill Blackbird X197-Z7
Basin Payweight 1682
Woodhill Evergreen Y10-A43
Sitz Stellar 726D
Sitz Lady 383D
S A V Bismarck 5682
Belvin Lady Blossom 31'96

| BW | ADJ 205 | ADJ 365 | BW | WW | YW | MK | CED | CEM | CW | MARB | REA | FT |
|----|------------|------------|-----|----|-----|----|-----|-----|----|------|------|-------|
| 80 | 733 | 1336 | 1.8 | 66 | 117 | 22 | 3.0 | 9.0 | 51 | 0.54 | 0.49 | 0.023 |

95 Belvin Caldwell 4095

MALE #2363522 JANUARY 03 2024 BA 95M PEN 3

Sitz Resilient 10208
SHAW CALDWELL 11432
Tehama Mary Blackbird D094

Belvin Zeppelin 17'12
BELVIN LADY BLOSSOM 55'14
Belvin Lady Blossom 23'12

Sitz Stellar 726D
Sitz Miss Burgess 1856
Tehama Upward Y238
Tehama Mary Blackbird Y684
Duralta 56S Yellowstone 136X
Belvin Duchess 67'10
S A V Pioneer 7301
Belvin Lady Blossom 62'06

| BW | ADJ 205 | ADJ 365 | BW | WW | YW | MK | CED | CEM | CW | MARB | REA | FT |
|----|------------|------------|-----|----|-----|----|-----|-----|----|------|------|-------|
| 76 | 672 | 1248 | 0.8 | 64 | 108 | 31 | 6.0 | 2.0 | 40 | 0.48 | 0.53 | 0.033 |





BA 96M

96

Belvin Metallic 4096

MALE #2363523 JANUARY 03 2024 BA 96M PEN 4

EF Commando 1366

BALDRIDGE MERCENARY D002

Baldrige Rachel A029

Baldrige Vegas G082

BELVIN BLACKBIRD 180'22

Bar-E-L Blackbird 27F

EF Complement 8088

Riverbend Young Lucy W1470

Baldrige Waylon W34

Baldrige Rachel X100

Spring Cove Reno 4021

Baldrige Isabel Y69

Ring Creek Flynn 25A

BAR-E-L Blackbird 76C

| BW | ADJ 205 | ADJ 365 | BW | WW | YW | MK | CED | CEM | CW | MARB | REA | FT |
|----|------------|------------|------|----|----|----|------|-----|----|------|------|-------|
| 69 | 646 | 1296 | -2.5 | 55 | 98 | 24 | 15.0 | 8.0 | 28 | 0.61 | 0.55 | 0.016 |

98

Belvin Maguey 4098

MALE #2368407 JANUARY 03 2024 BA 98M PEN 4

Sitz Resilient 10208

SHAW CALDWELL 11432

Tehama Mary Blackbird D094

Square B Atlantis 8060

BELVIN LADY BLOSSOM 130'22

Belvin Lady Blossom 54'12

Sitz Stellar 726D

Sitz Miss Burgess 1856

Tehama Upward Y238

Tehama Mary Blackbird Y684

S A V Rainfall 6846

Elbanna of Conanga 1209

Belvin Tres Marias Patron 205

Belvin Lady Blossom 45'10

| BW | ADJ 205 | ADJ 365 | BW | WW | YW | MK | CED | CEM | CW | MARB | REA | FT |
|----|------------|------------|------|----|-----|----|-----|-----|----|------|------|-------|
| 72 | 672 | 1281 | -1.2 | 60 | 110 | 26 | 9.0 | 3.0 | 31 | 0.49 | 0.46 | 0.048 |



BA 98M



100

Belvin Revival 4100

MALE #2363525 JANUARY 04 2024 BA 100M PEN 3

Woodhill Relevance

WOODHILL REVIVAL H028

Woodhill Evergreen A43-F039

Baldrige Discovery D121

BELVIN LADY BLOSSOM 159'20

Belvin Lady Blossom 76'12

Connealy Confidence Plus

Woodhill Blackbird X197-Z7

Basin Payweight 1682

Woodhill Evergreen Y10-A43

Fortunes Conquest 224

Baldrige Lady X200

Ring Creek El Tigre 9X

Belvin Lady Blossom 29'08

| BW | ADJ 205 | ADJ 365 | BW | WW | YW | MK | CED | CEM | CW | MARB | REA | FT |
|----|------------|------------|------|----|----|----|------|-----|----|------|------|-------|
| 75 | 684 | 1190 | -2.0 | 53 | 96 | 26 | 15.0 | 9.0 | 43 | 0.69 | 0.69 | 0.063 |

BA 100M

104

Belvin Middle Branch 4104

MALE #2363562 JANUARY 04 2024 BA 104M PEN 1

SA V Resource 1441

SA V TERRITORY 7225

SA V Emblynette 3293

Belvin Tres Marias Patron 205

BELVIN LADY BLOSSOM 166'12

Belvin Lady Blossom 64'04

Rito 707 of Ideal 3407 7075

SA V Blackcap May 4136

SA V 004 Density 4336

SA V Emblynette 7411

Alston 5384 Catriel F

Tres Marias 6764 Rosanegra 5214

Belvin Mercedes 32'02

Belvin Lady Blossom 40'01

Middle Branch 4104 is one of the intriguing herdsire options in the sale. The only son of the ever-popular Territory that we have had, 4104 resulted from a straw of sexed female semen that didn't produce a female. 4104 is one of the soggiest made bulls in the sale, who has excellent feet. His dam, a member of our donor program, is one of our best Patron daughters, who raised the \$27,000 High Seller in our 2020 Bull Sale. Her track record of production is long, with 7 prior sons selling through the bull sale.

| BW | ADJ 205 | ADJ 365 | BW | WW | YW | MK | CED | CEM | CW | MARB | REA | FT |
|----|------------|------------|-----|----|-----|----|-----|-----|----|------|------|-------|
| 90 | 729 | 1335 | 1.9 | 55 | 101 | 21 | 2.0 | 2.0 | 42 | 0.28 | 0.26 | 0.079 |



BA 104M



BA 106M

| BW | ADJ 205 | ADJ 365 | BW | WW | YW | MK | CED | CEM | CW | MARB | REA | FT |
|----|------------|------------|-----|----|-----|----|------|-----|----|------|------|--------|
| 94 | 738 | 1320 | 2.4 | 59 | 102 | 33 | -2.0 | 7.0 | 27 | 0.57 | 0.53 | -0.018 |

106 Belvin Lawman 4106

MALE #2363563 JANUARY 04 2024 BA 106M PEN 2

S S Enforcer E812

RIVERBEND LAWMAN J053

Spruce Mtn Rita 8102

HF Junction 18B

BELVIN LADY 157'16

Ring Creek Super Lady 24Z

Sydgen Enhance

S S Miss Daybreak K011 3K17

Baldrige Colonel C251

Black Gold Rita 527

Young Dale Yohann 39Y

HF Elsiemere 106W

SH Superman 0159

Lady of Ring Creek 45X

Lawman 4106 is one of the feature sons in the impressive Lawman sire group, and he is a bull who has been one of the impressive individuals for power and thickness from the start. The dam of 4106 goes back to a productive Ring Creek female. Maternal brothers to 4106 have sold to Birch Meadows and Dean & Lesley Lovell, while a maternal sister sold to Hayden Kamlah.

107 Belvin High Country 4107

MALE #2363672 JANUARY 05 2024 BA 107M PEN 2

Tehama Tahoe B767

HOOVER HIGH COUNTRY Z422

Miss Blackcap Ellston R199

Daines Danny Boy 12F

DAINES MISS BLACKCAP 13H

Daines Miss Blackcap 86F

Tehama Upward Y238

Tehama Mary Blackbird Y684

Hoover No Doubt

Miss Blackcap Ellston K317

DFCC 244B Danry Boy 67D

Daines Miss Pride 82D

Daines Blackjack 21B

Daines Miss Black Cap 11C

| BW | ADJ 205 | ADJ 365 | BW | WW | YW | MK | CED | CEM | CW | MARB | REA | FT |
|----|------------|------------|-----|----|----|----|-----|------|----|------|------|-------|
| 82 | 707 | 1313 | 0.9 | 55 | 92 | 23 | 1.0 | 12.0 | 41 | 0.57 | 0.45 | 0.016 |

108 Belvin Kokanee 4108

MALE #2385256 JANUARY 05 2024 BA 108M PEN 2

Square B Atlantis 8060

BELVIN KOKANEE 2022

Belvin Georgina 14'14

Belvin Velasquez 203'11

BELVIN LADY BLOSSOM 21'14

Belvin Lady Blossom 54'12

S A V Rainfall 6846

Elbanna of Conanga 1209

Belvin Tres Marias Patron 205

Belvin Georgina 33'12

S A V Bismarck 5682

Belvin Lady Blossom 31'96

Belvin Tres Marias Patron 205

Belvin Lady Blossom 45'10



BA 108M

| BW | ADJ 205 | ADJ 365 | BW | WW | YW | MK | CED | CEM | CW | MARB | REA | FT |
|----|------------|------------|-----|----|-----|----|-----|-----|----|------|------|-------|
| 95 | 633 | 1256 | 3.7 | 60 | 106 | 23 | 1.0 | 6.0 | 37 | 0.20 | 0.44 | 0.035 |

EMBRYO TRANSFER



BA 113M

| BW | ADJ 205 | ADJ 365 | BW | WW | YW | MK | CED | CEM | CW | MARB | REA | FT |
|----|------------|------------|-----|----|-----|----|-----|-----|----|------|------|--------|
| 80 | 715 | 1368 | 3.5 | 59 | 109 | 31 | 4.0 | 3.0 | 42 | 0.18 | 0.83 | -0.012 |

113

Belvin Memphis 4113

MALE #2384490 JANUARY 06 2024 BA 113M PEN 1

Square B Atlantis 8060

BELVIN KOKANEE 2022

Belvin Georgina 14'14

Belvin Velasquez 203'11

BELVIN LADY BLOSSOM 21'14

Belvin Lady Blossom 54'12

S A V Rainfall 6846

Elbanna of Conanga 1209

Belvin Tres Marias Patron 205

Belvin Georgina 33'12

S A V Bismarck 5682

Belvin Lady Blossom 31'96

Belvin Tres Marias Patron 205

Belvin Lady Blossom 45'10

Memphis 4113 is one of four flush brothers out of Kokanee and Lady Blossom 21'14, one of our top Velasquez daughters. These four brothers are all big hipped, stout made bulls with excellent bone and hair. Their donor dam has had feature sons sell to East & West Ranching Co. Ltd., Flying E Rancho, Clifton Ranch and Wheatland Farming Co. 4113 is a powerhouse bull with an awesome look and a great dam. **EMBRYO TRANSFER**

115

Belvin Revival 4115

MALE #2363676 JANUARY 06 2024 BA 115M PEN 3

Woodhill Relevance

WOODHILL REVIVAL H028

Woodhill Evergreen A43-F039

LT Warden 8316

BELVIN QUEEN GEM 273'21

Belvin Queen GEM 8'15

Connealy Confidence Plus

Woodhill Blackbird X197-Z7

Basin Payweight 1682

Woodhill Evergreen Y10-A43

Koupals B&B Titan 3013

LT Lucy 4078 TW

Belvin Tres Marias Patron 205

Braeside Queen Gem 41'13

Revival 4115 adds to the long list of feature Revival sons through two sales. 4115 is a high growth, curve bending bull, who combines modest BW with length, style and an attractive look. This big YW bull posted a 107 Index and has the EPD profile to match with Weaning and Yearling figures at the front end of the offering. Being in the Top 1% of the breed for RADG, 4115 is breeding true to the Revival sire group as they convert feed to match these predictions. His hard working, young Warden dam is moderate framed, highly fertile, and has a tight and level udder.



BA 115M

| BW | ADJ 205 | ADJ 365 | BW | WW | YW | MK | CED | CEM | CW | MARB | REA | FT |
|----|------------|------------|-----|----|-----|----|-----|-----|----|------|------|-------|
| 88 | 688 | 1315 | 2.9 | 80 | 143 | 17 | 3.0 | 4.0 | 67 | 0.53 | 0.24 | 0.117 |



BA 116M

116

Belvin Milestone 4116

MALE #2363677 JANUARY 06 2024 BA 116M PEN 1

Hoover No Doubt

HART LIMIT UP 0506

Hart Whitney 3206

EXAR Pillar 9723B

BELVIN GEORGINA 189'21

Belvin Georgina 224'17

Mogck Bullseye

Miss Blackcap Ellston J2

Connealy Cavalry 1149

Hart Whitney 0244

EXAR Monumental 6056B

WILKS Blackcap 4N29

Wiwa Creek Monarch 248'12

Belvin Georgina 18'10

Milestone 4116 is a top Limit Up son and a true sale feature. Much like his sire he is very complete with added dimension and a dense muscle pattern, coupled with a very attractive and eye catching phenotype. 4116 has been noted from a young age with early maturity and performance. 4116 will increase end product merit, maternal traits and docility. His dam is a strong second calver by EXAR Pillar, who stems from a very prominent cow family. A maternal brother is at Clifton Ranch.

| BW | ADJ 205 | ADJ 365 | BW | WW | YW | MK | CED | CEM | CW | MARB | REA | FT |
|----|------------|------------|-----|----|-----|----|-----|------|----|------|------|--------|
| 76 | 726 | 1388 | 0.1 | 67 | 111 | 27 | 8.0 | 11.0 | 55 | 0.91 | 0.89 | -0.008 |

117

Belvin Caldwell 4117

MALE #2363678 JANUARY 06 2024 BA 117M PEN 3

Sitz Resilient 10208

SHAW CALDWELL 11432

Tehama Mary Blackbird Dog4

Baldrige Mercenary Doo2

BELVIN LADY BLOSSOM 32'22

Belvin Lady Blossom 57'20

Sitz Stellar 726D

Sitz Miss Burgess 1856

Tehama Upward Y238

Tehama Mary Blackbird Y684

EF Commando 1366

Baldrige Rachel A029

Poss Maverick

Belvin Lady Blossom 98'18



BA 117M

| BW | ADJ 205 | ADJ 365 | BW | WW | YW | MK | CED | CEM | CW | MARB | REA | FT |
|----|------------|------------|-----|----|-----|----|-----|-----|----|------|------|-------|
| 80 | 719 | 1337 | 0.8 | 73 | 127 | 36 | 4.0 | 7.0 | 56 | 1.06 | 0.61 | 0.050 |



BA 119M

119 Belvin Madrid 4119

MALE #2364222 JANUARY 06 2024 BA 119M PEN 2

Square B Atlantis 8060

BELVIN KOKANEE 2022

Belvin Georgina 14'14

Baldrige Discovery D121

BELVIN LADY BLOSSOM 164'21

Belvin Lady Blossom 112'14

SA V Rainfall 6846

Elbanna of Conanga 1209

Belvin Tres Marias Patron 205

Belvin Georgina 33'12

Fortunes Conquest 224

Baldrige Lady X200

Ring Creek El Tigre 9X

Belvin Lady Blossom 29'08

| BW | ADJ 205 | ADJ 365 | BW | WW | YW | MK | CED | CEM | CW | MARB | REA | FT |
|----|---------|---------|-----|----|-----|----|------|------|----|------|------|-------|
| 95 | 777 | 1466 | 4.8 | 71 | 125 | 26 | -7.0 | -4.0 | 52 | 0.65 | 0.34 | 0.014 |

Madrid 4119 is one of the impressive performance bulls in the sale, with a big hip and soft middle to go with added frame and bone. 4119 is another member of the powerful Kokanee sire group, who has an impressive ADJ yearling weight of 1466, to ratio 114. The dam of 4119 is a long bodied Discovery daughter, whose mother has served as a donor in our program.

122 Belvin Trademark 4122

MALE #2364224 JANUARY 06 2024 BA 122M PEN 4

Sitz Logo 12964

HEIKEN TRADEMARK 1018

JCH HKN Lucy 9397

Poss Maverick

BELVIN LADY BLOSSOM 183'22

Belvin Lady Blossom 14'09

Sitz Tebow 11860

Sitz Shauna 3152

JCH Chisum 7019

JCH Hazel 6155

Basin Payweight 1682

Poss Pride 5163

Belvin Rebel 33'05

Belvin Lady Blossom 22'02

| BW | ADJ 205 | ADJ 365 | BW | WW | YW | MK | CED | CEM | CW | MARB | REA | FT |
|----|---------|---------|------|----|-----|----|-----|------|----|------|------|-------|
| 70 | 735 | 1278 | -0.7 | 70 | 120 | 26 | 9.0 | 13.0 | 51 | 0.45 | 0.58 | 0.026 |





125 **Belvin Monterrey 4125**
 MALE #2372662 JANUARY 06 2024 BA 125M PEN 1

Square B Atlantis 8060
BELVIN KOKANEE 2022
 Belvin Georgina 14'14

Belvin Velasquez 203'11
BELVIN LADY BLOSSOM 21'14
 Belvin Lady Blossom 54'12

SA V Rainfall 6846
 Elbanna of Conanga 1209
 Belvin Tres Marias Patron 205
 Belvin Georgina 33'12
 SA V Bismarck 5682
 Belvin Lady Blossom 31'96
 Belvin Tres Marias Patron 205
 Belvin Lady Blossom 45'10

A standout since birth and a favorite of many visitors, Monterrey 4125 is another brother from the Kokanee x Lady Blossom 21'14 flush. 4125 is probably the biggest hipped bull in the sale who has great hair, impressive bone and a commanding presence to him. The Kokanee sired calves, in both sexes, are the most impressive group we have this year for hair, bone and power. With performance numbers at the top of the breed, 4125 is packed full of muscle, which shows in his Top 10% REA EPD. **EMBRYO TRANSFER**

| BW | ADJ 205 | ADJ 365 | BW | WW | YW | MK | CED | CEM | CW | MARB | REA | FT |
|----|------------|------------|-----|----|-----|----|------|-----|----|------|------|--------|
| 88 | 690 | 1366 | 5.7 | 76 | 130 | 29 | -9.0 | 0.0 | 62 | 0.10 | 0.91 | -0.020 |

Kokanee 2022 **SIRE**



Kilowatt 2201 **MATERNAL BROTHER**



Velasquez 203'11 **MATERNAL GRANDSIRE**





127 Belvin Trademark 4127

MALE #2364228 JANUARY 07 2024 BA 127M PEN 2

Sitz Logo 12964
HEIKEN TRADEMARK 1018
 JCH HKN Lucy 9397
 Sitz Major 707F
BELVIN QUEEN 144'22
 Belvin Queen 144'10

Sitz Tebow 11860
 Sitz Shauna 3152
 JCH Chisum 7019
 JCH Hazel 6155
 Sitz Stellar 726D
 Sitz Lady 383D
 Sunny Dynasty 13R
 Belvin Queen 17'04

| BW | ADJ 205 | ADJ 365 | BW | WW | YW | MK | CED | CEM | CW | MARB | REA | FT |
|----|---------|---------|------|----|-----|----|-----|-----|----|------|------|-------|
| 76 | 760 | 1309 | -0.3 | 77 | 125 | 23 | 6.0 | 7.0 | 60 | 0.37 | 0.49 | 0.007 |

130 Belvin Miner 4130

MALE #2364434 JANUARY 07 2024 BA 130M PEN 2

SS Enforcer E812
RIVERBEND LAWMAN J053
 Spruce Mtn Rita 8102
 HF Junction 18B
BELVIN EMBLYNETTE 89'18
 Belvin Emblynette 201'12

Sydgen Enhance
 SS Miss Daybreak K011 3K17
 Baldridge Colonel C251
 Black Gold Rita 527
 Young Dale Yohann 39Y
 HF Elsiemere 106W
 HF Kodiak 5R
 SA V Emblynette 5486

| BW | ADJ 205 | ADJ 365 | BW | WW | YW | MK | CED | CEM | CW | MARB | REA | FT |
|-----|---------|---------|-----|----|-----|----|------|------|----|------|------|--------|
| 101 | 703 | 1420 | 3.4 | 70 | 130 | 34 | -4.0 | -6.0 | 39 | 0.69 | 0.89 | -0.018 |

132 Belvin Milwaukee 4132

MALE #2364439 JANUARY 07 2024 BA 132M PEN 3

Sitz Resilient 10208
SHAW CALDWELL 11432
 Tehama Mary Blackbird D094
 Baldridge Vegas G082
BELVIN QUEEN 3'22
 Belvin Queen 37'19

Sitz Stellar 726D
 Sitz Miss Burgess 1856
 Tehama Upward Y238
 Tehama Mary Blackbird Y684
 Spring Cove Reno 4021
 Baldridge Isabel Y69
 Baldridge Mercenary D002
 Belvin Queen 177'16

Milwaukee 4132 stood as an early favorite alongside his first calving dam this summer. His young Vegas mother is ideal in every way and a maternal sister to the strong lot 32 bull in this offering. She is one of the outstanding young cows that we have produced. 4132 does it all as a heifers first calf with a balanced data set for performance and maternal traits earning him the top CBI (Combined) index in the offering. Fertility, milk, performance, negative BW, docility, and structural correctness, 4132 does it all.



| BW | ADJ 205 | ADJ 365 | BW | WW | YW | MK | CED | CEM | CW | MARB | REA | FT |
|----|---------|---------|------|----|-----|----|-----|-----|----|------|------|-------|
| 80 | 743 | 1396 | -0.1 | 66 | 110 | 32 | 6.0 | 3.0 | 37 | 0.59 | 0.75 | 0.044 |

135 Belvin Mustang 4135

MALE #2364443 JANUARY 08 2024 BA 135M PEN 3

Sitz Resilient 10208

SHAW CALDWELL 11432

Tehama Mary Blackbird Dog4

Poss Maverick

BELVIN ANDRIA 25'21

Belvin Tres Marias Andria 7313

Sitz Stellar 726D

Sitz Miss Burgess 1856

Tehama Upward Y238

Tehama Mary Blackbird Y684

Basin Payweight 1682

Poss Pride 5163

Tres Marias 6301 Zorzal

Tres Marias 7358 LA Andria T/E

| BW | ADJ 205 | ADJ 365 | BW | WW | YW | MK | CED | CEM | CW | MARB | REA | FT |
|----|------------|------------|-----|----|-----|----|-----|-----|----|------|------|-------|
| 78 | 683 | 1304 | 0.0 | 77 | 132 | 34 | 5.0 | 2.0 | 48 | 0.91 | 0.52 | 0.071 |



BA 135M

137 Belvin Macallan 4137

MALE #2372652 JANUARY 08 2024 BA 137M PEN 2

Basin Deposit 6249

BASIN JAMESON 1076

Basin Joy 9140

Belvin Panic Switch 2'11

BELVIN GEORGINA 45'15

Belvin Georgina 60'00

Basin Advance 3134

Basin Lucy 4288

EXAR Monumental 6056B

Basin Joy 5367

S A V Pioneer 7301

Belvin Lady Blossom 14'09

G D A R Rolls Royce 203

Belvin Georgina 52'95

| BW | ADJ 205 | ADJ 365 | BW | WW | YW | MK | CED | CEM | CW | MARB | REA | FT |
|----|------------|------------|-----|----|-----|----|------|-----|----|------|------|-------|
| 98 | 807 | 1595 | 6.6 | 99 | 161 | 22 | -9.0 | 6.0 | 80 | 0.77 | 0.50 | 0.042 |

Macallan 4137 is the big iron performance prospect in the offering with outstanding weaning and yearling figures. 4137 posted the top YW in the offering at an impressive 1595 lbs. 4137 is a long bodied, big outlined bull who is packed full of red meat, he will sire a set of feeder cattle second to none. This big growth and big conversion Jameson son ranks among the elite in the breed for WW and YW, with both being in the top 1% of the CAA data base. His dam serves as a donor in our program and has sons at Cluny Colony (2), O+ Ranching, 2L Ranch, and Whey Lake Farms. **EMBRYO TRANSFER**



BA 137M

Belvin Georgina 45'15
DAM



139

Belvin Caldwell 4139

MALE #2364446 JANUARY 08 2024 BA 139M PEN 3

*Sitz Resilient 10208***SHAW CALDWELL 11432***Tehama Mary Blackbird Dog4**Square B Atlantis 8060***BELVIN LADY BLOSSOM 82'22***Belvin Lady Blossom 95'16**Sitz Stellar 726D**Sitz Miss Burgess 1856**Tehama Upward Y238**Tehama Mary Blackbird Y684**SA V Rainfall 6846**Elbanna of Conanga 1209**KR Cash 4003**Belvin Lady Blossom 48'13*

| BW | ADJ 205 | ADJ 365 | BW | WW | YW | MK | CED | CEM | CW | MARB | REA | FT |
|----|------------|------------|------|----|-----|----|-----|------|----|------|------|-------|
| 72 | 692 | 1333 | -0.5 | 58 | 108 | 33 | 9.0 | 14.0 | 27 | 0.32 | 0.41 | 0.058 |



BA 139M

141

Belvin Mangana 4141

MALE #2384492 JANUARY 09 2024 BA 141M PEN 2

*Woodhill Relevance***WOODHILL REVIVAL H028***Woodhill Evergreen A43-F039**O C C Legacy 839L***KFC 839L MISS LEGACY 019***KFC 4532 Miss Rainmaker**Connealy Confidence Plus**Woodhill Blackbird X197-Z7**Basin Payweight 1682**Woodhill Evergreen Y10-A43**O C C Echelon 857E**O C C Dixie Erica 960E**Crowfoot 4532P**Barnett Miss Wiseguy 29P*

| BW | ADJ 205 | ADJ 365 | BW | WW | YW | MK | CED | CEM | CW | MARB | REA | FT |
|----|------------|------------|-----|----|-----|----|-----|-----|----|-------|------|-------|
| 78 | 688 | 1329 | 0.6 | 52 | 100 | 17 | 9.0 | 6.0 | 35 | -0.07 | 0.16 | 0.057 |

Mangana 4141 is one of the top Revival sons in the offering. This ET bull is long bodied, and sound structured. His dam was a top Donor female in our program who had a perfect udder and ideal body type, typical of her Legacy x Rainmaker lineage. With 41 progeny registered to date, she has sons working at top outfits across Western Canada including Klaudt Ranches, Clifton Ranch (2), East & West Ranching Co. Ltd (2), Clegg Angus, Ellis Cattle Co, Hargrave Ranching, Illniki Ranch, Cluny Colony, Arrowwood Colony, Cantriex Livestock, Jade Farms, Whey Lake Farms, Willow Valley Ranch, Elkink Ranch, and Jackson Farms. **EMBRYO TRANSFER**



BA 141M

Miss Legacy 019
DAM





BA 142M

| BW | ADJ 205 | ADJ 365 | BW | WW | YW | MK | CED | CEM | CW | MARB | REA | FT |
|----|------------|------------|-----|----|-----|----|-----|-----|----|------|------|-------|
| 90 | 782 | 1421 | 1.2 | 74 | 127 | 43 | 2.0 | 5.0 | 52 | 0.68 | 0.88 | 0.011 |

142

Belvin Military 4142

MALE #2364549 JANUARY 09 2024 BA 142M PEN 2

Sitz Resilient 10208

SHAW CALDWELL 11432

Tehama Mary Blackbird D094

Poss Maverick

BELVIN LADY BLOSSOM 157'20

Belvin Lady Blossom 47'12

Sitz Stellar 726D

Sitz Miss Burgess 1856

Tehama Upward Y238

Tehama Mary Blackbird Y684

Basin Payweight 1682

Poss Pride 5163

Belvin Wanderlei 25'09

Belvin Lady Blossom 47'97

Military 4142 is a high indexing and big performance Caldwell son who has been an early favorite. 4142 sports a Ribeye EPD in the top 10% of the breed and will add highly marbled, big muscle to his offspring. This high growth herd sire prospect offers a very balanced and elite set of predictions including leading WW, YW and Milk. His dam is a power female who traces back to herd matriarch and cornerstone female 47'97, who was among the elite of her era, her influence is still prominent within our cow herd today.

146

Belvin Montgomery 4146

MALE #2364551 JANUARY 09 2024 BA 146M PEN 1

Vermilion Reride F116

BELVIN MAY CITY 0136

Belvin Georgina 121'17

Duralta 56S Yellowstone 136X

BELVIN ERICA 122'15

Belvin Erica 54'10

Vermilion Re-Ride

Vermilion Lucy 5087

HF Syndicate 65B

Belvin Georgina 45'15

Minburn Yellowstone 56S

Duralta 32R Alliane 189U

HF Tiger 5T

Belvin Erica 2'06

The May City sire group will be one of the most consistent sets of bulls we have offered; they have an attractive look, natural muscle, breed character and great feet. Montgomery 4146 is a compact made bull with added muscle shape and a great look to him. His mother is one of our best Yellowstone daughters and has a picture perfect udder, she has sons working at Barrington Ranch Ltd, Cluny Colony, and Mt Sentinel Ranch.



BA 146M

| BW | ADJ 205 | ADJ 365 | BW | WW | YW | MK | CED | CEM | CW | MARB | REA | FT |
|----|------------|------------|-----|----|----|----|-----|-----|----|------|------|-------|
| 84 | 728 | 1275 | 1.9 | 49 | 74 | 23 | 4.0 | 5.0 | 31 | 0.27 | 0.55 | 0.014 |



IVY 149M

149 Belvin Menace 4149

MALE #2364553 JANUARY 10 2024 IVY 149M PEN 3

Woodhill Relevance

WOODHILL REVIVAL H028

Woodhill Evergreen A43-F039

Sitz Major 707F

BELVIN LADY BLOSSOM 51'22

Belvin Lady Blossom 77'20

Connealy Confidence Plus

Woodhill Blackbird X197-Z7

Basin Payweight 1682

Woodhill Evergreen Y10-A43

Sitz Stellar 726D

Sitz Lady 383D

Vermilion Reride F116

Belvin Lady Blossom 202'17

Menace 4149 marks Ivy's first foray into bull selling, and he is a very eye appealing and balanced bull with great depth of body and structural correctness. With a big top, length, and fault free design 4149 is an exciting herd sire prospect. Revival stamps his progeny with calving ease, performance and style making both males and females very sought after. 4149 offers one of the most impressive data sets in the offering with leading performance, conversion, and fertility predictions all near the top of the breed. 4149's mother is a very promising first calf heifer who is beautiful uddered and feminine in her make up.

| BW | ADJ 205 | ADJ 365 | BW | WW | YW | MK | CED | CEM | CW | MARB | REA | FT |
|----|------------|------------|-----|----|-----|----|-----|-----|----|------|------|-------|
| 77 | 768 | 1377 | 1.5 | 82 | 145 | 22 | 7.0 | 8.0 | 69 | 0.47 | 0.68 | 0.057 |



Lady Blossom 77'20 MATERNAL GRANDDAM



Major 707F MATERNAL GRANDSIRE



152

Belvin Revival 4152

MALE #2372659 JANUARY 10 2024 BA 152M PEN 4

*Woodhill Relevance***WOODHILL REVIVAL H028***Woodhill Evergreen A43-F039**O C C Legacy 839L***KFC 839L MISS LEGACY 019***KFC 4532 Miss Rainmaker**Connealy Confidence Plus**Woodhill Blackbird X197-Z7**Basin Payweight 1682**Woodhill Evergreen Y10-A43**O C C Echelon 857E**O C C Dixie Erica 960E**Crowfoot 4532P**Barnett Miss Wiseguy 29P*

| BW | ADJ 205 | ADJ 365 | BW | WW | YW | MK | CED | CEM | CW | MARB | REA | FT |
|----|------------|------------|-----|----|----|----|-----|-----|----|------|------|-------|
| 80 | 655 | 1284 | 2.0 | 53 | 94 | 20 | 6.0 | 8.0 | 32 | 0.41 | 0.38 | 0.041 |

EMBRYO TRANSFER



BA 152M

153

Belvin Marine 4153

MALE #2364555 JANUARY 10 2024 BA 153M PEN 1

*Sitz Resilient 10208***SHAW CALDWELL 11432***Tehama Mary Blackbird D094**Connealy Dateline***ELLIOT 3E LADY HEATHER 4141***Poplar Mdws Lady Heather 3W**Sitz Stellar 726D**Sitz Miss Burgess 1856**Tehama Upward Y238**Tehama Mary Blackbird Y684**D H D Traveler 6807**Eila Eila of Conanga**S A V Final Answer 0035**Poplar Mdws Lady Heather 28S*

| BW | ADJ 205 | ADJ 365 | BW | WW | YW | MK | CED | CEM | CW | MARB | REA | FT |
|----|------------|------------|-----|----|-----|----|-----|------|----|------|------|-------|
| 95 | 714 | 1456 | 1.4 | 67 | 124 | 39 | 2.0 | -3.0 | 49 | 0.12 | 0.78 | 0.063 |

Marine 4153 will be one of the most intriguing bulls to sell all spring, combining performance, dense muscle, soundness, and structural integrity. This imposing bull is the epitome of what makes Caldwell unique, providing low birth weight, strong growth, end product merit, large scrotal, foot quality, fertility, and milk all in a below average frame size. 4153 has been noted from the start and has continued to push forward indexing at the top of his contemporary at 118 for YW. This soft-made, bold muscled bull is attractive and eye catching with herd sire qualities. High production females stand behind 4153 as he weaned off his 10-year-old dam who was a past High Selling Female of the renowned Angus Collection sale. She has sons at Arrowwood Colony, Jahnke Ranches, Lawrence Ranch, and 2L Ranch.



BA 153M



BA 154M

| BW | ADJ 205 | ADJ 365 | BW | WW | YW | MK | CED | CEM | CW | MARB | REA | FT |
|-----|------------|------------|-----|----|----|----|-----|-----|----|------|------|-------|
| 107 | 738 | 1409 | 2.2 | 51 | 88 | 25 | 3.0 | 5.0 | 30 | 0.56 | 0.67 | 0.002 |

154

Belvin Marlin 4154

MALE #2364556 JANUARY 10 2024 BA 154M PEN 1

S S Enforcer E812

RIVERBEND LAWMAN J053

Spruce Mtn Rita 8102

Belvin Velasquez 203'11

BELVIN DUCHESS 122'16

Belvin Duchess 168'10

Sydgen Enhance

S S Miss Daybreak K011 3K17

Baldrige Colonel C251

Black Gold Rita 527

S A V Bismarck 5682

Belvin Lady Blossom 31'96

Belvin Panther 21'04

Belvin Duchess 30'01

Marlin 4154 is the powerhouse of the Lawman sire group with as much muscle and maturity as you can pack into one. 4154 has had a husky look from a young age at the side of his Velasquez sired dam, with his added growth and masculine look. His mother is a top-working cow who is very functional with a lot of volume and a great udder. This high-powered cow bull will add red meat and substance to his calves in an acceptable frame score. 4154 has maternal brothers at Hummock Springs Ranching and Clemitson Ranch.

157

Belvin Manchester 4157

MALE #2364562 JANUARY 11 2024 BA 157M PEN 3

Sitz Resilient 10208

SHAW CALDWELL 11432

Tehama Mary Blackbird D094

Baldrige Mercenary D002

BELVIN LADY DI 19'20

Belvin Lady DI 84'17

Sitz Stellar 726D

Sitz Miss Burgess 1856

Tehama Upward Y238

Tehama Mary Blackbird Y684

EF Commando 1366

Baldrige Rachel A029

Wiwa Creek Monarch 248'12

Belvin Lady DI 124'10

Manchester 4157 is the calving ease specialist of the offering with CED of +20 and BW of -4, he is the only animal born in 2024 within the CAA database that meets those selection criteria. 4157 is a moderate statured, wide topped, thick made bull who will leave an excellent set of replacements with added milk, carcass merit and reduced mature size. 4157's dam is a typical Mercenary daughter being a very efficient, low maintenance female with a beautiful udder. A maternal brother is working at Barrington Ranch Ltd.



BA 157M

| BW | ADJ 205 | ADJ 365 | BW | WW | YW | MK | CED | CEM | CW | MARB | REA | FT |
|----|------------|------------|------|----|----|----|------|------|----|------|------|-------|
| 70 | 643 | 1193 | -4.0 | 52 | 97 | 42 | 20.0 | 13.0 | 29 | 0.86 | 0.47 | 0.060 |

158

Belvin Caldwell 4158

MALE #2364563 JANUARY 11 2024 BA 158M PEN 4

*Sitz Resilient 10208***SHAW CALDWELL 11432***Tehama Mary Blackbird Dog4**Baldrige Vegas Go82***BELVIN LADY BLOSSOM 149'21***Belvin Lady Blossom 46'18**Sitz Stellar 726D**Sitz Miss Burgess 1856**Tehama Upward Y238**Tehama Mary Blackbird Y684**Spring Cove Reno 4021**Baldrige Isabel Y69**JNJ Pokerface 10C**Belvin Lady Blossom 112'14*

| BW | ADJ 205 | ADJ 365 | BW | WW | YW | MK | CED | CEM | CW | MARB | REA | FT |
|----|------------|------------|------|----|-----|----|-----|-----|----|------|------|-------|
| 71 | 645 | 1278 | -1.7 | 58 | 106 | 32 | 9.0 | 6.0 | 37 | 0.83 | 0.54 | 0.052 |

162

Belvin Trademark 4162

MALE #2364571 JANUARY 11 2024 BA 162M PEN 4

*Sitz Logo 12964***HEIKEN TRADEMARK 1018***JCH HKN Lucy 9397**Sitz Major 707F***BELVIN BARBARA 92'22***Belvin Barbara 47'20**Sitz Tebow 11860**Sitz Shauna 3152**JCH Chisum 7019**JCH Hazel 6155**Sitz Stellar 726D**Sitz Lady 383D**Poss Maverick**Belvin Barbara 38'15*

| BW | ADJ 205 | ADJ 365 | BW | WW | YW | MK | CED | CEM | CW | MARB | REA | FT |
|----|------------|------------|------|----|-----|----|-----|------|----|------|------|-------|
| 79 | 717 | 1338 | -0.6 | 73 | 119 | 28 | 7.0 | 13.0 | 46 | 0.85 | 0.27 | 0.056 |

163

Belvin Caldwell 4163

MALE #2364572 JANUARY 11 2024 BA 163M PEN 2

*Sitz Resilient 10208***SHAW CALDWELL 11432***Tehama Mary Blackbird Dog4**HF El Tigre 28U***BELVIN LADY BLOSSOM 42'15***Belvin Lady Blossom 29'o8**Sitz Stellar 726D**Sitz Miss Burgess 1856**Tehama Upward Y238**Tehama Mary Blackbird Y684**HF Kodiak 5R**HF Echo 84R**Belvin Rebel 33'o5**Belvin Lady Blossom 42'o5*

| BW | ADJ 205 | ADJ 365 | BW | WW | YW | MK | CED | CEM | CW | MARB | REA | FT |
|----|------------|------------|------|----|----|----|-----|-----|----|------|------|-------|
| 82 | 667 | 1272 | -0.5 | 51 | 92 | 35 | 9.0 | 7.0 | 36 | 0.54 | 0.46 | 0.012 |

**BULL SALE Terms & Conditions**

OWNERSHIP Belvin Angus will retain 1/3 semen interest in all bulls selling. Buyer has full possession and full salvage value of the bull.

CATTLE INSPECTION All bulls carry permanent identity tags that correspond with the Sale Lot numbers. The bulls also carry a freeze brand, correlating their birth year and their tag number. All bulls have the required CCIA buttons. Cattle available for viewing prior to the sale.

BREEDING GUARANTEE All bulls sell with the responsible Breeders Guarantee of Satisfaction. All bulls are guaranteed. All cattle sell under the Terms and Conditions set forth by the Canadian Angus Association.

SIGHT UNSEEN PURCHASE GUARANTEE If you are unable to attend the sale, we have a sight unseen purchase plan that is 100% satisfaction guaranteed. Contact any of us for further details.

INSURANCE Ownership risk to purchaser commences when the Auctioneer's hammer falls. Livestock insurance will be available sale day.

TERMS OF SALE Cash or cheque at par, payable to Clerks on Sale Day. No release of cattle will occur until satisfactory settlement has been made.

LIABILITY All Persons who attend this sale do so at their own risk, and the owners and sale staff assume no liability, legal or otherwise for property loss or for any accidents that may occur.

ANNOUNCEMENTS Errors discovered in the catalogue will be corrected from the auction block at the beginning of the sale and such corrections will take precedence over the printed material in the catalogue.



GENOMICALLY ENHANCED EPDS All bulls are parent verified and have genetically enhanced EPDs.

CARCASS DATA

ULTRASOUND The bulls have all been ultrasounded. Ultrasound results will be available sale day.



164 **Belvin Magnum 4164**
 MALE #2384493 JANUARY 11 2024 BA 164M PEN 1

Basin Deposit 6249
BASIN JAMESON 1076
Basin Joy 9140

S A V Pioneer 7301
BELVIN LADY BLOSSOM 23'12
Belvin Lady Blossom 62'06

Basin Advance 3134
Basin Lucy 4288
EXAR Monumental 6056B
Basin Joy 5367
S A V Final Answer 0035
S A V Blackbird 5297
Peak Dot Stockman 254N
Belvin Lady Blossom 71'03

Magnum 4164 is a herd sire prospect by Jameson that has been admired at every age. His length, muscle shape, and overall presence make for a very impressive package. 4164 is very correct and travels with ease on great feet and legs. This high caliber bull combines strong growth figures and breed leading carcass traits for both Marbling and Ribeye area. 4164's dam is a feature donor female in our program who has had 6 sons sell as past sale highlights selected by East & West Ranching Co. Ltd.(2), Flying E Rancho, Jahnke Ranches, Mullin Ranch, and South Porcupine Ranch Ltd. **EMBRYO TRANSFER**

| BW | ADJ 205 | ADJ 365 | BW | WW | YW | MK | CED | CEM | CW | MARB | REA | FT |
|-----|------------|------------|-----|----|-----|----|-----|-----|----|------|------|--------|
| 102 | 781 | 1363 | 3.7 | 79 | 125 | 17 | 0.0 | 5.0 | 50 | 0.84 | 0.64 | -0.010 |

Lady Blossom 23'12 DAM



High Class 0081 MATERNAL BROTHER



Flash Point 8053 MATERNAL BROTHER





BA 165M

165

Belvin Revival 4165

MALE #2364574 JANUARY 12 2024 BA 165M PEN 2

Woodhill Relevance

WOODHILL REVIVAL H028

Woodhill Evergreen A43-F039

Baldrige Alternative E125

BELVIN LADY BLOSSOM 43'21

Belvin Lady Blossom 44'14

Connealy Confidence Plus

Woodhill Blackbird X197-Z7

Basin Payweight 1682

Woodhill Evergreen Y10-A43

Poss Easy Impact 0119

Baldrige Blackbird A030

S A V Pioneer 7301

Belvin Lady Blossom 37'01

| BW | ADJ 205 | ADJ 365 | BW | WW | YW | MK | CED | CEM | CW | MARB | REA | FT |
|----|------------|------------|-----|----|-----|----|-----|-----|----|------|------|-------|
| 84 | 702 | 1323 | 1.7 | 62 | 116 | 23 | 5.0 | 9.0 | 44 | 0.79 | 0.49 | 0.012 |



BA 167M

167

Belvin Malbec 4167

MALE #2372660 JANUARY 12 2024 BA 167M PEN 2

Square B Atlantis 8060

BELVIN KOKANEE 2022

Belvin Georgina 14'14

Belvin Velasquez 203'11

BELVIN LADY BLOSSOM 21'14

Belvin Lady Blossom 54'12

S A V Rainfall 6846

Elbanna of Conanga 1209

Belvin Tres Marias Patron 205

Belvin Georgina 33'12

S A V Bismarck 5682

Belvin Lady Blossom 31'96

Belvin Tres Marias Patron 205

Belvin Lady Blossom 45'10

| BW | ADJ 205 | ADJ 365 | BW | WW | YW | MK | CED | CEM | CW | MARB | REA | FT |
|----|------------|------------|-----|----|-----|----|------|-----|----|------|------|-------|
| 96 | 716 | 1339 | 3.8 | 58 | 112 | 28 | -4.0 | 2.0 | 51 | 0.21 | 0.58 | 0.027 |

EMBRYO TRANSFER

168

Belvin Revival 4168

MALE #2364578 JANUARY 12 2024 BA 168M PEN 4

Woodhill Relevance

WOODHILL REVIVAL H028

Woodhill Evergreen A43-F039

Baldrige Alternative E125

BELVIN LADY HEATHER 91'21

Elliot 3E Lady Heather 4141

Connealy Confidence Plus

Woodhill Blackbird X197-Z7

Basin Payweight 1682

Woodhill Evergreen Y10-A43

Poss Easy Impact 0119

Baldrige Blackbird A030

Connealy Dateline

Poplar Mdws Lady Heather 3W

| BW | ADJ 205 | ADJ 365 | BW | WW | YW | MK | CED | CEM | CW | MARB | REA | FT |
|----|------------|------------|-----|----|----|----|-----|-----|----|------|------|-------|
| 84 | 631 | 1174 | 0.0 | 54 | 95 | 20 | 7.0 | 7.0 | 33 | 0.59 | 0.41 | 0.058 |

CONGRATULATIONS

Callum Miller

Callum Miller on 'Hard Not to Get' to score 86
and win round 9 at the 2024 Calgary Stampede





BA 174M

174

Belvin Marlboro 4174

MALE #2364995 JANUARY 13 2024 TWIN BA 174M PEN 1

Sitz Resilient 10208

SHAW CALDWELL 11432

Tehama Mary Blackbird Dog4

Belvin Tres Marias Patron 205

BELVIN GEORGINA 17'15

Belvin Georgina 90'13

Sitz Stellar 726D

Sitz Miss Burgess 1856

Tehama Upward Y238

Tehama Mary Blackbird Y684

Alston 5384 Catriel F

Tres Marias6764 Rosanegra 5214

Belvin Rebel 33'05

Belvin Georgina 26'06

Marlboro 4174 is one of the Elite Caldwell sons in the offering pairing phenotype and maternal power. 4174 has an eye-catching presence with bold muscle shape, a soft middle, sound structure, while standing on a perfect foot with an ideal leg set. The Patron females in our herd are some of the very elite females and the kind that the Angus breed has built a reputation on. 4174's dam is an ideal 10-year-old female who is moderate framed, feminine and functional, she has progeny at Glenbar Ranching, Parkview Farms, and Lawrence Ranch.

| BW | ADJ 205 | ADJ 365 | BW | WW | YW | MK | CED | CEM | CW | MARB | REA | FT |
|----|---------|---------|-----|----|-----|----|-----|-----|----|------|------|-------|
| 75 | 712 | 1329 | 1.4 | 54 | 104 | 32 | 2.0 | 6.0 | 34 | 0.56 | 0.15 | 0.055 |

176

Belvin Limit Up 4176

MALE #2365057 JANUARY 13 2024 BA 176M PEN 3

Hoover No Doubt

HART LIMIT UP 0506

Hart Whitney 3206

Poss Maverick

BELVIN LASSIE 59'20

Belvin Lassie 13'06

Mogck Bullseye

Miss Blackcap Ellston J2

Connealy Cavalry 1149

Hart Whitney 0244

Basin Payweight 1682

Poss Pride 5163

Belvin Panther 21'04

Northline Black Crystal 145P



BA 176M

| BW | ADJ 205 | ADJ 365 | BW | WW | YW | MK | CED | CEM | CW | MARB | REA | FT |
|----|---------|---------|-----|----|-----|----|------|-----|----|------|------|--------|
| 98 | 649 | 1302 | 3.1 | 63 | 109 | 33 | -6.0 | 4.0 | 49 | 1.02 | 0.90 | -0.053 |



BA 177M

| BW | ADJ 205 | ADJ 365 | BW | WW | YW | MK | CED | CEM | CW | MARB | REA | FT |
|----|------------|------------|-----|----|----|----|------|-----|----|------|------|--------|
| 88 | 730 | 1297 | 2.0 | 59 | 94 | 22 | -1.0 | 5.0 | 43 | 0.86 | 0.78 | -0.024 |

177 **Belvin Midland 4177**
MALE #2365058 JANUARY 14 2024 BA 177M PEN 3

Tehama Tahoe B767
HOOVER HIGH COUNTRY Z422
Miss Blackcap Ellston R199

Poss Maverick
BELVIN LUCY 35'21
Belvin Lucy 60'19

Tehama Upward Y238
Tehama Mary Blackbird Y684
Hoover No Doubt
Miss Blackcap Ellston K317
Basin Payweight 1682
Poss Pride 5163
HF Junction 18B
LCL Lucy 22A

Midland 4177 is a feature High Country son that is very complete and sound structured, with an attractive look. 4177 is a true beef bull that combines the great phenotype and carcass merit of his lineage; he has been noted from a young age with early maturity and performance. His dam is a hard-working young Maverick daughter who consistently calves early, maintains condition, and produces high quality offspring. A maternal brother was selected last year by ES Cattle Co.

178 **Belvin Limit Up 4178**
MALE #2365059 JANUARY 14 2024 BA 178M PEN 3

Hoover No Doubt
HART LIMIT UP 0506
Hart Whitney 3206

Baldrige Discovery D121
BELVIN ERICA 142'20
Belvin Erica 76'11

Mogck Bullseye
Miss Blackcap Ellston J2
Connealy Cavalry 1149
Hart Whitney 0244
Fortunes Conquest 224
Baldrige Lady X200
Belvin Rebel 33'05
Western JMBC Lady 33R

Limit Up 4178 fits the Limit Up mold to a tee with breed character, base width and packed full of muscle. 4178 offers a unique combination of acceptable calving ease and leading feed conversion to earn a YW ratio of 115. The Discovery females have become a staple in our program; they are easy fleshing females that are easy to handle and problem free. Note 4178 offers a strong combination of MARB and REA with figures in the top 10 and 30th percentiles of the breed.



BA 178M

| BW | ADJ 205 | ADJ 365 | BW | WW | YW | MK | CED | CEM | CW | MARB | REA | FT |
|----|------------|------------|-----|----|-----|----|-----|-----|----|------|------|--------|
| 85 | 672 | 1347 | 0.5 | 59 | 113 | 23 | 6.0 | 9.0 | 49 | 0.92 | 0.70 | -0.020 |



183

Belvin Lawman 4183

MALE #2367750 JANUARY 14 2024 BA 183M PEN 2

SS Enforcer E812

RIVERBEND LAWMAN J053

Spruce Mtn Rita 8102

HF Junction 18B

BELVIN LADY BLOSSOM 246'18

Belvin Lady Blossom 12'15

Sydgen Enhance

S S Miss Daybreak K011 3K17

Baldrige Colonel C251

Black Gold Rita 527

Young Dale Yohann 39Y

HF Elsiemere 106W

Sitz Alliance 6595

Belvin Lady Blossom 22'02

| BW | ADJ 205 | ADJ 365 | BW | WW | YW | MK | CED | CEM | CW | MARB | REA | FT |
|-----|---------|---------|-----|----|-----|----|------|-----|----|------|------|-------|
| 100 | 752 | 1361 | 4.2 | 59 | 114 | 26 | -5.0 | 2.0 | 32 | 0.58 | 0.46 | 0.007 |

185

Belvin Limit Up 4185

MALE #2365084 JANUARY 14 2024 BA 185M PEN 4

Hoover No Doubt

HART LIMIT UP 0506

Hart Whitney 3206

HF Junction 18B

BELVIN LUCY 60'19

LCL Lucy 22A

Mogck Bullseye

Miss Blackcap Ellston J2

Connealy Cavalry 1149

Hart Whitney 0244

Young Dale Yohann 39Y

HF Elsiemere 106W

Belvin Panic Switch 2'11

HF Lucy 234W

| BW | ADJ 205 | ADJ 365 | BW | WW | YW | MK | CED | CEM | CW | MARB | REA | FT |
|----|---------|---------|------|----|----|----|-----|------|----|------|------|-------|
| 76 | 655 | 1237 | -1.4 | 50 | 87 | 29 | 8.0 | 11.0 | 35 | 0.53 | 0.58 | 0.018 |

187

Belvin Revival 4187

MALE #2384494 JANUARY 15 2024 BA 187M PEN 3

Woodhill Relevance

WOODHILL REVIVAL H028

Woodhill Evergreen A43-F039

O C C Legacy 839L

KFC 839L MISS LEGACY 019

KFC 4532 Miss Rainmaker

Connealy Confidence Plus

Woodhill Blackbird X197-Z7

Basin Payweight 1682

Woodhill Evergreen Y10-A43

O C C Echelon 857E

O C C Dixie Erica 960E

Crowfoot 4532P

Barnett Miss Wiseguy 29P

| BW | ADJ 205 | ADJ 365 | BW | WW | YW | MK | CED | CEM | CW | MARB | REA | FT |
|----|---------|---------|------|----|----|----|------|------|----|------|------|-------|
| 70 | 666 | 1214 | -1.6 | 37 | 67 | 23 | 11.0 | 10.0 | 25 | 0.69 | 0.38 | 0.066 |

EMBRYO TRANSFER

188

Belvin Lawman 4188

MALE #2365086 JANUARY 15 2024 BA 188M PEN 2

SS Enforcer E812

RIVERBEND LAWMAN J053

Spruce Mtn Rita 8102

Wiwa Creek Monarch 248'12

BELVIN LADY BLOSSOM 114'15

Belvin Lady Blossom 28'13

Sydgen Enhance

S S Miss Daybreak K011 3K17

Baldrige Colonel C251

Black Gold Rita 527

Wiwa Creek Monarch 53'08

Wiwa Creek Evergreen 623'06

Belvin Tres Marias Patron 205

Belvin Lady Blossom 22'02

| BW | ADJ 205 | ADJ 365 | BW | WW | YW | MK | CED | CEM | CW | MARB | REA | FT |
|----|---------|---------|-----|----|-----|----|-----|-----|----|------|------|--------|
| 80 | 736 | 1395 | 0.6 | 58 | 103 | 30 | 8.0 | 7.0 | 30 | 0.51 | 0.72 | -0.055 |

194

Belvin Trademark 4194

MALE #2365533 JANUARY 16 2024 BA 194M PEN 4

Sitz Logo 12964

HEIKEN TRADEMARK 1018

JCH HKN Lucy 9397

Sitz Major 707F

BELVIN LADY BLOSSOM 85'22

Belvin Lady Blossom 174'19

Sitz Tebow 11860

Sitz Shauna 3152

JCH Chisum 7019

JCH Hazel 6155

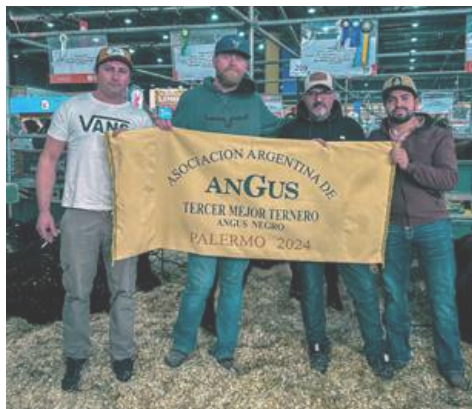
Sitz Stellar 726D

Sitz Lady 383D

Musgrave 316 Stunner

Belvin Lady Blossom 43'14

| BW | ADJ 205 | ADJ 365 | BW | WW | YW | MK | CED | CEM | CW | MARB | REA | FT |
|----|---------|---------|------|----|-----|----|------|------|----|------|------|-------|
| 63 | 725 | 1325 | -3.5 | 82 | 131 | 24 | 15.0 | 12.0 | 57 | 0.41 | 0.79 | 0.064 |



195 Coul Matrix 4195

MALE #2365534 JANUARY 16 2024 COUL 195M PEN 1

Hoover No Doubt

HART LIMIT UP 0506

Hart Whitney 3206

Musgrave 316 Stunner

COUL GEORGINA 156'20

Coul Georgina 165'12

Mogck Bullseye

Miss Blackcap Ellston J2

Connealy Cavalry 1149

Hart Whitney 0244

LD Capitalist 316

MCATL Blackbird 831-1378

Ring Creek El Tigre 9X

Belvin Georgina 18'08

| BW | ADJ 205 | ADJ 365 | BW | WW | YW | MK | CED | CEM | CW | MARB | REA | FT |
|----|------------|------------|-----|----|-----|----|-----|-----|----|------|------|-------|
| 90 | 718 | 1190 | 2.5 | 66 | 106 | 23 | 1.0 | 6.0 | 52 | 0.70 | 0.74 | 0.001 |



COUL 195M

197 Belvin Mandate 4197

MALE #2365718 JANUARY 16 2024 BA 197M PEN 1

Sitz Resilient 10208

SHAW CALDWELL 11432

Tehama Mary Blackbird Dog4

HF Syndicate 65B

BELVIN 3E GEORGINA 30'16

Belvin Georgina 14'14

Sitz Stellar 726D

Sitz Miss Burgess 1856

Tehama Upward Y238

Tehama Mary Blackbird Y684

HF Syndicate 213Z

HF Blackbird 97S

Belvin Tres Marias Patron 205

Belvin Georgina 33'12

| BW | ADJ 205 | ADJ 365 | BW | WW | YW | MK | CED | CEM | CW | MARB | REA | FT |
|----|------------|------------|------|----|----|----|-----|-----|----|------|------|-------|
| 84 | 712 | 1365 | -0.5 | 45 | 84 | 33 | 8.0 | 8.0 | 32 | 0.59 | 0.53 | 0.000 |

Mandate 4197 is another elite Caldwell son who is very athletic and sound structured, with an attractive look and a perfect foot shape. His Syndicate sired dam has all the qualities of a perfect ranch cow with great fertility, femininity, and a picture-perfect udder. This calving ease bull offers a very balanced set of figures and strong maternal merit; he will add longevity and predictability to any cowherd. Maternal brothers to 4197 are at East & West Ranching Co. Ltd (2), Bar Two Three Ranch, Flying E Rancho, Illniki Ranch, and Glenbar Ranching.



BA 197M

Georgina 14'14
GRANDDAM





BA 199M

| BW | ADJ 205 | ADJ 365 | BW | WW | YW | MK | CED | CEM | CW | MARB | REA | FT |
|----|------------|------------|-----|----|-----|----|-----|-----|----|------|------|--------|
| 88 | 798 | 1368 | 0.4 | 60 | 100 | 31 | 9.0 | 9.0 | 22 | 0.42 | 0.52 | -0.014 |

199 Belvin Manhattan 4199

MALE #2365720 JANUARY 16 2024 BA 199M PEN 2

S S Enforcer E812

RIVERBEND LAWMAN J053

Spruce Mtn Rita 8102

Belvin Velasquez 203'11

BELVIN LADY DI 89'15

Belvin Lady DI 71'12

Sydgen Enhance

S S Miss Daybreak K011 3K17

Baldrige Colonel C251

Black Gold Rita 527

S A V Bismarck 5682

Belvin Lady Blossom 31'96

Belvin Warrior 6'09

Belvin Lady DI 22'03

Manhattan 4199 is a long bodied, big topped bull, who posts curve bending figures with built in calving ease matched with performance at weaning and yearling stages. 4199 has the muscle shape and look of his grandsire Velasquez, who is among the best sires ever produced at our ranch. 4199's dam, 89'15 is designated as an Elite dam with the CAA and is the type of cow we strive to produce, with three sons at East West Ranching Co. Ltd. and one at Illniki Ranch.

201 Belvin Kokanee 4201

MALE #2365725 JANUARY 16 2024 BA 201M PEN 4

Square B Atlantis 8060

BELVIN KOKANEE 2022

Belvin Georgina 14'14

Sitz Major 707F

BELVIN LADY DI 223'21

Belvin Lady DI 224'19

S A V Rainfall 6846

Elbanna of Conanga 1209

Belvin Tres Marias Patron 205

Belvin Georgina 33'12

Sitz Stellar 726D

Sitz Lady 383D

Belvin Velasquez 203'11

Belvin Lady DI 71'12

| BW | ADJ 205 | ADJ 365 | BW | WW | YW | MK | CED | CEM | CW | MARB | REA | FT |
|----|------------|------------|-----|----|-----|----|-----|-----|----|------|------|-------|
| 76 | 698 | 1313 | 0.7 | 61 | 105 | 29 | 3.0 | 5.0 | 50 | 0.51 | 0.36 | 0.024 |



BA 201M

202 Belvin Caldwell 4202

MALE #2365728 JANUARY 16 2024 TWIN BA 202M PEN 2

Sitz Resilient 10208

SHAW CALDWELL 11432

Tehama Mary Blackbird Dog4

Duralta 56S Yellowstone 136X

BELVIN LADY BLOSSOM 154'15

Belvin Lady Blossom 67'11

Sitz Stellar 726D

Sitz Miss Burgess 1856

Tehama Upward Y238

Tehama Mary Blackbird Y684

Minburn Yellowstone 56S

Duralta 32R Alliane 189U

Coul Warlord 12'09

Belvin Lady Blossom 51'07

| BW | ADJ 205 | ADJ 365 | BW | WW | YW | MK | CED | CEM | CW | MARB | REA | FT |
|----|------------|------------|-----|----|-----|----|-----|------|----|------|------|-------|
| 80 | 666 | 1283 | 1.8 | 58 | 100 | 27 | 3.0 | 12.0 | 30 | 0.41 | 0.54 | 0.019 |



210

Belvin Limit Up 4210

MALE #2372567 JANUARY 19 2024 BA 210M PEN 2

Hoover No Doubt

HART LIMIT UP 0506

Hart Whitney 3206

Sitz Major 707F

BELVIN LADY BLOSSOM 103'20

Belvin Lady Blossom 136'18

Mogck Bullseye

Miss Blackcap Ellston J2

Connealy Cavalry 1149

Hart Whitney 0244

Sitz Stellar 726D

Sitz Lady 383D

Baldrige Discovery D121

Belvin Lady Blossom 125'15

| BW | ADJ 205 | ADJ 365 | BW | WW | YW | MK | CED | CEM | CW | MARB | REA | FT |
|----|------------|------------|------|----|-----|----|-----|------|----|------|------|--------|
| 87 | 801 | 1437 | -0.5 | 74 | 117 | 26 | 6.0 | 12.0 | 50 | 0.65 | 0.65 | -0.027 |

215

Belvin Revival 4215

MALE #2365908 JANUARY 20 2024 TWIN BA 215M PEN 3

Woodhill Relevance

WOODHILL REVIVAL H028

Woodhill Evergreen A43-F039

Baldrige Mercenary D002

BELVIN ERICA 26'19

Belvin Erica 56'17

Connealy Confidence Plus

Woodhill Blackbird X197-Z7

Basin Payweight 1682

Woodhill Evergreen Y10-A43

EF Commando 1366

Baldrige Rachel A029

HF Syndicate 65B

Belvin Erica 111'15

| BW | ADJ 205 | ADJ 365 | BW | WW | YW | MK | CED | CEM | CW | MARB | REA | FT |
|----|------------|------------|------|----|-----|----|------|------|----|------|------|-------|
| 65 | 657 | 1245 | -1.4 | 65 | 117 | 31 | 13.0 | 15.0 | 57 | 0.93 | 0.53 | 0.011 |

221

Belvin Mastermind 4221

MALE #2365913 JANUARY 21 2024 BA 221M PEN 1

S S Enforcer E812

RIVERBEND LAWMAN J053

Spruce Mtn Rita 8102

HF Junction 18B

BELVIN LADY BLOSSOM 150'18

Belvin Lady Blossom 159'15

Sydgen Enhance

S S Miss Daybreak K011 3K17

Baldrige Colonel C251

Black Gold Rita 527

Young Dale Yohann 39Y

HF Elsiemere 106W

LLB Free Wheeler 268S

Belvin Lady Blossom 37'01

Mastermind 4221 is a stout, dense made Lawman son who compliments this impressive sire group well. Lawman was selected from the Riverbend program for his completeness both phenotypically and genotypically with the look of a herd bull and a very impressive and balanced set of figures for growth, carcass, and maternal. 4221 displayed early maturity with strong pre weaning growth to index 108.



BA 221M

| BW | ADJ 205 | ADJ 365 | BW | WW | YW | MK | CED | CEM | CW | MARB | REA | FT |
|----|------------|------------|-----|----|-----|----|------|-----|----|------|------|--------|
| 95 | 746 | 1304 | 3.3 | 55 | 103 | 16 | -6.0 | 1.0 | 31 | 0.68 | 0.49 | -0.017 |



BA 234M

234 Belvin McGregor 4234

MALE #2365978 JANUARY 24 2024 BA 234M PEN 1

Georgina 105'10
GRANDDAM



Sitz Resilient 10208

SHAW CALDWELL 11432

Tehama Mary Blackbird D094

Connealy Earnan 076E

BELVIN GEORGINA 193'18

Belvin Georgina 105'10

Sitz Stellar 726D

Sitz Miss Burgess 1856

Tehama Upward Y238

Tehama Mary Blackbird Y684

Connealy Consensus

Brazila of Conanga 3991 839A

Belvin Rebel 33'05

Belvin Georgina 60'00

McGregor 4234 is the powerhouse of the Caldwell sire group with lots of body mass, length and presence. 4234 has looked impressive from a young age at the side of his powerful Earnan-sired dam, with his added growth and attractive look. 4234 has displayed impressive growth and maturity from an early age posting a 108 WW and YW Index. 4234 stems from a highly potent line of performance females such as 105'10 and 60'00, who both served as donors in our program producing many feature sons and as well as daughters working in our herd.

| BW | ADJ 205 | ADJ 365 | BW | WW | YW | MK | CED | CEM | CW | MARB | REA | FT |
|----|------------|------------|-----|----|-----|----|-----|-----|----|------|------|-------|
| 93 | 745 | 1421 | 1.3 | 63 | 114 | 27 | 0.0 | 3.0 | 36 | 0.50 | 0.29 | 0.024 |

244 Belvin Limit Up 4244

MALE #2365985 JANUARY 27 2024 BA 244M PEN 3

Hoover No Doubt

HART LIMIT UP 0506

Hart Whitney 3206

Belvin Tres Marias Patron 205

BELVIN LADY BLOSSOM 35'14

Belvin Lady Blossom 14'09

Mogck Bullseye

Miss Blackcap Ellston J2

Connealy Cavalry 1149

Hart Whitney 0244

Alston 5384 Catriel F

Tres Marias 6764 Rosanegra 5214

Belvin Rebel 33'05

Belvin Lady Blossom 22'02

| BW | ADJ 205 | ADJ 365 | BW | WW | YW | MK | CED | CEM | CW | MARB | REA | FT |
|----|------------|------------|-----|----|----|----|-----|------|----|------|------|-------|
| 80 | 686 | 1322 | 1.8 | 50 | 88 | 27 | 3.0 | 11.0 | 39 | 0.64 | 0.48 | 0.001 |



BA 244M



BA 245M

| BW | ADJ 205 | ADJ 365 | BW | WW | YW | MK | CED | CEM | CW | MARB | REA | FT |
|----|------------|------------|-----|----|-----|----|-----|-----|----|------|------|-------|
| 94 | 725 | 1355 | 2.3 | 59 | 102 | 24 | 0.0 | 4.0 | 49 | 0.77 | 0.80 | 0.023 |

245

Belvin Minister 4245

MALE #2365986 JANUARY 27 2024 BA 245M PEN 1

Hoover No Doubt

HART LIMIT UP 0506

Hart Whitney 3206

Daines King Tut 30A

DAINES MISSIE 85C

D. R. Miss Missy 5Z

Mogck Bullseye

Miss Blackcap Ellston J2

Connealy Cavalry 1149

Hart Whitney 0244

Daines Ranch Tiger Torch 5Y

Daines Kruizin Magic 2U

JL Post Master 0088

Daines Miss Missy 62X

248

Belvin Limit Up 4248

MALE #2365989 JANUARY 27 2024 BA 248M PEN 3

Hoover No Doubt

HART LIMIT UP 0506

Hart Whitney 3206

HF El Tigre 28U

BELVIN LADY BLOSSOM 95'15

Belvin Lady Blossom 12'04

Mogck Bullseye

Miss Blackcap Ellston J2

Connealy Cavalry 1149

Hart Whitney 0244

HF Kodiak 5R

HF Echo 84R

Vermilion Dateline 7078

Belvin Lady Blossom 23'98

| BW | ADJ 205 | ADJ 365 | BW | WW | YW | MK | CED | CEM | CW | MARB | REA | FT |
|----|------------|------------|-----|----|-----|----|-----|------|----|------|------|-------|
| 85 | 672 | 1284 | 0.9 | 57 | 101 | 32 | 8.0 | 12.0 | 44 | 0.74 | 0.31 | 0.040 |

Minister 4245 will be one of the elite female makers in the offering patterning much like his sire. 4245 comes from a strong ranch cow purchased from the Mark Daines dispersal, he will improve fertility, reduce mature size and add dense muscle and ease of fleshing. Herd sire Limit Up ranks in the top 1% of the Angus population for \$Maternal tabulating traits emphasized for female success and retention. 4245 is one of the heavy muscled bulls with early maturity and will be noticed by many.



BA 248M



BA 250M

249 Belvin Kokanee 4249

MALE #2365990 JANUARY 27 2024 BA 249M PEN 4

Square B Atlantis 8060
BELVIN KOKANEE 2022
Belvin Georgina 14'14

Baldrige Mercenary Doo2
BELVIN ERICA 195'21
Braeside Erica 115'16

S A V Rainfall 6846
Elbanna of Conanga 1209
Belvin Tres Marias Patron 205
Belvin Georgina 33'12
EF Commando 1366
Baldrige Rachel A029
KR Cash 4003
Braeside Erica 173'13

| BW | ADJ 205 | ADJ 365 | BW | WW | YW | MK | CED | CEM | CW | MARB | REA | FT |
|----|------------|------------|------|----|----|----|-----|------|----|------|------|-------|
| 74 | 642 | 1168 | -0.2 | 49 | 80 | 27 | 9.0 | 13.0 | 35 | 0.99 | 0.35 | 0.066 |

250 Belvin Matterhorn 4250

MALE #2365991 JANUARY 28 2024 BA 250M PEN 1

S S Niagara Z29
RIVERBEND EVEREST H1231
Riverbend Rita D1008

SAC Conversation
BELVIN GEORGINA 71'18
Belvin Georgina 81'16

Hoover Dam
JET S S X144
V A R Generation 2100
Riverbend Rita B1156
Silveiras Conversion 8064
Lafkins Farrah 0250
HF Syndicate 65B
Belvin Georgina 95'14

| BW | ADJ 205 | ADJ 365 | BW | WW | YW | MK | CED | CEM | CW | MARB | REA | FT |
|----|------------|------------|-----|----|-----|----|-----|-----|----|------|------|-------|
| 88 | 714 | 1425 | 2.2 | 63 | 111 | 16 | 6.0 | 8.0 | 59 | 0.61 | 1.08 | 0.041 |

Matterhorn 4250 is a feature Everest son who sports a very balanced set of predictions. This big REA bull is long bodied, and deep sided; he will add high yielding red meat and carcass weight to his offspring. 4250's dam is a feast for the eyes and truly one of the unique females in our program, she is moderate statured with bold rib shape, a square hip and exceptional udder. A maternal brother sold to B Bar Cattle.

252 Belvin Roll Call 4252

MALE #2365993 JANUARY 28 2024 BA 252M PEN 4

Brooking Firebrand 6068
BROOKING ROLL CALL 9045
Brooking Beauty 333

Musgrave Sky High 1535
BELVIN DUCHESS 70'19
Remitall Duchess 544U

Brooking Bank Note 4040
Brooking Annie K 390
S A V Harvester 0338
TLA Beauty 6R
Musgrave Big Sky
Flag Queen W 00649
Remitall H Rachis 21R
Remitall Duchess 1L

| BW | ADJ 205 | ADJ 365 | BW | WW | YW | MK | CED | CEM | CW | MARB | REA | FT |
|----|------------|------------|-----|----|----|----|-----|------|----|------|------|-------|
| 82 | 655 | 1150 | 0.2 | 32 | 54 | 34 | 4.0 | -3.0 | 10 | 0.10 | 0.31 | 0.058 |

BA

253 Belvin Lawman 4253

MALE #2366046 JANUARY 28 2024 BA 253M PEN 4

S S Enforcer E812

RIVERBEND LAWMAN J053

Spruce Mtn Rita 8102

Duralta 56S Yellowstone 136X

BELVIN LADY BLOSSOM 157'13

Belvin Lady Blossom 135'08

Sydgen Enhance

S S Miss Daybreak K011 3K17

Baldrige Colonel C251

Black Gold Rita 527

Minburn Yellowstone 56S

Duralta 32R Alliane 189U

Belvin Panther 21'04

Belvin Blossom 52'03

| BW | ADJ 205 | ADJ 365 | BW | WW | YW | MK | CED | CEM | CW | MARB | REA | FT |
|----|------------|------------|-----|----|----|----|------|------|----|------|------|-------|
| 90 | 717 | 1293 | 3.5 | 47 | 86 | 24 | -6.0 | -2.0 | 28 | 0.37 | 0.69 | 0.029 |

256 Belvin Caldwell 4256

MALE #2366048 JANUARY 29 2024 BA 256M PEN 4

Sitz Resilient 10208

SHAW CALDWELL 11432

Tehama Mary Blackbird D094

Baldrige Discovery D121

BELVIN LADY BLOSSOM 209'21

Belvin Lady Blossom 147'13

Sitz Stellar 726D

Sitz Miss Burgess 1856

Tehama Upward Y238

Tehama Mary Blackbird Y684

Fortunes Conquest 224

Baldrige Lady X200

Belvin Heavy Hitter 203'10

Belvin Lady Blossom 17'08

| BW | ADJ 205 | ADJ 365 | BW | WW | YW | MK | CED | CEM | CW | MARB | REA | FT |
|----|------------|------------|-----|----|-----|----|-----|-----|----|------|------|-------|
| 90 | 633 | 1257 | 2.3 | 58 | 105 | 28 | 4.0 | 1.0 | 38 | 0.21 | 0.28 | 0.043 |

258 Belvin Caldwell 4258

MALE #2372664 JANUARY 29 2024 BA 258M PEN 4

Sitz Resilient 10208

SHAW CALDWELL 11432

Tehama Mary Blackbird D094

Belvin Velasquez 203'11

BELVIN LADY BLOSSOM 21'14

Belvin Lady Blossom 54'12

Sitz Stellar 726D

Sitz Miss Burgess 1856

Tehama Upward Y238

Tehama Mary Blackbird Y684

SA V Bismarck 5682

Belvin Lady Blossom 31'96

Belvin Tres Marias Patron 205

Belvin Lady Blossom 45'10

| BW | ADJ 205 | ADJ 365 | BW | WW | YW | MK | CED | CEM | CW | MARB | REA | FT |
|----|------------|------------|-----|----|-----|----|-----|-----|----|-------|------|--------|
| 77 | 713 | 1243 | 1.8 | 61 | 106 | 35 | 5.0 | 2.0 | 30 | -0.05 | 0.87 | -0.023 |

261 Belvin Caldwell 4261

MALE #2366052 JANUARY 31 2024 BA 261M PEN 4

Sitz Resilient 10208

SHAW CALDWELL 11432

Tehama Mary Blackbird D094

Baldrige Mercenary D002

BELVIN MISS MORRISON 75'19

Belvin Miss Morrison 29'15

Sitz Stellar 726D

Sitz Miss Burgess 1856

Tehama Upward Y238

Tehama Mary Blackbird Y684

EF Commando 1366

Baldrige Rachel A029

HF El Tigre 28U

Remitall Miss Morrison 591U

| BW | ADJ 205 | ADJ 365 | BW | WW | YW | MK | CED | CEM | CW | MARB | REA | FT |
|----|------------|------------|------|----|-----|----|------|-----|----|------|------|-------|
| 78 | 678 | 1290 | -1.1 | 67 | 112 | 24 | 15.0 | 9.0 | 39 | 0.71 | 0.76 | 0.021 |

EMBRYO TRANSFER



BA 261M

Miss Morrison 283'23
MATERNAL SISTER





BA 276M

276

Belvin Caldwell 4276

MALE #2366329 FEBRUARY 05 2024 BA 276M PEN 3

Sitz Resilient 10208

SHAW CALDWELL 11432

Tehama Mary Blackbird Dog4

Musgrave Sky High 1535

BELVIN LADY BLOSSOM 86'19

Belvin Lady Blossom 205'12

Sitz Stellar 726D

Sitz Miss Burgess 1856

Tehama Upward Y238

Tehama Mary Blackbird Y684

Musgrave Big Sky

FLAG Queen W 00649

S A V Pioneer 7301

Belvin Lady Blossom 37'01

| BW | ADJ 205 | ADJ 365 | BW | WW | YW | MK | CED | CEM | CW | MARB | REA | FT |
|----|---------|---------|------|----|-----|----|-----|------|----|------|------|-------|
| 81 | 723 | 1311 | -1.1 | 58 | 102 | 35 | 9.0 | 11.0 | 38 | 0.38 | 0.97 | 0.010 |



COLT 286M

284

Belvin Trademark 4284

MALE #2366345 FEBRUARY 07 2024 BA 284M PEN 4

Sitz Logo 12964

HEIKEN TRADEMARK 1018

JCH HKN Lucy 9397

Poss Maverick

BELVIN LADY DI 203'22

Belvin Lady Di 47'16

Sitz Tebow 11860

Sitz Shauna 3152

JCH Chisum 7019

JCH Hazel 6155

Basin Payweight 1682

Poss Pride 5163

KR Cash 4003

Belvin Lady Di 69'14

| BW | ADJ 205 | ADJ 365 | BW | WW | YW | MK | CED | CEM | CW | MARB | REA | FT |
|----|---------|---------|------|----|-----|----|-----|------|----|------|------|-------|
| 78 | 772 | 1393 | -0.3 | 72 | 128 | 30 | 8.0 | 15.0 | 54 | 0.46 | 0.65 | 0.024 |

286

Vader Maul 4286

MALE #2399142 FEBRUARY 07 2024 COLT 286M PEN 3

Sitz Logo 12964

HEIKEN TRADEMARK 1018

JCH HKN Lucy 9397

Poss Maverick

BELVIN LADY BLOSSOM 272'22

Belvin Lady Blossom 160'11

Sitz Tebow 11860

Sitz Shauna 3152

JCH Chisum 7019

JCH Hazel 6155

Basin Payweight 1682

Poss Pride 5163

Belvin Rebel 33'05

Belvin Lady Blossom 7'05

| BW | ADJ 205 | ADJ 365 | BW | WW | YW | MK | CED | CEM | CW | MARB | REA | FT |
|----|---------|---------|------|----|-----|----|-----|-----|----|------|------|-------|
| 79 | 814 | 1448 | -0.6 | 81 | 140 | 26 | 7.0 | 8.0 | 64 | 0.70 | 0.54 | 0.024 |





BA 290M

290 Belvin MT Everest 4290

MALE #2366750 FEBRUARY 09 2024 BA 290M PEN 2

S S Niagara Z29

RIVERBEND EVEREST H1231

Riverbend Rita D1008

Baldrige Discovery D121

BELVIN LADY BLOSSOM 136'18

Belvin Lady Blossom 125'15

Hoover Dam

JET S S X144

V A R Generation 2100

Riverbend Rita B1156

Fortunes Conquest 224

Baldrige Lady X200

Belvin Vector 202'12

Belvin Lady Blossom 55'09

| BW | ADJ 205 | ADJ 365 | BW | WW | YW | MK | CED | CEM | CW | MARB | REA | FT |
|----|---------|---------|------|----|-----|----|------|-----|----|------|------|-------|
| 78 | 751 | 1422 | -0.9 | 65 | 113 | 28 | 16.0 | 8.0 | 53 | 0.55 | 0.71 | 0.044 |

Mt Everest 4290 is a high indexing curve bender, with elite pre and post weaning growth indexes and breed leading calving ease figures. This negative BW bull posted a WW index of 111 and YW of 107. 4290 is a long bodied, smooth muscled bull with added extension, patterning much like his sire. His dam is a moderate, feminine female that is perfect uddered and comes from a productive cow family. Maternal sibs have been selected by the Chotowetz Family, East & West Ranching Co. Ltd., and Puhallo Angus.

296 Belvin Justification 4296

MALE #2367436 FEBRUARY 13 2024 BA 296M PEN 4

Baldrige Vegas Go82

BELVIN JUSTIFICATION 1402

Belvin Rosebud 147'19

S A V Bismarck 5682

BELVIN LADY BLOSSOM 37'14

Belvin Lady Blossom 31'96

Spring Cove Reno 4021

Baldrige Isabel Y69

HA Outside 5307

VTG Rosebud 47B

G A R Grid Maker

S A V Abigale 0451

Leachman Right Time

Belvin Lady Blossom 40'93

| BW | ADJ 205 | ADJ 365 | BW | WW | YW | MK | CED | CEM | CW | MARB | REA | FT |
|----|---------|---------|-----|----|----|----|-----|-----|----|------|------|-------|
| 80 | 735 | 1270 | 1.2 | 59 | 97 | 30 | 3.0 | 4.0 | 35 | 0.87 | 0.35 | 0.024 |

297 Belvin Limit Up 4297

MALE #2367437 FEBRUARY 13 2024 BA 297M PEN 4

Hoover No Doubt

HART LIMIT UP 0506

Hart Whitney 3206

HF El Tigre 28U

BELVIN LADY BLOSSOM 37'15

Belvin Lady Blossom 14'09

Mogck Bullseye

Miss Blackcap Ellston J2

Connealy Cavalry 1149

Hart Whitney 0244

HF Kodiak 5R

HF Echo 84R

Belvin Rebel 33'05

Belvin Lady Blossom 22'02

| BW | ADJ 205 | ADJ 365 | BW | WW | YW | MK | CED | CEM | CW | MARB | REA | FT |
|----|---------|---------|-----|----|-----|----|-----|------|----|------|------|--------|
| 83 | 800 | 1323 | 0.3 | 60 | 104 | 33 | 5.0 | 11.0 | 62 | 0.71 | 0.58 | -0.017 |



300 Belvin Limit Up 4300

MALE #2367440 FEBRUARY 17 2024 BA 300M PEN 3

Hoover No Doubt

HART LIMIT UP 0506

Hart Whitney 3206

Belvin Rebel 33'05

BELVIN EMBLYNETTE 208'11

S A V Emblynette 5486

Mogck Bullseye

Miss Blackcap Ellston J2

Connealy Cavalry 1149

Hart Whitney 0244

F A R Krugerrand 410H

Belvin Georgina 81'03

S A V 8180 Traveler 004

S A V Emblynette 7260

| BW | ADJ 205 | ADJ 365 | BW | WW | YW | MK | CED | CEM | CW | MARB | REA | FT |
|-----|---------|---------|-----|----|-----|----|------|-----|----|------|------|-------|
| 100 | 785 | 1138 | 3.6 | 58 | 103 | 19 | -5.0 | 2.0 | 48 | 0.73 | 0.38 | 0.048 |

305 Coul Momentum 4305

MALE #2367444 FEBRUARY 19 2024 COUL 305M PEN 3

Baldrige Vegas G082

BELVIN JUSTIFICATION 1402

Belvin Rosebud 147'19

Ring Creek El Tigre 9X

COUL GEORGINA 165'12

Belvin Georgina 18'08

Spring Cove Reno 4021

Baldrige Isabel Y69

HA Outside 5307

VTG Rosebud 47B

HF El Tigre 28U

Ring Creek Ambush Lady 10S

Belvin Panther 21'04

Belvin Georgina 60'00

| BW | ADJ 205 | ADJ 365 | BW | WW | YW | MK | CED | CEM | CW | MARB | REA | FT |
|----|---------|---------|------|----|----|----|-----|-----|----|------|------|-------|
| 84 | 854 | 1427 | -0.3 | 51 | 82 | 33 | 8.0 | 0.0 | 43 | 0.36 | 0.81 | 0.017 |

314 Belvin Limit Up 4314

MALE #2367560 FEBRUARY 26 2024 BA 314M PEN 3

Hoover No Doubt

HART LIMIT UP 0506

Hart Whitney 3206

LLB 902J Alliance 668S

BELVIN LADY BLOSSOM 184'10

Belvin Lady Blossom 83'07

Mogck Bullseye

Miss Blackcap Ellston J2

Connealy Cavalry 1149

Hart Whitney 0244

T D M Alliance 904

Dryland EXT Queen -945-

LLB Marshall 465R

Belvin Lady Blossom 6'96

| BW | ADJ 205 | ADJ 365 | BW | WW | YW | MK | CED | CEM | CW | MARB | REA | FT |
|----|---------|---------|-----|----|----|----|-----|-----|----|------|------|-------|
| 92 | 811 | 1346 | 0.8 | 57 | 95 | 35 | 6.0 | 4.0 | 42 | 1.01 | 0.25 | 0.057 |



It is a great pleasure to be working with the hard-working Hamilton and Elliot families at Belvin Angus. The Belvin name carries great history within the Angus breed and has offered quality angus genetics to the cattle industry for many years. There is a large selection of bulls on offer at Belvin Angus this year, and the quality is very consistent across the entire group.

The bulls are raised on pasture with nothing but their mother's milk during the summer months. The pairs consume free choice mineral throughout the grazing months and are also on a year-round organic mineral program, enhancing the sale bulls' health and immunity. The bulls transition to a forage-based, total mixed ration once they are weaned.

The total mixed ration is designed to promote lean muscle growth, ensuring longevity is the main priority when developing the bulls. The bulls total mixed ration also contains a chelated

mineral package throughout the feeding period which enhances the bull's immunity and complements their growth patterns as they develop. Rumen health is continuously being monitored during the bulls feeding period and is adjusted accordingly to meet environmental and seasonal challenges.

If you have any questions about the nutrition or sale bulls, please feel free to contact me.

Best of luck to the Belvin Angus crew with this year's sale bulls!



© More Than Just Feed

Brayden Schmidt
Beef Advisor
(403) 439-0043

brayden.schmidt@bullseyefeeds.ca



318 Belvin Revival 4318

MALE #2367563 FEBRUARY 27 2024 BA 318M PEN 4

Woodhill Relevance
WOODHILL REVIVAL H028
 Woodhill Evergreen A43-F039

74-51 Sudden Look 1023
ANCHORAGE BLACKBIRD 9021
 EXAR Blackbird 0698

Connealy Confidence Plus
 Woodhill Blackbird X197-Z7
 Basin Payweight 1682
 Woodhill Evergreen Y10-A43
 B C Lookout 7024
 EXG Lucy P061 R3
 Rito 6EM3 of 4L1 Emblazon
 EXAR Blackbird 4448

4318 is one of the impressive younger bulls in the sale with lots of shape, eye appeal, and the correctness of the Revival sire group. 4318 is a very complete and balanced bull both on paper and in the flesh with calving ease and performance built in. His mother is a big volume, attractive made female from the Anchorage program who represents the time-tested Blackbird cow family. A maternal sister was a sale day favorite in our 2023 female sale, selected by Clydevue Farms.

| BW | ADJ 205 | ADJ 365 | BW | WW | YW | MK | CED | CEM | CW | MARB | REA | FT |
|----|------------|------------|-----|----|-----|----|------|-----|----|------|------|-------|
| 86 | 740 | 1281 | 0.7 | 66 | 118 | 15 | 10.0 | 7.0 | 37 | 0.58 | 0.48 | 0.038 |

Blackbird 103'22 MATERNAL SISTER



Lemieux 3011 PATERNAL BROTHER



Lexus 3179 PATERNAL BROTHER



319 Belvin Jameson 4319

MALE #2385258 FEBRUARY 27 2024 BA 319M PEN 3

Basin Deposit 6249
BASIN JAMESON 1076
 Basin Joy 9140

S A V Pioneer 7301
BELVIN LADY BLOSSOM 23'12
 Belvin Lady Blossom 62'06

Basin Advance 3134
 Basin Lucy 4288
 EXAR Monumental 6056B
 Basin Joy 5367
 S A V Final Answer 0035
 S A V Blackbird 5297
 Peak Dot Stockman 254N
 Belvin Lady Blossom 71'03

| BW | ADJ 205 | ADJ 365 | BW | WW | YW | MK | CED | CEM | CW | MARB | REA | FT |
|----|---------|---------|-----|----|-----|----|-----|-----|----|------|------|-------|
| 95 | 803 | 1408 | 3.3 | 89 | 137 | 16 | 1.0 | 3.0 | 66 | 0.66 | 0.57 | 0.025 |

EMBRYO TRANSFER

320 Belvin Jameson 4320

MALE #2372665 FEBRUARY 27 2024 BA 320M PEN 3

Basin Deposit 6249
BASIN JAMESON 1076
 Basin Joy 9140

S A V Pioneer 7301
BELVIN LADY BLOSSOM 23'12
 Belvin Lady Blossom 62'06

Basin Advance 3134
 Basin Lucy 4288
 EXAR Monumental 6056B
 Basin Joy 5367
 S A V Final Answer 0035
 S A V Blackbird 5297
 Peak Dot Stockman 254N
 Belvin Lady Blossom 71'03

| BW | ADJ 205 | ADJ 365 | BW | WW | YW | MK | CED | CEM | CW | MARB | REA | FT |
|----|---------|---------|-----|----|-----|----|-----|-----|----|------|------|-------|
| 98 | 803 | 1351 | 2.8 | 88 | 136 | 13 | 5.0 | 8.0 | 58 | 0.45 | 0.73 | 0.006 |

EMBRYO TRANSFER

321 Belvin Jameson 4321

MALE #2385259 FEBRUARY 28 2024 BA 321M PEN 3

Basin Deposit 6249
BASIN JAMESON 1076
 Basin Joy 9140

S A V Pioneer 7301
BELVIN LADY BLOSSOM 23'12
 Belvin Lady Blossom 62'06

Basin Advance 3134
 Basin Lucy 4288
 EXAR Monumental 6056B
 Basin Joy 5367
 S A V Final Answer 0035
 S A V Blackbird 5297
 Peak Dot Stockman 254N
 Belvin Lady Blossom 71'03

| BW | ADJ 205 | ADJ 365 | BW | WW | YW | MK | CED | CEM | CW | MARB | REA | FT |
|----|---------|---------|-----|----|-----|----|-----|-----|----|------|------|--------|
| 93 | 743 | 1328 | 3.8 | 84 | 131 | 13 | 4.0 | 9.0 | 63 | 1.02 | 0.62 | -0.003 |

These three ET brothers combine our feature Lady Blossom cow family with the Basin Angus sensation Jameson. These Jameson sons are peas in a pod and all display breed leading growth traits matched with strong end product merit and high carcass weight. These three are long bodied, athletic bulls who are very good footed and look to have added libido. They are bulls who will get out and cover the country and service extra females. With big WW and YW indexes these bulls with sire a set of feeder cattle that will grow and grade. EMBRYO TRANSFER





329 Belvin Limit Up 4329

MALE #2367727 MARCH 12 2024 BA 329M PEN 4

| | |
|------------------------------------|-----------------------------|
| Hoover No Doubt | Mogck Bullseye |
| HART LIMIT UP 0506 | Miss Blackcap Ellston J2 |
| Hart Whitney 3206 | Connealy Cavalry 1149 |
| | Hart Whitney 0244 |
| Belvin Velasquez 203'11 | S A V Bismarck 5682 |
| BELVIN MISS MORRISON 130'16 | Belvin Lady Blossom 31'96 |
| Remitall Miss Morrison 591U | Remitall H Rachis 21R |
| | Willabar Miss Morrison 103N |

| BW | ADJ | ADJ | BW | WW | YW | MK | CED | CEM | CW | MARB | REA | FT |
|----|-----|------|-----|----|-----|----|-----|-----|----|------|------|-------|
| | 205 | 365 | | | | | | | | | | |
| 90 | 797 | 1363 | 2.0 | 65 | 105 | 23 | 7.0 | 6.0 | 53 | 0.60 | 0.59 | 0.018 |





BA extra age bulls

TRAIT-BALANCED GENETIC PROGRESSION



404 Belvin Landmark 3404

MALE #2333429 MAY 17 2023 BA 404L PEN 5

Sitz Logo 12964

HEIKEN TRADEMARK 1018

JCH HKN Lucy 9397

Brooking Roll Call 9045

BELVIN LADY BLOSSOM 4'11'21

Belvin Lady Blossom 301'18

Sitz Tebow 11860

Sitz Shauna 3152

JCH Chisum 7019

JCH Hazel 6155

Brooking Firebrand 6068

Brooking Beauty 333

HF Junction 18B

Belvin Lady Blossom 28'13

Landmark 3404 is one of the elite bulls in the offering with curve bending figures and herd sire presence. 3404 has an eye catching style with bold muscle shape, a soft middle and sound structure, while standing on a solid foot and ideal leg. Landmark was an early favorite along side his first calving dam, with his early maturity and impressive growth earning the highest WW ratio in the group at 114. 3404 will rival any for his combination of muscle density, maternal power and calving ease.

| BW | ADJ 205 | ADJ 365 | BW | WW | YW | MK | CED | CEM | CW | MARB | REA | FT |
|----|------------|------------|------|----|-----|----|-----|------|----|------|------|-------|
| 72 | 782 | 1284 | -0.1 | 65 | 104 | 23 | 9.0 | 11.0 | 27 | 0.22 | 0.09 | 0.023 |

Trademark 1018 SIRE



Roll Call 9045 MATERNAL GRANDSIRE



Roll Call 2426 FULL BROTHER TO DAM





BA 403L

| BW | ADJ 205 | ADJ 365 | BW | WW | YW | MK | CED | CEM | CW | MARB | REA | FT |
|----|------------|------------|------|----|-----|----|------|------|----|------|------|-------|
| 65 | 723 | 1243 | -2.6 | 67 | 112 | 27 | 10.0 | 14.0 | 42 | 0.35 | 0.33 | 0.044 |

403 **Belvin Lotto 3403**
MALE #2333428 MAY 13 2023 BA 403L PEN 5

Sitz Logo 12964

HEIKEN TRADEMARK 1018

JCH HKN Lucy 9397

Sitz Major 707F

BELVIN MISSIE 415'21

Belvin Missie 323'19

Sitz Tebow 11860

Sitz Shauna 3152

JCH Chisum 7019

JCH Hazel 6155

Sitz Stellar 726D

Sitz Lady 383D

Baldrige Discovery D121

Elliot 3E Miss Briar 5118

Lotto 3403 is a calving ease deluxe extra age bull, with BW and CED figures both in the top percentiles of the breed, true to his lineage combining Logo and Stellar. This long bodied, big outlined bull posted impressive growth at both WW and YW with index's at 105 and 107, all as a heifers first calf. His young dam is an early favorite in the summer program with a beautiful udder and feminine design, typical of the Missie cow family.

405 **Belvin La Nina 3405**
MALE #2338469 MAY 20 2023 BA 405L PEN 5

S A V Rainfall 6846

SQUARE B ATLANTIS 8060

Elbanna of Conanga 1209

Belvin Panic Switch 2'11

BELVIN GEORGINA 45'15

Belvin Georgina 60'00

Coleman Charlo 0256

S A V Blackcap May 4136

Connealy Consensus

Elbasta of Conanga 9703

S A V Pioneer 7301

Belvin Lady Blossom 14'09

G D A R Rolls Royce 203

Belvin Georgina 52'95

La Nina 3405 is a featured Atlantis son from our ET program. 4405 blends the powerful donor Georgina 45'15, who most notably is the granddam of May City, with the world-renowned Elbanna of Conanga 1209. This combination will be sure to leave you an outstanding set of females with reduced mature size and increased fleshing ability. With large scrotal and an athletic design, look to 4405 to cover a large group of cows this season. A full brother was selected last year by Whey Lake Farms.



BA 405L

| BW | ADJ 205 | ADJ 365 | BW | WW | YW | MK | CED | CEM | CW | MARB | REA | FT |
|----|------------|------------|-----|----|----|----|-----|-----|----|------|------|-------|
| 92 | 702 | 1192 | 2.0 | 45 | 79 | 30 | 0.0 | 5.0 | 16 | 0.37 | 0.45 | 0.016 |

Georgina 45'15 DAM





Georgina 6'19 DAM



BA 407L

| BW | ADJ 205 | ADJ 365 | BW | WW | YW | MK | CED | CEM | CW | MARB | REA | FT |
|----|------------|------------|------|----|-----|----|------|------|----|------|------|-------|
| 78 | 702 | 1251 | -0.6 | 70 | 115 | 22 | 14.0 | 14.0 | 45 | 0.75 | 1.05 | 0.027 |

407 Belvin Laramie 3407

MALE #2333430 MAY 21 2023 BA 407L PEN 5

Woodhill Relevance

WOODHILL REVIVAL H028

Woodhill Evergreen A43-F039

Baldrige Mercenary D002

BELVIN GEORGINA 6'19

Belvin Georgina 121'17

Connealy Confidence Plus

Woodhill Blackbird X197-Z7

Basin Payweight 1682

Woodhill Evergreen Y10-A43

EF Commando 1366

Baldrige Rachel A029

HF Syndicate 65B

Belvin Georgina 45'15

Laramie 3407 is the lone extra age Revival son who covers all the bases, with elite calving ease and top tier growth figures making him a very versatile breeding tool. 3407 matches a +14 CED and negative BW figures with the highest postweaning growth of his contemporary group, to earn a YW ratio of 115. The combination of Revival and Mercenary has been very successful through two calf crops and delivers excellent carcass merit with both elite MARB and increased REA.

413 Belvin Trademark 3413

MALE #2333447 MAY 27 2023 BA 413L PEN 5

Sitz Logo 12964

HEIKEN TRADEMARK 1018

JCH HKN Lucy 9397

Baldrige Alternative E125

BELVIN ERELLA 434'21

Elliot 3E Erella 03X

Sitz Tebow 11860

Sitz Shauna 3152

JCH Chisum 7019

JCH Hazel 6155

Poss Easy Impact 0119

Baldrige Blackbird A030

SA V Final Answer 0035

Willow Erella R10

Trademark 3413 marks another high growth, elite calving ease son of Trademark, adding to this consistent sire group. 3413 has BW and CED figures both in the top 1% of the Angus breed making him a sleep all night heifer bull. This quiet natured bull carries himself in a very attractive manner with a smooth and fault free pattern, on top of a perfect foot and structural correctness. 3413 is backed by our strong Erella 03X donor female who adds to his maternal value.



Erella 03X GRANDDAM



BA 413L

| BW | ADJ 205 | ADJ 365 | BW | WW | YW | MK | CED | CEM | CW | MARB | REA | FT |
|----|------------|------------|------|----|-----|----|------|------|----|------|------|-------|
| 68 | 702 | 1176 | -2.4 | 62 | 107 | 23 | 14.0 | 15.0 | 39 | 0.63 | 0.44 | 0.015 |

418

Belvin Left Lane 3418

MALE #2333452 JUNE 01 2023 BA 418L PEN 5

Vermilion Reride F116

BELVIN MAY CITY 0136

Belvin Georgina 121'17

Duralta 56S Yellowstone 136X

BELVIN GEORGINA 71'15

Belvin Georgina 33'12

Vermilion Re-Ride

Vermilion Lucy 5087

HF Syndicate 65B

Belvin Georgina 45'15

Minburn Yellowstone 56S

Duralta 32R Alliane 189U

Ring Creek El Tigre 9X

Belvin Georgina 18'10



BA 418L

426

Belvin Leguas 3426

MALE #2333459 JUNE 09 2023 BA 426L PEN 5

Vermilion Reride F116

BELVIN MAY CITY 0136

Belvin Georgina 121'17

Belvin Velasquez 203'11

BELVIN TORCAZA 103'16

Belvin Tres Maria Torcaza 201W

Vermilion Re-Ride

Vermilion Lucy 5087

HF Syndicate 65B

Belvin Georgina 45'15

S A V Bismarck 5682

Belvin Lady Blossom 31'96

Tres Marias 6301 Zorzal

Tres Marias 5214 Torcaza

Leguas 3426

FRONT



Leguas 3426 is the cowboy bull in the extra age pen, he is big topped and packed full of muscle. Noted from a young age, 3426 has a powerful makeup and an athletic design with perfect feet, much like his sire May City. The dam of 3426 is ideal in every way, being very feminine and perfect uddered. The Torcaza cow family has been very productive with many acting as donors. Maternal brothers to 3426 are at Jahnke Ranches, Dunlevy Ranch, and Fahey Cattle Co.



BA 426L

428

Belvin Local 3428

MALE #2333461 JUNE 11 2023 BA 428L PEN 5

Vermilion Reride F116

BELVIN MAY CITY 0136

Belvin Georgina 121'17

JNJ Pokerface 10C

BELVIN LADY BLOSSOM 252'17

Belvin Lady Blossom 141'11

Vermilion Re-Ride

Vermilion Lucy 5087

HF Syndicate 65B

Belvin Georgina 45'15

Belvin Airwolf 4'13

Happyvale T Neonla 19S

Belvin Rebel 33'05

Belvin Lady Blossom 64'04

| BW | ADJ 205 | ADJ 365 | BW | WW | YW | MK | CED | CEM | CW | MARB | REA | FT |
|----|------------|------------|-----|----|----|----|-----|-----|----|------|------|--------|
| 84 | 644 | 1061 | 0.6 | 36 | 61 | 16 | 3.0 | 5.0 | 19 | 0.49 | 0.56 | -0.017 |



BA 428L

430

Belvin Las Cruces 3430

MALE #2333463 JUNE 12 2023 BA 430L PEN 5

Vermilion Reride F116

BELVIN MAY CITY 0136

Belvin Georgina 121'17

B C Lookout 7024

BELVIN 3E BLACK ANGEL 54'18

Werner Black Angel 1299

Vermilion Re-Ride

Vermilion Lucy 5087

HF Syndicate 65B

Belvin Georgina 45'15

O C C Legend 616L

Gibbet Hill Mignonne E37

SA V Net Worth 4200

Clearwater Black Angel 395

| BW | ADJ 205 | ADJ 365 | BW | WW | YW | MK | CED | CEM | CW | MARB | REA | FT |
|----|------------|------------|-----|----|----|----|-----|-----|----|------|------|-------|
| 80 | 686 | 1178 | 0.1 | 48 | 86 | 27 | 7.0 | 5.0 | 29 | 0.38 | 0.63 | 0.021 |

Black Angel 54'18

DAM



Las Cruces 3430 is a very exciting herd sire prospect combining our stud sire May City with the famed Black Angel cow family, who has been responsible for a very potent arsenal of donor females in the breed. 2430 puts it all together from the ground up with excellent feet, sound structure, added muscle and an attractive look. The dam of 3430 is a herd favorite who we feel is ideal in every way, with her angular design, udder quality, sound structure and feminine look. This modest BW bull combines some of the top females in our program, delivering immense maternal strength.



BA 430L

431 Belvin Legit 3431

MALE #2333464 JUNE 13 2023 BA 431L PEN 5

Vermilion Reride F116
BELVIN MAY CITY 0136
Belvin Georgina 121'17

Poss Maverick
BELVIN MISSIE 329'19
KFC 839L Miss Legacy 019

Vermilion Re-Ride
Vermilion Lucy 5087
HF Syndicate 65B
Belvin Georgina 45'15
Basin Payweight 1682
Poss Pride 5163
O C C Legacy 839L
KFC 4532 Miss Rainmaker

| BW | ADJ | ADJ | BW | WW | YW | MK | CED | CEM | CW | MARB | REA | FT |
|----|-----|-----|-----|----|-----|----|-----|------|----|------|------|-------|
| 90 | 205 | 365 | 1.6 | 66 | 106 | 17 | 5.0 | 11.0 | 44 | 0.92 | 1.12 | 0.018 |

433 Belvin Limelight 3433

MALE #2339414 JUNE 27 2023 BA 433L PEN 5

S A V Rainfall 6846
SQUARE B ATLANTIS 8060
Elbanna of Conanga 1209

Wiwa Creek Monarch 248'12
BELVIN ANDRIA 48'15
Belvin Tres Marias Andria 7313

Coleman Charlo 0256
S A V Blackcap May 4136
Connealy Consensus
Elbasta of Conanga 9703
Wiwa Creek Monarch 53'08
Wiwa Creek Evergreen 623'06
Tres Marias 6301 Zorzal
Tres Marias 7358 LA Andria T/E

| BW | ADJ | ADJ | BW | WW | YW | MK | CED | CEM | CW | MARB | REA | FT |
|----|-----|------|-----|----|-----|----|------|-----|----|------|------|-------|
| 92 | 689 | 1125 | 2.6 | 66 | 112 | 31 | -1.0 | 8.0 | 48 | 0.31 | 0.67 | 0.021 |

434 Belvin Logan Lake 3434

MALE #2339408 JUNE 29 2023 BA 434L PEN 5

S A V Rainfall 6846
SQUARE B ATLANTIS 8060
Elbanna of Conanga 1209

Wiwa Creek Monarch 248'12
BELVIN ANDRIA 48'15
Belvin Tres Marias Andria 7313

Coleman Charlo 0256
S A V Blackcap May 4136
Connealy Consensus
Elbasta of Conanga 9703
Wiwa Creek Monarch 53'08
Wiwa Creek Evergreen 623'06
Tres Marias 6301 Zorzal
Tres Marias 7358 LA Andria T/E

| BW | ADJ | ADJ | BW | WW | YW | MK | CED | CEM | CW | MARB | REA | FT |
|----|-----|------|-----|----|-----|----|------|-----|----|------|------|-------|
| 86 | 667 | 1103 | 2.8 | 61 | 104 | 33 | -1.0 | 5.0 | 56 | 0.36 | 0.93 | 0.037 |



BA 434L

436 Belvin Liner 3436

MALE #2333466 JULY 05 2023 BA 436L PEN 5

Vermilion Reride F116
BELVIN MAY CITY 0136
Belvin Georgina 121'17

S A V Resource 1441
BELVIN 3E LEMAY 250'17
Elliot 3E Lemay 1029

Vermilion Re-Ride
Vermilion Lucy 5087
HF Syndicate 65B
Belvin Georgina 45'15
Rito 707 of Ideal 3407 7075
S A V Blackcap May 4136
S A V Bismarck 5682
Willow Lemay To7

| BW | ADJ | ADJ | BW | WW | YW | MK | CED | CEM | CW | MARB | REA | FT |
|----|-----|------|-----|----|-----|----|-----|-----|----|------|------|--------|
| 90 | 713 | 1153 | 3.7 | 66 | 104 | 22 | 3.0 | 5.0 | 46 | 0.35 | 1.04 | -0.006 |



BA 436L

439 Belvin Long Shot 3439

MALE #2333468 JULY 12 2023 BA 439L PEN 5

Vermilion Reride F116
BELVIN MAY CITY 0136
Belvin Georgina 121'17

Baldrige Compass Co50
BELVIN LADY BLOSSOM 11'17
Belvin Lady Blossom 95'15

Vermilion Re-Ride
Vermilion Lucy 5087
HF Syndicate 65B
Belvin Georgina 45'15
EF Commando 1366
Baldrige Isabel Y69
HF El Tigre 28U
Belvin Lady Blossom 12'04

| BW | ADJ | ADJ | BW | WW | YW | MK | CED | CEM | CW | MARB | REA | FT |
|----|-----|------|-----|----|----|----|-----|------|----|------|------|-------|
| 96 | 712 | 1181 | 3.0 | 56 | 89 | 22 | 1.0 | -2.0 | 27 | 0.50 | 0.39 | 0.006 |



BA 439L



BA open heifers

TRAIT-BALANCED GENETIC PROGRESSION

20

Belvin Echo 20'24

FEMALE #2362436 DECEMBER 21 2023 BA 4020L

*Sitz Resilient 10208***SHAW CALDWELL 11432***Tehama Mary Blackbird Dog4**Bar-E-L Natural Law 52Y***BELVIN ECHO 3'21***HF Echo 111Y**Sitz Stellar 726D**Sitz Miss Burgess 1856**Tehama Upward Y238**Tehama Mary Blackbird Y684**S A V Bismarck 5682**Bar-E-L Magnolia 143K**HF El Tigre 28U**HF Echo 207N*

| BW | ADJ 205 | ADJ 365 | BW | WW | YW | MK | CED | CEM | CW | MARB | REA | FT |
|----|------------|------------|-----|----|-----|----|-----|-----|----|------|------|-------|
| 81 | 596 | | 1.4 | 61 | 112 | 36 | 4.0 | 6.0 | 42 | 0.46 | 0.46 | 0.046 |



BA 4020L

36

Belvin Erica 36'24

FEMALE #2362760 DECEMBER 26 2023 BA 4036L

*Tehama Tahoe B767***HOOVER HIGH COUNTRY Z422***Miss Blackcap Ellston R199**Baldrige Mercenary Doo2***BELVIN ERICA 98'19***Belvin Erica 106'15**Tehama Upward Y238**Tehama Mary Blackbird Y684**Hoover No Doubt**Miss Blackcap Ellston K317**EF Commando 1366**Baldrige Rachel Ao29**Duralta 56S Yellowstone 136X**Belvin Erica 76'11*

| BW | ADJ 205 | ADJ 365 | BW | WW | YW | MK | CED | CEM | CW | MARB | REA | FT |
|----|------------|------------|-----|----|-----|----|-----|-----|----|------|------|-------|
| 72 | 597 | | 1.2 | 65 | 112 | 23 | 2.5 | 8.5 | 56 | 0.80 | 0.48 | 0.017 |



BA 4036L

52

Belvin Erella 52'24

FEMALE #2363058 DECEMBER 29 2023 BA 4052L

*Sitz Stellar 726D***SITZ MAJOR 707F***Sitz Lady 383D**Baldrige Alternative E125***BELVIN ERELLA 171'22***Elliot 3E Erella 03X**Mohmen Substantial 272**Sitz Pride 200B**Sitz Bullseye 10594**Sitz Lady 319Y**Poss Easy Impact 0119**Baldrige Blackbird Ao30**S A V Final Answer 0035**Willow Erella R10*

| BW | ADJ 205 | ADJ 365 | BW | WW | YW | MK | CED | CEM | CW | MARB | REA | FT |
|----|------------|------------|-----|----|-----|----|-----|------|----|------|------|-------|
| 76 | 603 | | 0.8 | 62 | 112 | 20 | 6.0 | 10.0 | 43 | 0.61 | 0.69 | 0.039 |



BA 4052L

77

Belvin Emblynette 77'24

FEMALE #2363298 JANUARY 01 2024 BA 77M

*S S Enforcer E812***RIVERBEND LAWMAN J053***Spruce Mtn Rita 8102**HF Junction 18B***BELVIN EMBLYNETTE 62'18***Belvin Emblynette 64'14**Sydgen Enhance**S S Miss Daybreak Ko11 3K17**Baldrige Colonel C251**Black Gold Rita 527**Young Dale Yohann 39Y**HF Elsiemere 106W**Duralta 56S Yellowstone 136X**Belvin Emblynette 208'11*

| BW | ADJ 205 | ADJ 365 | BW | WW | YW | MK | CED | CEM | CW | MARB | REA | FT |
|----|------------|------------|-----|----|-----|----|------|-----|----|------|------|-------|
| 90 | 600 | | 2.5 | 57 | 102 | 26 | -2.0 | 1.0 | 28 | 0.73 | 0.45 | 0.032 |



BA 77M



Miss Legacy 019 MATERNAL GRANDDAM



BA 101M

| BW | ADJ 205 | ADJ 365 | BW | WW | YW | MK | CED | CEM | CW | MARB | REA | FT |
|----|------------|------------|-----|----|----|----|-----|------|----|------|------|-------|
| 77 | 622 | | 0.5 | 51 | 87 | 27 | 7.5 | 12.0 | 34 | 0.80 | 0.37 | 0.023 |

101

Belvin Missie 101'24

FEMALE #2363526 JANUARY 04 2024 BA 101M

Hoover No Doubt

HART LIMIT UP 0506

Hart Whitney 3206

Varilek Geddes 7068 MAF

BELVIN MISSIE 118'21

KFC 839L Miss Legacy 019

Mogck Bullseye

Miss Blackcap Ellston J2

Connealy Cavalry 1149

Hart Whitney 0244

KM Broken Bow 002

Varilek Goldie 5051 506

O C C Legacy 839L

KFC 4532 Miss Rainmaker

Missie 101'24 is a stout made Limit Up daughter with extra rib shape and body, tied together with an angular front end. The maternal grandam of 101'24 is one of the prevalent donors in our program over the last decade, with sons, daughters and embryos selling across Western Canada. The top end 141 bull in this sale is a direct son of this great female. The Limit Up offspring, male and female, are notable for their foot quality and shape, and this feature heifer is no exception.

112

Belvin Lady Blossom 112'24

FEMALE #2363675 JANUARY 05 2024 BA 112M

Woodhill Relevance

WOODHILL REVIVAL H028

Woodhill Evergreen A43-F039

Brooking Roll Call 9045

BELVIN LADY BLOSSOM 152'21

Belvin Lady Blossom 170'17

Connealy Confidence Plus

Woodhill Blackbird X197-Z7

Basin Payweight 1682

Woodhill Evergreen Y10-A43

Brooking Firebrand 6068

Brooking Beauty 333

Belvin Velasquez 203'11

Belvin Lady Blossom 9'11

| BW | ADJ 205 | ADJ 365 | BW | WW | YW | MK | CED | CEM | CW | MARB | REA | FT |
|----|------------|------------|-----|----|-----|----|-----|-----|----|------|------|-------|
| 79 | 643 | | 0.5 | 58 | 104 | 25 | 8.0 | 9.0 | 43 | 0.47 | 0.71 | 0.040 |

159

Coul Georgina 159'24

FEMALE #2368412 JANUARY 11 2024 COUL 159M

Sitz Resilient 10208

SHAW CALDWELL 11432

Tehama Mary Blackbird Dog4

Baldrige Vegas Go82

BELVIN GEORGINA 35'22

Belvin Georgina 121'17

Sitz Stellar 726D

Sitz Miss Burgess 1856

Tehama Upward Y238

Tehama Mary Blackbird Y684

Spring Cove Reno 4021

Baldrige Isabel Y69

HF Syndicate 65B

Belvin Georgina 45'15

| BW | ADJ 205 | ADJ 365 | BW | WW | YW | MK | CED | CEM | CW | MARB | REA | FT |
|----|------------|------------|-----|----|-----|----|-----|-----|----|------|------|-------|
| 76 | 612 | | 0.0 | 60 | 105 | 34 | 8.0 | 9.0 | 34 | 0.59 | 0.82 | 0.018 |



BA 112M



COUL 159M



BA 272M

| BW | ADJ 205 | ADJ 365 | BW | WW | YW | MK | CED | CEM | CW | MARB | REA | FT |
|----|------------|------------|-----|----|----|----|-----|-----|----|------|------|-------|
| 78 | 548 | | 0.2 | 46 | 81 | 33 | 7.0 | 1.0 | 21 | 0.74 | 0.31 | 0.083 |

272 Belvin Lady Blossom 272'24

FEMALE #2366321 FEBRUARY 03 2024 BA 272M

Square B Atlantis 8060

BELVIN KOKANEE 2022

Belvin Georgina 14'14

Baldrige Discovery D121

LADY BLOSSOM 146'21

Belvin Lady Blossom 23'12

S A V Rainfall 6846

Elbanna of Conanga 1209

Belvin Tres Marias Patron 205

Belvin Georgina 33'12

Fortunes Conquest 224

Baldrige Lady X200

S A V Pioneer 7301

Belvin Lady Blossom 62'06

Lady Blossom 272'24 is a moderate framed tank of a heifer, with show ring eye appeal. She features the muscle, hair and bone that have defined the Kokanee sire group. The dan of 272'24 is a big bodied, moderate framed cow, who is out of our Lady Blossom 23'12 donor cow. The featured lot 164, 319, 320 and 321 bulls are maternal siblings to the dam of 272'24.

166 Belvin Lady Blossom 166'24

FEMALE #2364576 JANUARY 12 2024 BA 166M PEN

Brooking Firebrand 6068

BROOKING ROLL CALL 9045

Brooking Beauty 333

Sitz Major 707F

BELVIN LA LADY BLOSSOM 53'20

Belvin Lady Blossom 57'18

Brooking Bank Note 4040

Brooking Annie K 390

S A V Harvester 0338

TLA Beauty 6R

Sitz Stellar 726D

Sitz Lady 383D

SAC Conversation

Belvin Lady Blossom 54'16

| BW | ADJ 205 | ADJ 365 | BW | WW | YW | MK | CED | CEM | CW | MARB | REA | FT |
|----|------------|------------|-----|----|-----|----|------|-----|----|------|------|-------|
| 80 | 624 | | 3.0 | 60 | 103 | 30 | -1.0 | 5.0 | 34 | 0.10 | 0.56 | 0.027 |

274 Belvin LA Lady Blossom 274'24

FEMALE #2366324 FEBRUARY 04 2024 BA 274M PEN

Baldrige Vegas G082

BELVIN JUSTIFICATION 1402

Belvin Rosebud 147'19

SAC Conversation

BELVIN LADY BLOSSOM 57'18

Belvin Lady Blossom 54'16

Spring Cove Reno 4021

Baldrige Isabel Y69

HA Outside 5307

VTG Rosebud 47B

Silveiras Conversion 8064

Laflins Farrah 0250

HF Junction 18B

Belvin Lady Blossom 76'12

| BW | ADJ 205 | ADJ 365 | BW | WW | YW | MK | CED | CEM | CW | MARB | REA | FT |
|----|------------|------------|-----|----|----|----|------|-----|----|------|------|-------|
| 88 | 628 | | 4.0 | 53 | 99 | 33 | -4.0 | 2.0 | 35 | 0.41 | 0.76 | 0.013 |



BA 166M



BA 274M



Ellen 194'20 DAM



BA 293M

| BW | ADJ 205 | ADJ 365 | BW | WW | YW | MK | CED | CEM | CW | MARB | REA | FT |
|----|------------|------------|------|----|-----|----|------|-----|----|------|------|-------|
| 71 | 612 | | -1.4 | 63 | 109 | 38 | 10.0 | 7.0 | 46 | 0.68 | 0.69 | 0.032 |

293 **Belvin Ruth 293'24**
FEMALE #2366753 FEBRUARY 11 2024 BA 293M PEN

Sitz Resilient 10208

SHAW CALDWELL 11432

Tehama Mary Blackbird D094

Montana Octane 6121

BELVIN ELLEN 194'20

J Square S Ellen 506C

Sitz Stellar 726D

Sitz Miss Burgess 1856

Tehama Upward Y238

Tehama Mary Blackbird Y684

JMB Traction 292

K C F Miss Absolute A198

Soo Line Motive 9016

Northern View Ruth 82Z

Ruth 293'24 is a feature heifer out of Caldwell. The Caldwell daughters are the largest sire group in our replacement pen, and they are good footed, deep ribbed heifers with a feminine look. The maternal grandam of 293'24 was purchased from J Square S Angus at Agribition in 2015, and she has been a front-end cow for years now, and one who is likely to be a donor before she goes. There's a lot of maternal strength in this feature heifer.

336 **Belvin Lady Blossom 336'24**
FEMALE #2367745 MARCH 28 2024 BA 336M PEN

S S Niagara Z29

RIVERBEND EVEREST H1231

Riverbend Rita D1008

SAC Conversation

BELVIN LADY BLOSSOM 10'18

Belvin Lady Blossom 3'16

Hoover Dam

Jet S S X144

V A R Generation 2100

Riverbend Rita B1156

Silveiras Conversion 8064

Laflins Farrah 0250

HF Junction 18B

Belvin Lady Blossom 44'14

Maybe the most eye appealing heifer in the group, Lady Blossom 336'24 is an extremely proud made Everest daughter who has extra volume and bone. The dam of 336'24 was herself a featured "Choice Lot" in our 2019 40th Anniversary Female Sale. 336'24 is just a late March born heifer, who still has the performance to run with any.



Lady Blossom 10'18 DAM



BA 336M

| BW | ADJ 205 | ADJ 365 | BW | WW | YW | MK | CED | CEM | CW | MARB | REA | FT |
|----|------------|------------|-----|----|-----|----|------|-----|----|------|------|-------|
| 94 | 682 | | 5.2 | 70 | 121 | 25 | -3.0 | 0.0 | 51 | 0.59 | 0.95 | 0.015 |

VOLUME BUYERS *East & West Ranching Co. Ltd (15 bulls)*



BELVIN LEMIEUX 3011 *Woodhill Revival*
Ho28 son out of Belvin Lady Blossom
9'19 (Baldrige Mercenary D002) to
Parkview Farms, Falun, AB for \$25,000



BELVIN LEXUS 3179 *Woodhill Revival*
Ho28 son out of Belvin Blackbird 65'21
(Baldrige Vegas G082) to Ferme Jean-
Francois Leblond, Armagh, QC for \$25,000



BELVIN LINE OF FIRE 3289 *Woodhill*
Revival Ho28 son out of Belvin Georgina
164'18 (Baldrige Discovery D121) to
YV Ranch, Airdrie, AB for \$24,000



BELVIN LITHIUM 3020 *Woodhill Revival*
Ho28 son out of Belvin Lady Blossom
130'19 (Musgrave Sky High 1535) to Ferme
Gagnon Inc., Cheneville, QC for \$20,000



BELVIN LOAN SHARK 3027 *Woodhill*
Revival Ho28 son out of Belvin Queen
37'19 (Baldrige Mercenary D002)
to Lucky Springs Farms, Rocky
Mountain House, AB, for \$20,000



BELVIN LIMIT UP 3066 *Hart Limit Up*
0506 son out of Belvin Lady Blossom
124'21 (Sitz Major 707F) to Lonestar
Angus, Sylvan Lake, AB for \$18,000



BELVIN LAWLESS 3236 *Woodhill Revival*
Ho28 son out of Belvin 3E Black Angel 133'18
(BC Lookout 7024) to East & West Ranching
Co. Ltd., Manyberries, AB, for \$17,000



BELVIN ROLL CALL 3036 *Brooking Roll Call*
9045 son out of Belvin Emblynette 89'18
(HF Junction 18B) to East & West Ranching
Co. Ltd., Manyberries, AB, for \$17,000



BELVIN LIMESTONE 3167 *Hart Limit*
Up 0506 son out of Belvin Lady
Blossom 209'21 (Baldrige Discovery
D121) to East & West Ranching Co.
Ltd., Manyberries, AB for \$17,000



BELVIN KING CITY 2412 *Woodhill Revival*
Ho28 son out of Belvin Emblynette
21'17 (Belvin Velasquez 203'11) to Elkinsk
Ranch, Cawston, BC for \$16,000



BELVIN LINKS 3172 *Brooking Roll Call* 9045
son out of Belvin Georgina 172'19 (Baldrige
Discovery D121) to East & West Ranching
Co. Ltd., Manyberries, AB for \$15,000



BELVIN LAPOINTE 3124 *Woodhill Revival*
Ho28 son out of Belvin Georgina 253'20
(Poss Maverick) to Leedale Farming
Co. Ltd., Rimbey, AB for \$15,000

BA



BELVIN LADY BLOSSOM 26'23 *Brooking Roll Call 9045 daughter out of Belvin Lady Blossom 63'17 (S A V Bismarck 5682) to Luis Pacheco, Mexico, for \$27,000*



BELVIN ANDRIA 25'23 *Square B Atlantis daughter out of Belvin Andria 48'15 (Wiwa Creek Monarch 248'12) to El Sauz Angus, Mexico, for \$25,000*

high sellers in 2024



BELVIN QUEEN 18'23 *Brooking Roll Call 9045 daughter out of Belvin Queen 824'18 (HF Junction 18B) to Coul Angus, Scotland, for \$17,000*





Driving the science of better breeding

There's little room for error in the cattle business. Producers need the most advanced information to make smart selection decisions, and Angus Genetics Inc. (AGI) provides it through genomic-enhanced expected progeny differences (GE-EPDs).

GE-EPDs have become the industry standard for herd improvement, building on decades of science-backed genetic evaluation tools originated and maintained through the American Angus Association*, home to the largest and ever-growing single-breed beef cattle database.

EPDs that traditionally contained all pedigree, performance and progeny information now also include results from available genomic, or DNA, tests. Breeders who use genomic technology give buyers access to AGI-generated GE-EPDs that provide:

Increased predictability and decreased risk for young and unproven animals due to enhanced accuracy of EPDs

Better characterization of genetics for difficult-to-measure performance traits (such as carcass traits, maternal traits and feed efficiency)

The ability to make more rapid progress for traits that are important to you, due to:

- more accurate selection
- easier identification of genetic outliers
- the ability to propagate young animals with confidence earlier in their lives

In fact, GE-EPDs on unproven animals have the same amount of accuracy as if they had recorded 10-36 calves, depending on the trait. That's valuable insight, offered regularly through the breed's weekly national cattle evaluation.

| Trait | Progeny Equivalent | Trait | Progeny Equivalent |
|-----------------------|--------------------|-----------------------|--------------------|
| Calving Ease Direct | 26 | Heifer Pregnancy | 17 |
| Birth Weight | 23 | Calving Ease Maternal | 20 |
| Weaning Weight | 27 | Milk | 36 |
| Yearling Weight | 23 | Mature Weight | 15 |
| Dry Matter Intake | 12 | Mature Height | 9 |
| Scrotal Circumference | 15 | Carcass Weight | 15 |
| Docility | 12 | Yearling Height | 17 |
| Claw Set | 10 | Carcass Marbling | 11 |
| Foot Angle | 10 | Carcass Ribeye | 17 |
| | | Carcass Fat | 14 |

How do you know if EPDs are genomic-enhanced?

Ask your breeder, refer to the registration paper, or look for the AGI GE-EPD logo, Angus GS™ powered by partner Neogen GeneSeek or the HD50k by partner Zoetis. These images indicate animals for which low-density or high-density genomic testing has been conducted and incorporated by AGI into GE-EPDs



www.angus.org

MATERNAL FUNCTION AND CARCASS MERIT.

THE PERFECT PAIR.



Marbling is the No. 1 reason cattle don't make the *Certified Angus Beef®* brand.
Achieve top maternal performance in tandem with improved carcass traits.

CABcattle.com

BA thursday october 30

THE BELVIN ANGUS & GUESTS
F E M A L E S A L E



yukon

WOODHILL YUKON L033 [CAA# 2376645]

Woodhill Yukon L033 was selected as the \$42,500 High Selling Bull at the 2024 Woodhill Farms Bull Sale. Yukon is a unique individual. Phenotypically he is attractive made and stout, with extra volume, a nice head and good scrotal. Genotypically, he is a bull who is negative for birth, while still having strong performance and an amazing 1.59 marbling EPD, ranking in the top 1% of the breed. Yukon's combination of phenotype and carcass merit is hard to come by.



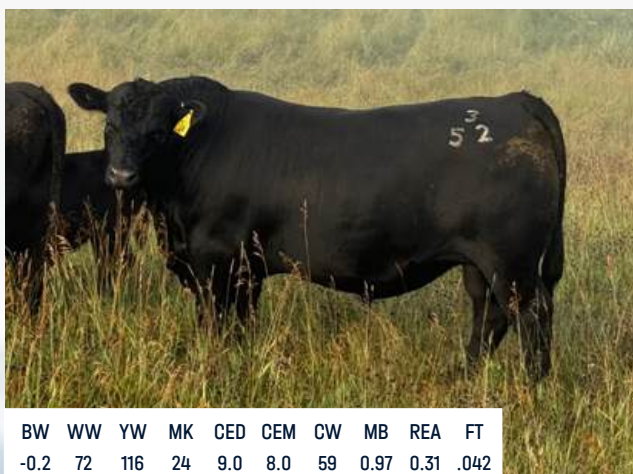
| BW | WW | YW | MK | CED | CEM | CW | MB | REA | FT |
|------|----|-----|----|-----|------|----|------|------|------|
| -0.3 | 68 | 127 | 35 | 9.0 | 11.0 | 42 | 1.59 | 0.21 | .061 |

apex

SR SOUTH APEX 352 [CAA# 2376645]

SR South Apex 352 was selected as one of the features from the 2024 Spickler South Bull Sale. Apex is an exciting son of the popular S Architect 9501, while his dam is a potent daughter of the great SAV Net Worth 4200, who stems from the legendary Everelda Entense cow family at Sitz. Apex is a long sided, stout hipped bull with added bone and great feet, with an awesome combination of calving ease, performance, maternal strength and carcass merit.

The dam of SR South Apex 352 is pictured below.



| BW | WW | YW | MK | CED | CEM | CW | MB | REA | FT |
|------|----|-----|----|-----|-----|----|------|------|------|
| -0.2 | 72 | 116 | 24 | 9.0 | 8.0 | 59 | 0.97 | 0.31 | .042 |

upcoming sires





BA thank you
for your SUPPORT OF OUR PROGRAM





Return undelivered mail to:
Belvin Angus, P.O. Box 6134,
Innisfail, Alberta T4G 1S8
www.belvinangus.com